

RELEASE NOTES

PACE Suite 6.4



Table of Contents

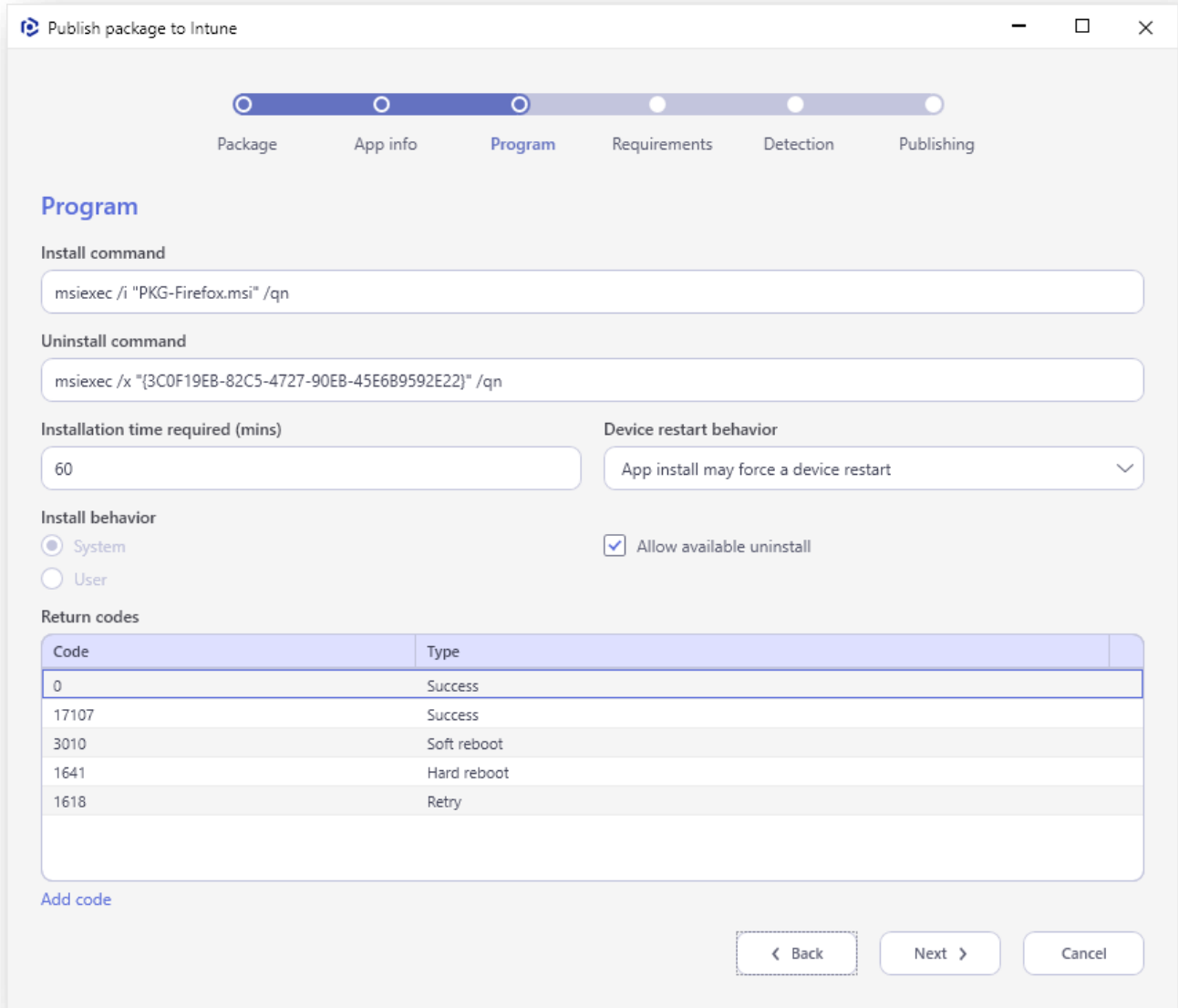
1	About This Release.....	3
1.1	Integration with Intune	4
1.2	IntelliSense for PSADT	5
1.3	MSIX Bundles.....	6
1.4	MSIX App Attach	7
1.5	Improvements and Fixes	8
2	Release History.....	8

1 About This Release

This release of PACE Suite includes:

- **Integration with Intune**
For details, see section 1.1
- **IntelliSense for PSADT**
For details, see section 1.2
- **MSIX Bundles**
For details, see section 1.3
- **MSIX App Attach**
For details, see section 1.4
- **Improvements and Fixes**
For details, see section 1.5

1.1 Integration with Intune



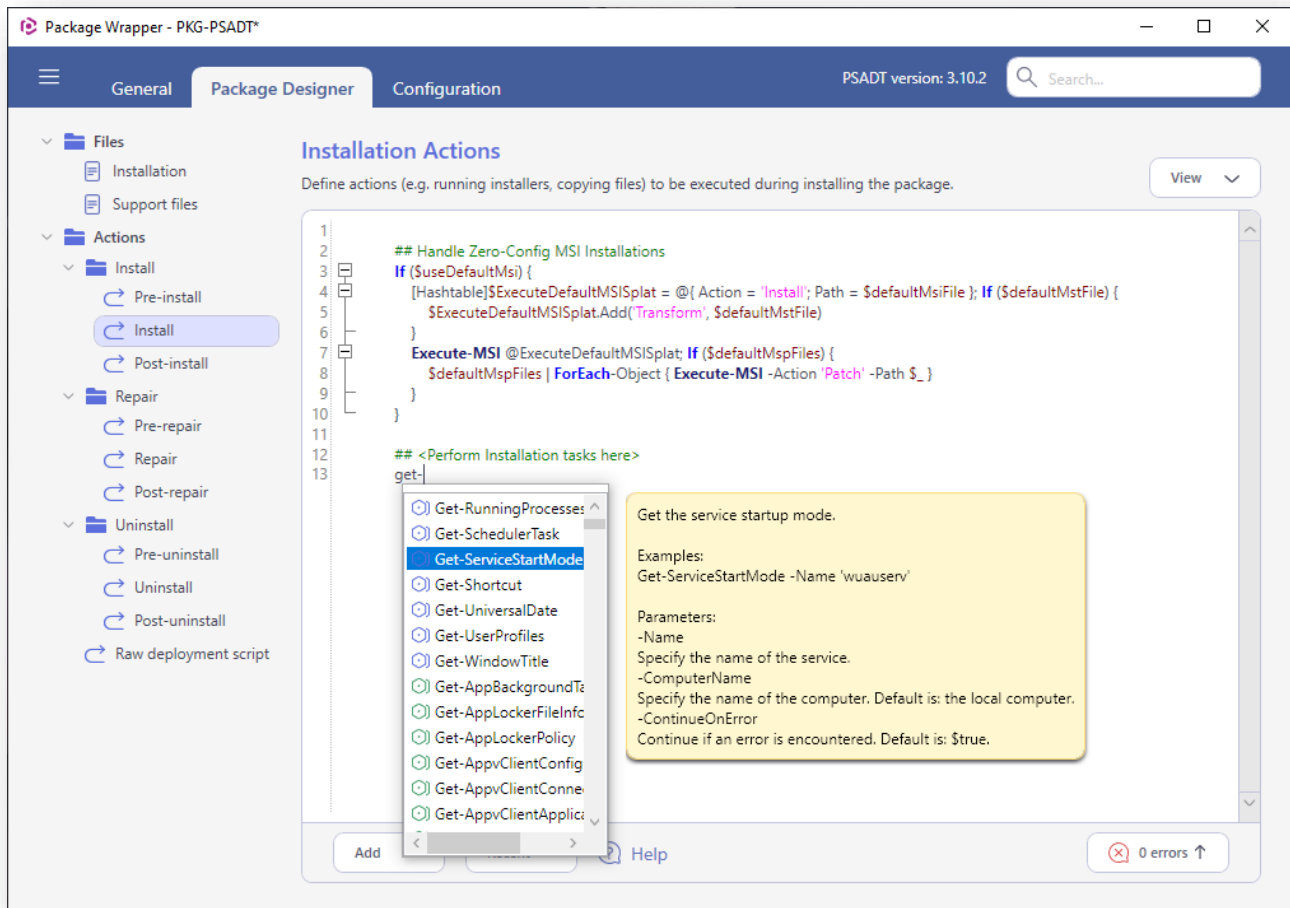
We are excited to announce the integration of PACE Suite with **Microsoft Intune** - a leading cloud-based endpoint management solution. This new feature enables seamless and quick filling of your Intune catalog with the applications.

Publish the prepared MSI, MSIX, APPX, or INTUNEWIN packages directly from PACE Suite to Intune. The publishing wizard is tailored for each supported package type. Most of the settings will be determined automatically based on the values of the selected package.

If your application comes in a package type that MS Intune doesn't support, take advantage of the PACE Suite wizard to wrap any installation into INTUNEWIN format.

How to Get Started: (1) run **PACE Suite Launcher**; (2) select 'Packager Tasks > Prepare for Deployment > Others > Publish to Intune'.

1.2 IntelliSense for PSADT



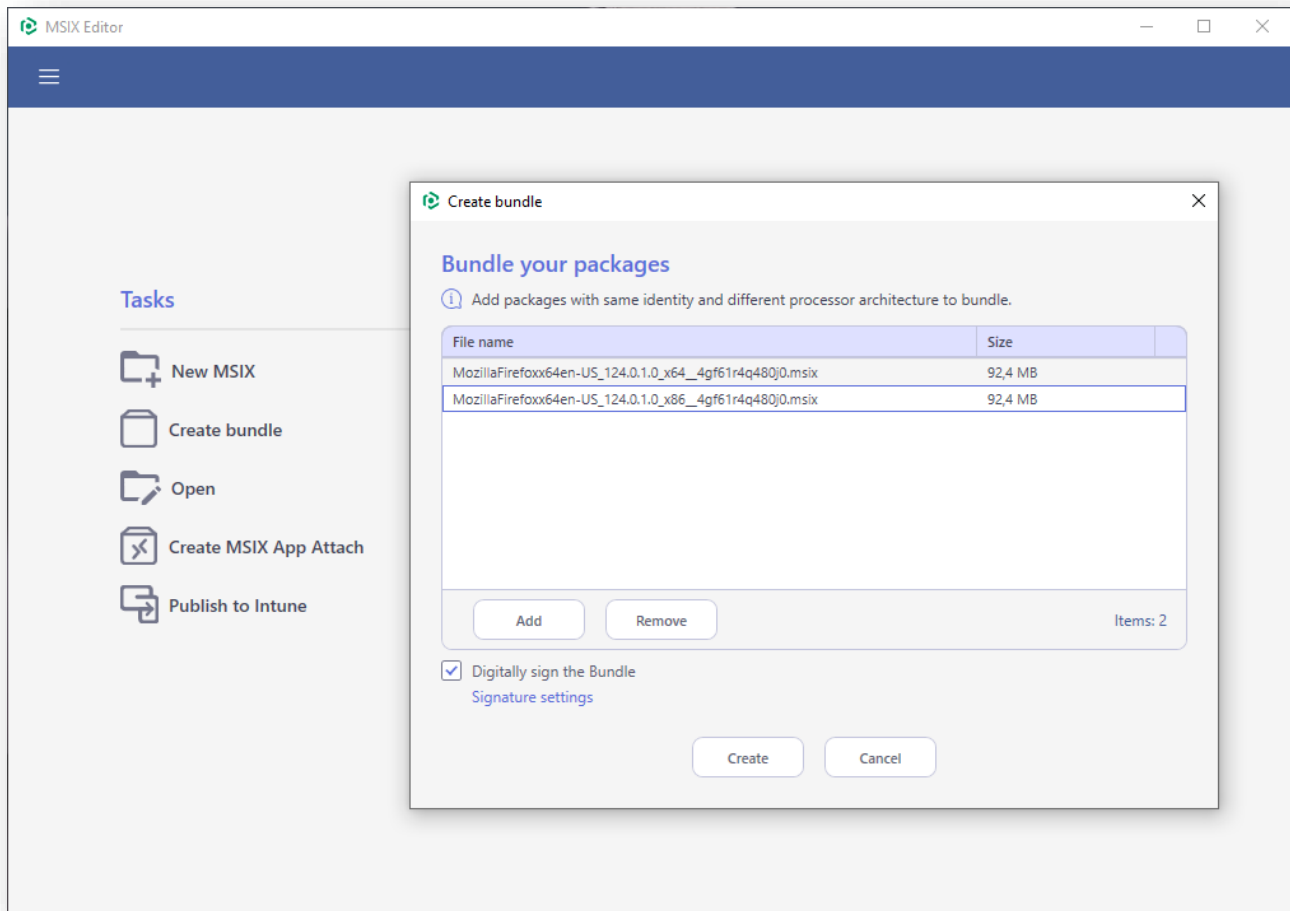
Welcome the **IntelliSense** feature for editing PSADT (PowerShell App Deployment Toolkit) scripts in PACE Suite - Package Wrapper. This enhancement brings a new level of productivity and ease of use to your script-writing process by providing real-time code suggestions, documentation, and syntax guidance as you work with PSADT scripts.

Features:

- **Real-time Syntax Suggestions:** As you type your PSADT script, the editor will automatically suggest command names (PSADT and common PowerShell commands), variables, and command parameters, helping you write scripts faster and with fewer errors.
- **Integrated Documentation:** Access context-sensitive documentation directly within the editor. IntelliSense will display detailed descriptions, parameter definitions, and usage examples for PSADT and PowerShell commands.

How to Get Started: (1) open the PSADT project in **Package Wrapper**; (2) navigate to 'Package Designer > Actions > (required action section)'; (3) start typing the command name (ex. "get-") or variable (ex. "\$").

1.3 MSIX Bundles



We are happy to announce a highly requested feature for MSIX Editor: **Support for creating and opening MSIX bundles**. This enhancement allows users to seamlessly manage MSIX bundles alongside traditional MSIX packages, streamlining your workflow when dealing with multiple app packages for different architectures and configurations.

Features:

- **Create Bundle**

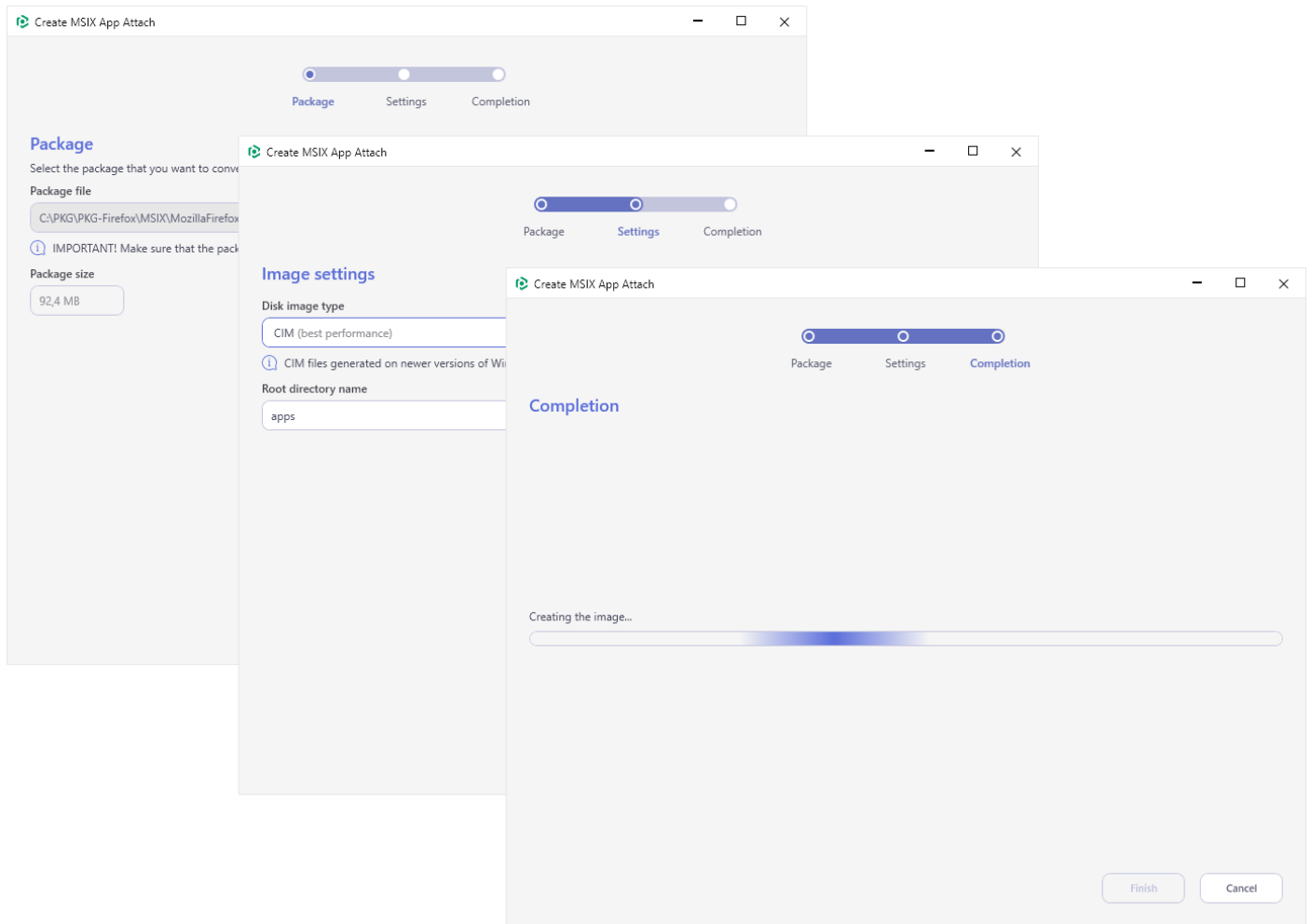
In addition to building MSIX/APPX bundles from the capturing project in Package Generator, in the new version of MSIX Editor, you can easily associate multiple existing MSIX/APPX packages for different architectures (x86, x64, ARM, etc.) into a single MSIX/APPX Bundle file.

- **Open Bundle**

MSIX Editor now supports opening MSIX/APPX bundles. Editing individual packages within a bundle is made easy. There's no need to manually unpack the bundle first, just open it with MSIX Editor and select one of its packages that you want to view or edit.

How to Get Started: (1) run MSIX Editor; (2) click **Create bundle** / **Open** at home screen.

1.4 MSIX App Attach



In this release, we also added the support for creating **MSIX App Attach** images. This feature allows you to convert an existing MSIX package into MSIX App Attach format, enabling virtualized applications to be dynamically attached to Windows environments without requiring traditional installation. This integration helps streamline app delivery and the simplifies management of apps in virtualized or cloud environments.

An easy-to-follow wizard for creating MSIX App Attach images checks the package digital signature and allows defining the output image configuration.

How to Get Started: (1) run **PACE Suite Launcher**; (2) select 'Packager Tasks > Prepare for Deployment > MSIX/APPX > Create MSIX App Attach'.

1.5 Improvements and Fixes

- Added a validator that automatically checks if the opened MSI package contains Custom Actions with VBScript and informs the user. Note that VBScript will be retired and eliminated from future versions of Windows.
- Fixed a sporadic issue with Setup Capture that would cause it to freeze and then fail.
- Improved the structure of the '**Prepare for Deployment**' tasks in the Launcher.
- Improved functionality of inserting a new PS command to the PSADT script in the Package Wrapper. The user is now asked which example to insert.
- Improved UI/UX of the 'Create IntuneWin package' wizard.
- Fixed an issue of displaying the incorrect content in the Launcher when not the first tab was left open for a long time.
- When building MSI packages in Package Generator, it will first check and notify the user in advance if the project contains files >2GB in size that Windows Installer doesn't support.
- Fixed an issue with displaying field names in the Launcher settings window.

Also includes fixes from the minor 6.3.1 update:

- Fixed registry access errors in some cases in MSIX.
- Fixed interaction with Windows Sandbox on non-English OS versions.
- Fixed issue with editing profiles of Package Generator if several profiles are added.
- Fixed error in configuring the 'remove folder/file' operation in MSI Editor.
- Fixed issue with extracting COM information on file import in MSI Editor.
- Fixed several minor issues and UI bugs.

2 Release History

- [PACE Suite 6.3](#)
- [PACE Suite 6.2](#)
- [PACE Suite 6.1](#)
- [PACE Suite 6.0](#)
- [PACE Suite 5.8](#)
- [PACE Suite 5.7](#)
- [PACE Suite 5.6](#)
- [PACE Suite 5.5](#)
- [PACE Suite 5.4](#)
- [PACE Suite 5.3](#)

Release Notes

PACE Suite 6.4

- [PACE Suite 5.2](#)
- [PACE Suite 5.1](#)
- [PACE Suite 5.0](#)
- [PACE Suite 4.7](#)
- [PACE Suite 4.6](#)
- [PACE Suite 4.5](#)
- [PACE Suite 4.4](#)
- [PACE Suite 4.3](#)
- [PACE Suite 4.2](#)
- [PACE Suite 4.1](#)
- [PACE Suite 4.0](#)
- [PACE Suite 3.5.5](#)
- [PACE Suite 3.5](#)
- [PACE Suite 3.4.2](#)
- [PACE Suite 3.4.1](#)
- [PACE Suite 3.4](#)
- [PACE Suite 3.3 – 3.3.1](#)