

---

# RELEASE NOTES

---

PACE Suite 6.3



# Table of Contents

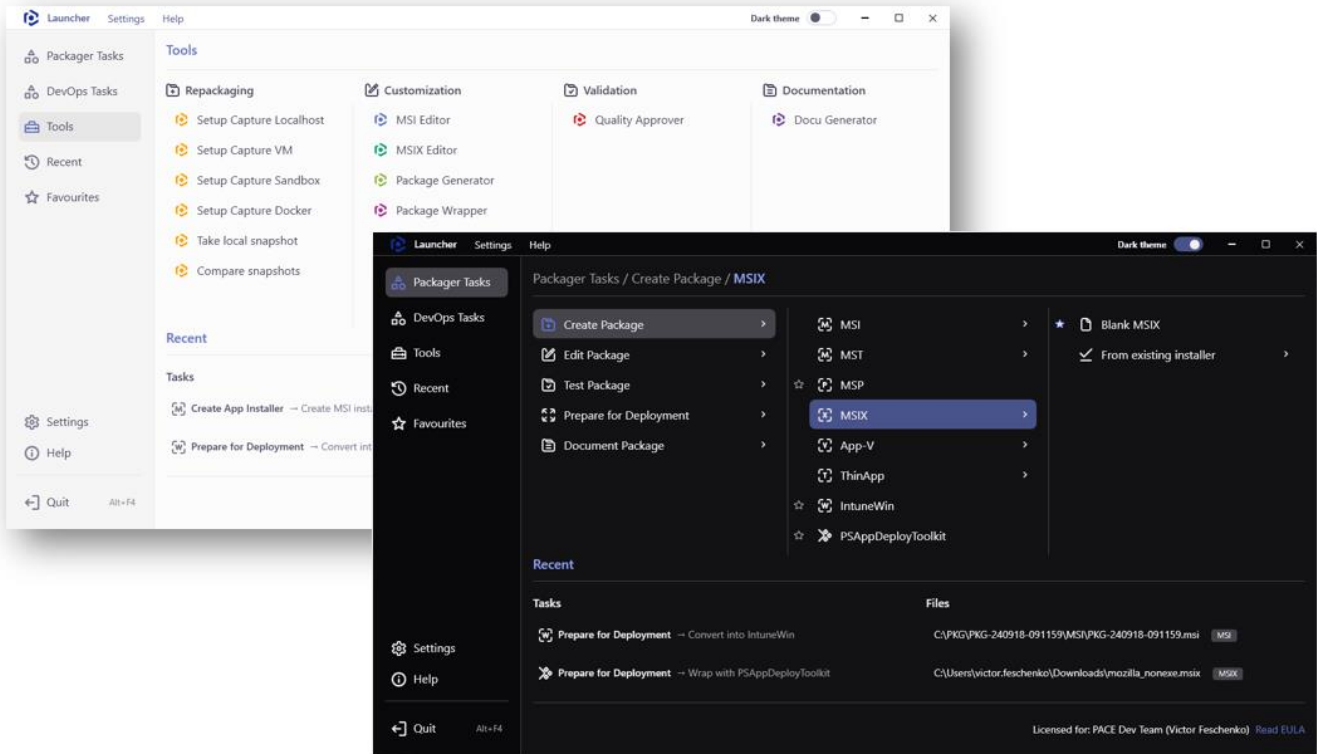
1	About This Release .....	3
1.1	New Launcher .....	4
1.2	Support of Services in MSIX .....	5
1.3	Support of New MSIX Fixups .....	6
1.4	Quick Conversion of MSI to MSIX .....	8
1.5	Quick Conversion of APPV to MSIX.....	9
1.6	New Home Screen.....	10
1.7	Integration into Win11 Context Menu.....	10
1.8	Improvements and Fixes .....	11
2	Release History.....	12

# 1 About This Release

This release of PACE Suite includes:

- **New Launcher**  
*For details, see section 1.1*
- **Support of Services in MSIX**  
*For details, see section 1.2*
- **Support of New MSIX Fixups**  
*For details, see section 1.3*
- **Quick Conversion of MSI to MSIX**  
*For details, see section 1.4*
- **Quick Conversion of APPV to MSIX**  
*For details, see section 1.5*
- **New Home Screen**  
*For details, see section 1.6*
- **Integration into Win11 Context Menu**  
*For details, see section 1.7*
- **Improvements and Fixes**  
*For details, see section 1.8*

# 1.1 New Launcher

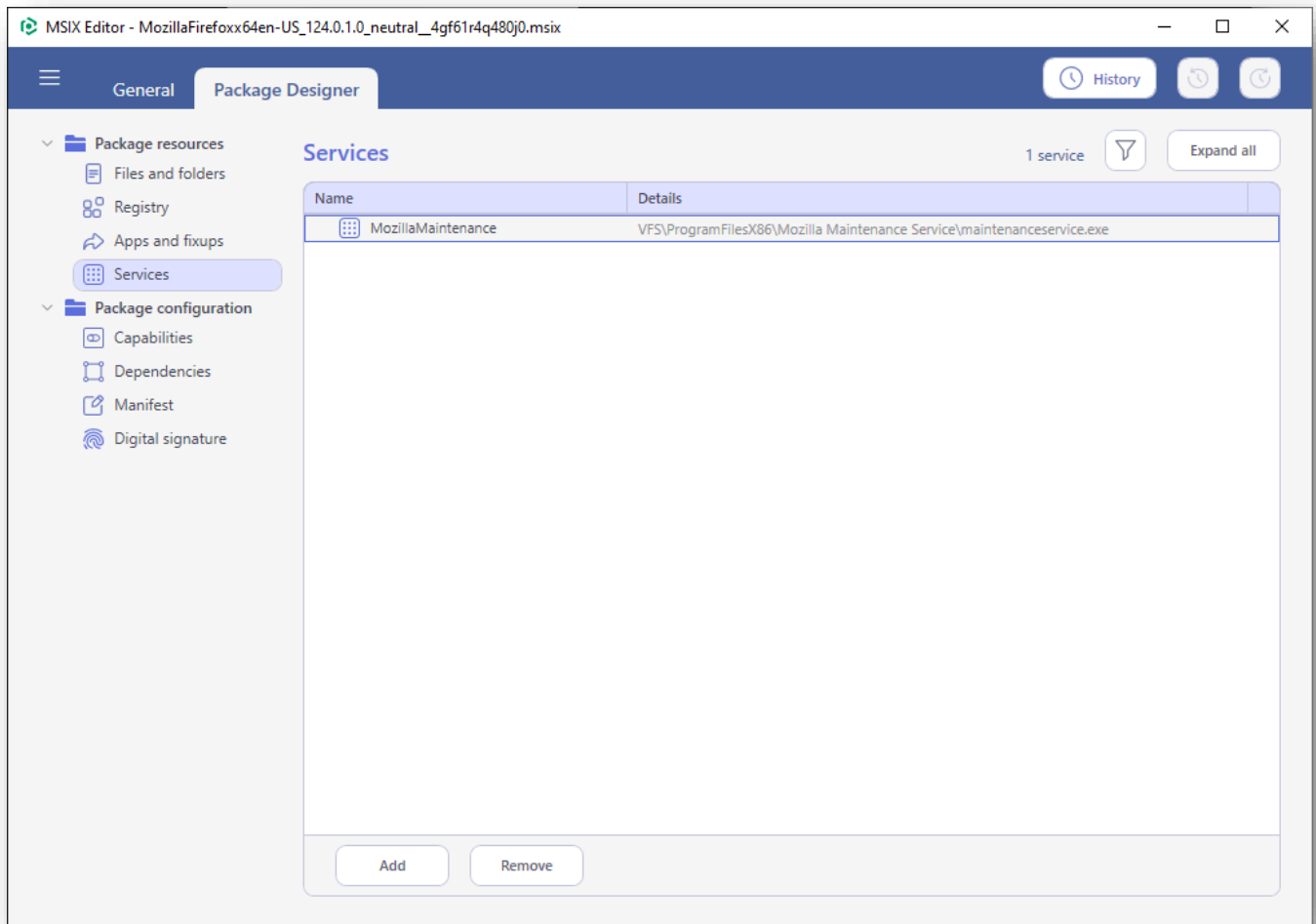


PACE Suite is growing with the new features and new modules, and to make it easier to find the necessary functions, we have developed a new PACE Suite Launcher.

## Highlights:

- Better navigation with a more thought-out structure and better grouping of tasks.
- Light and dark themes.
- Recent lists of the invoked tasks and opened files.
- Customization of the list of favourites tasks.

## 1.2 Support of Services in MSIX

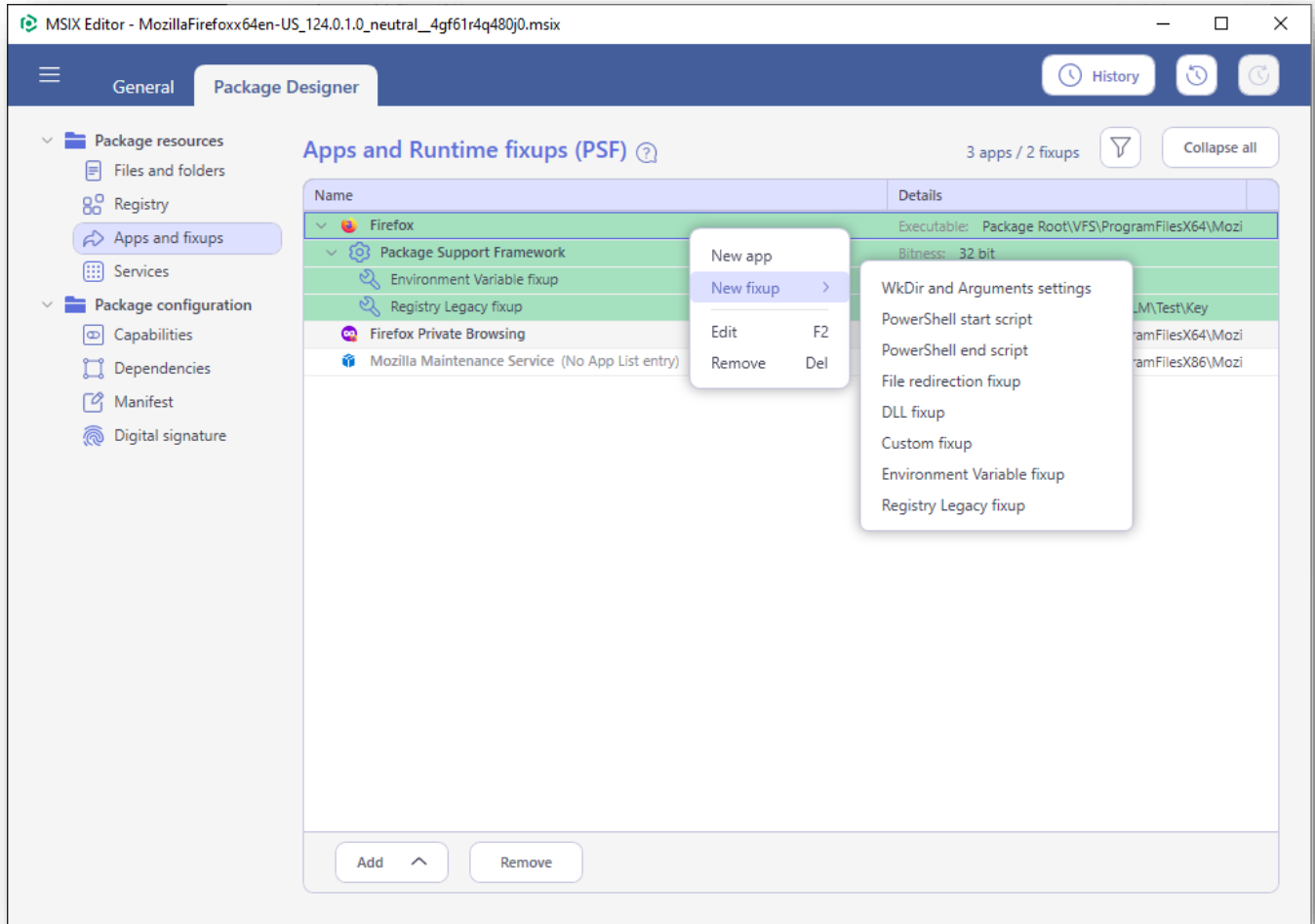


We have added support for the Windows Services in MSIX packages.

### Highlights:

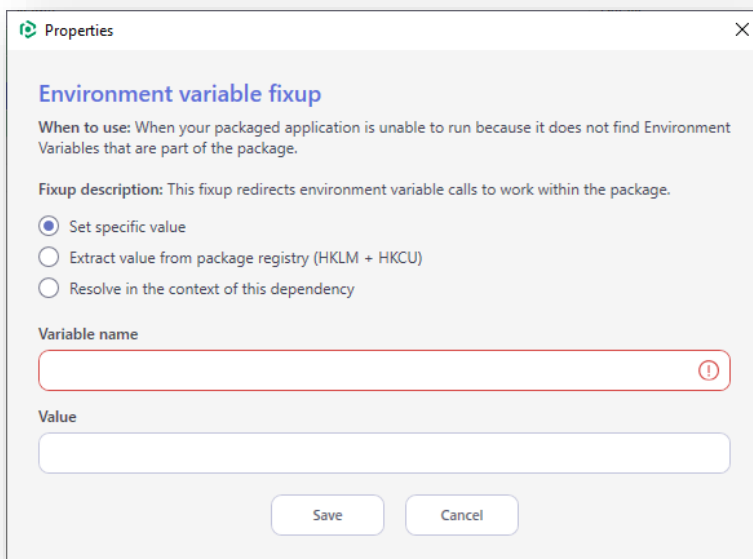
- Save Services to the manifest when building an MSIX package in Package Generator.
- View and edit Services of the opened package MSIX Editor.
- Track changes easily with the highlighting rules and Undo-Redo history.

# 1.3 Support of New MSIX Fixups



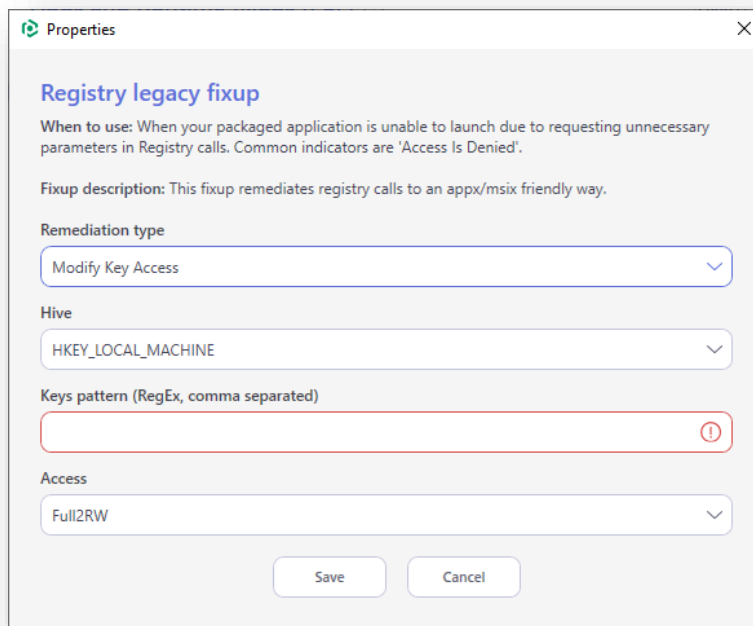
In this release we have extended the [Package Support Framework](#) Fixups list that you can utilize in MSIX packages. The support for the following new Fixups were added in MSIX Editor and Package Generator:

- Environment Variable Fixup



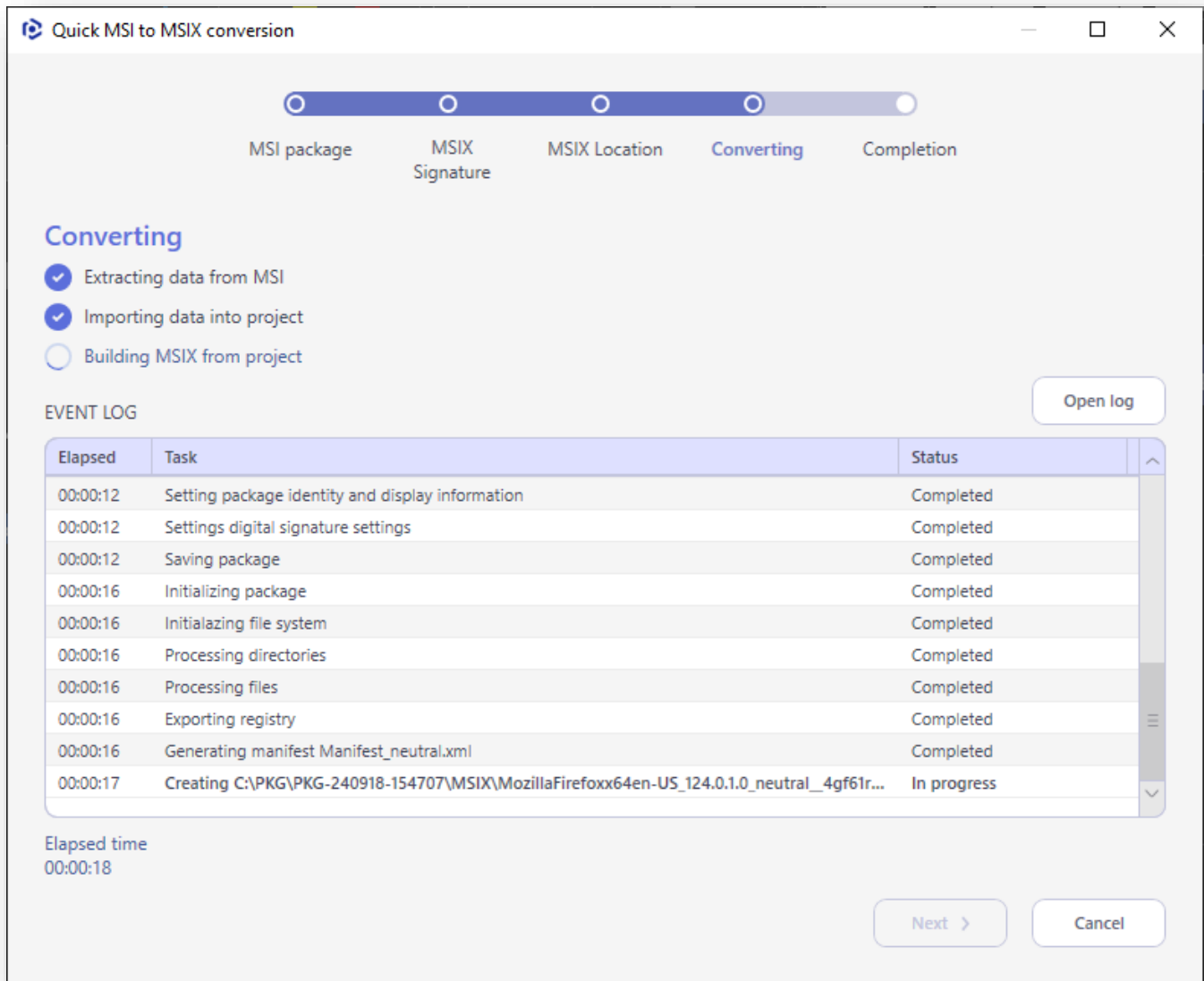
If your packaged application is unable to run because it does not find Environment Variables, now you can set it with the help of this Fixup.

- Registry Legacy Fixup



This Fixup will help to run your packaged application if it fails with the 'Access Is Denied' error due to requesting unnecessary parameters in Registry calls.

## 1.4 Quick Conversion of MSI to MSIX



Meet the quick conversion of MSI package to MSIX format with no need of manual repackaging. It takes about 1 minute to convert average-size MSI packages.

Quick convert has three stages:

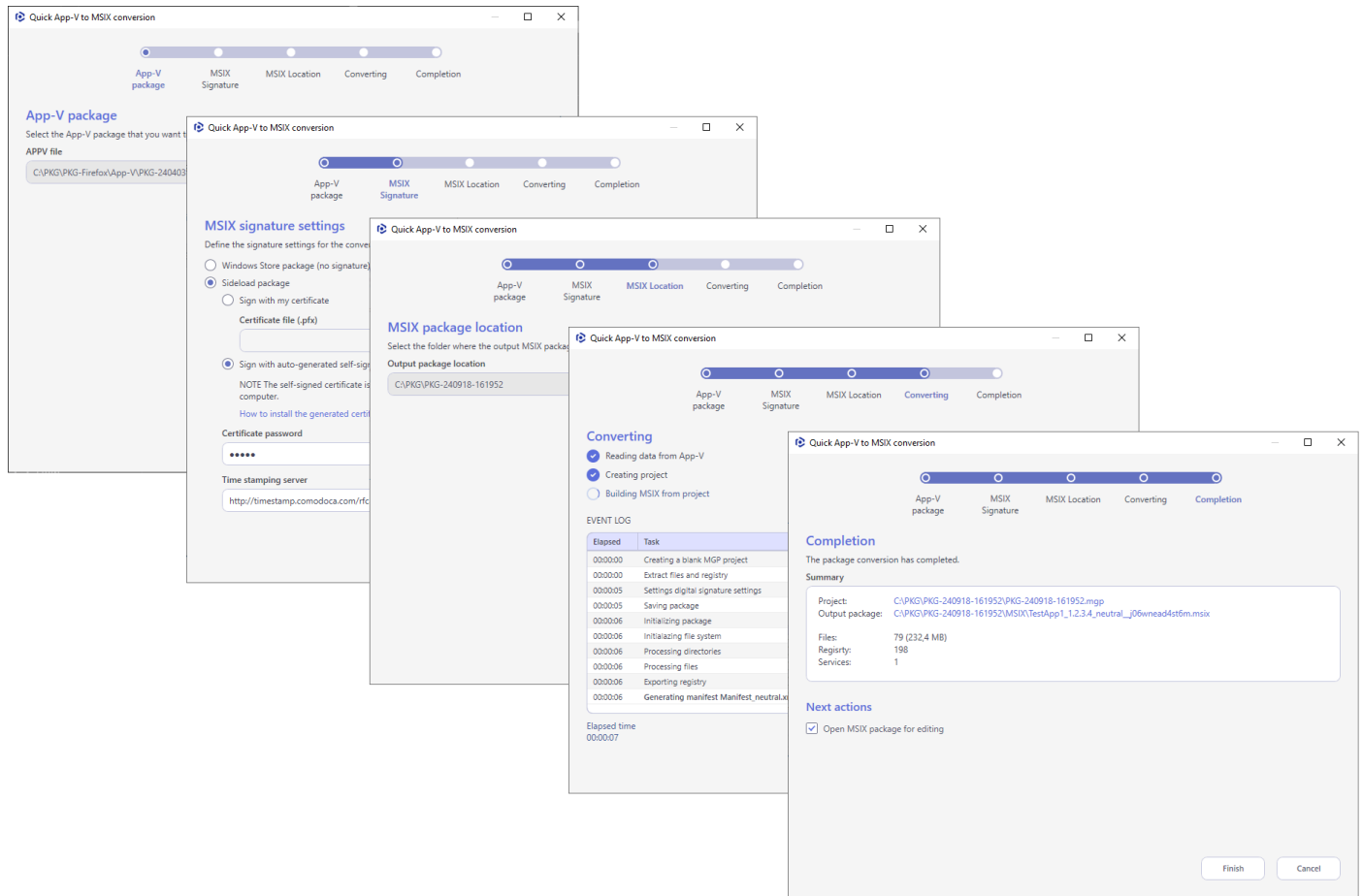
- (1) extracts files, registry, shortcuts, COM objects from the selected MSI package;
- (2) creates the Package Generator's project and imports all these resources to it;
- (3) builds the MSIX package from this project.

This approach allows you to open the project at any time, apply the required changes and build a new version of the package.

Note that the quick convert cannot detect the business logic of MSI custom actions on the fly, and this part of the MSI package won't be reproduced in the MSIX package.

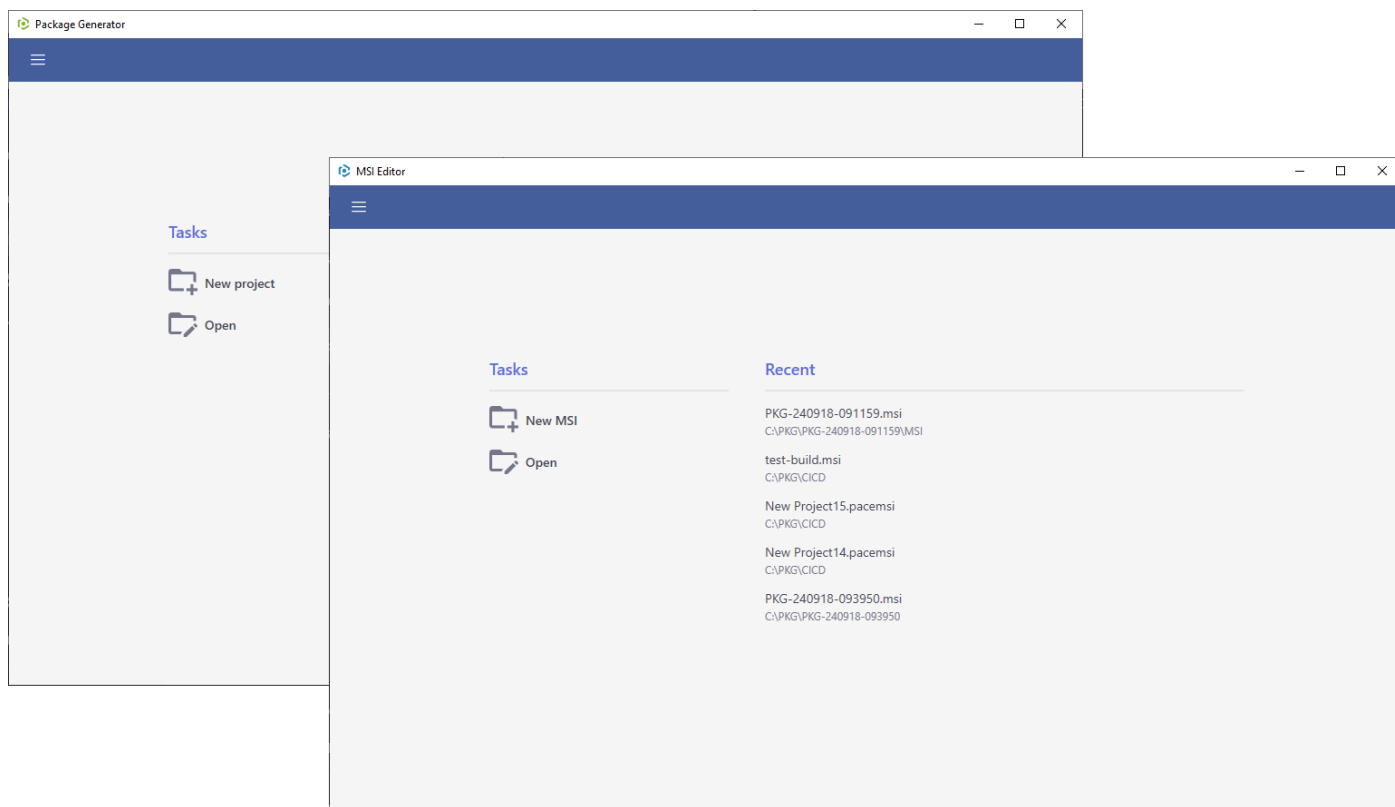


# 1.5 Quick Conversion of APPV to MSIX



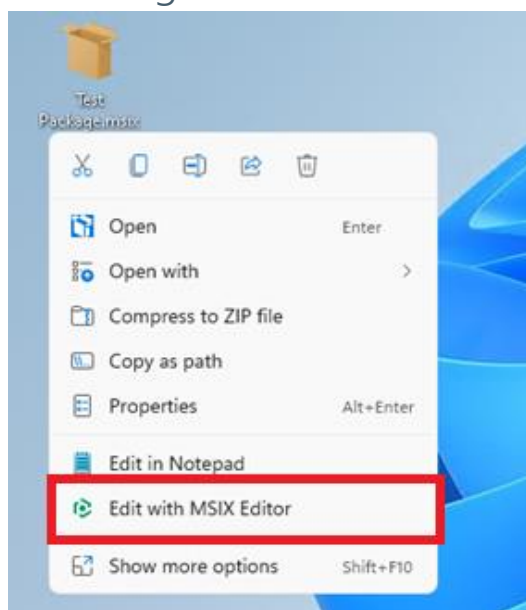
Microsoft’s App-V will officially reach end of life in 2026. To smoothly migrate from App-V to MSIX, we developed a wizard for the quick package conversion. Files, registry, applications, file type associations, and protocols will be automatically converted to App-V with no additional efforts.

## 1.6 New Home Screen



We have added the new home screen to MSI Editor and Package Generator to allow you to quickly start working with the recent file or find the New/Open function.

## 1.7 Integration into Win11 Context Menu



We have integrated PACE Suite tools into the modern context menu of Windows 11 so that you can easily find the Edit functions for all of the associated file extensions like \*.msix, \*.appx, \*.msi, \*.mst, etc.

## 1.8 Improvements and Fixes

- Improved parsing of FTA and Protocols from the registry and saving to MSIX manifest while building a package.
- Extended the folder mapping rules when building MSIX from the captured project in Package Generator.
- Fixed validation for the Publisher field in MSIX Editor.
- Added synchronization of MSIX Fixups for Apps, which points to the same executable.
- Added conversion of file/folder paths in registry to MSIX format when building MSIX in Package Generator.
- Improved validation for MSIX app parameters in Package Generator.
- Change behaviour of processing registry when building MSIX package, so that empty system registry keys are skipped.
- Fixed issues with displaying MSIX package and app logo images in MSIX Editor.
- Added automatic creation of a folder in MSIX if it was set as a working directory in fixup.
- Updated Package Support Framework and Fixups libraries.
- Disabled auto selection of Application Root Folder for MSIX packages.
- Improved UI and UX for managing PowerShell Fixup in Package Generator.
- Reorganized tree of MSIX Fixups and context menu in Package Generator.
- Fixed row references for dialog-specific MSI tables.
- Fixed validation in INI file editor.
- Fixed some sporadic crashes.
- Improved UX of new blank MSI package creation in MSI Editor.
- Reorganized the project folder structure of the Package Generator.
- Fixed validation for Windows Service name in MSI Editor.
- Updated MSI templates in Package Generator and MSI Editor.
- Fixed the issue when the portable version of Local Setup Capture has stopped abnormally.
- Fixed invalid identifiers creation for the newly selected images in installation dialogs.
- Fixed the issue with proper displaying Dialogs tree after modifying conditions of published events.
- Fixed the issue with the generation of new GUIDs for components when building MSI from the PACEMSI project.
- Fixed the harvesting INI files, which are explicitly defined as binary files, during building MSI from the PACEMSI project.

## 2 Release History

- [PACE Suite 6.2](#)
- [PACE Suite 6.1](#)
- [PACE Suite 6.0](#)
- [PACE Suite 5.8](#)
- [PACE Suite 5.7](#)
- [PACE Suite 5.6](#)
- [PACE Suite 5.5](#)
- [PACE Suite 5.4](#)
- [PACE Suite 5.3](#)
- [PACE Suite 5.2](#)
- [PACE Suite 5.1](#)
- [PACE Suite 5.0](#)
- [PACE Suite 4.7](#)
- [PACE Suite 4.6](#)
- [PACE Suite 4.5](#)
- [PACE Suite 4.4](#)
- [PACE Suite 4.3](#)
- [PACE Suite 4.2](#)
- [PACE Suite 4.1](#)
- [PACE Suite 4.0](#)
- [PACE Suite 3.5.5](#)
- [PACE Suite 3.5](#)
- [PACE Suite 3.4.2](#)
- [PACE Suite 3.4.1](#)
- [PACE Suite 3.4](#)
- [PACE Suite 3.3 – 3.3.1](#)