

RELEASE NOTES

PACE Suite 6.2



Table of Contents

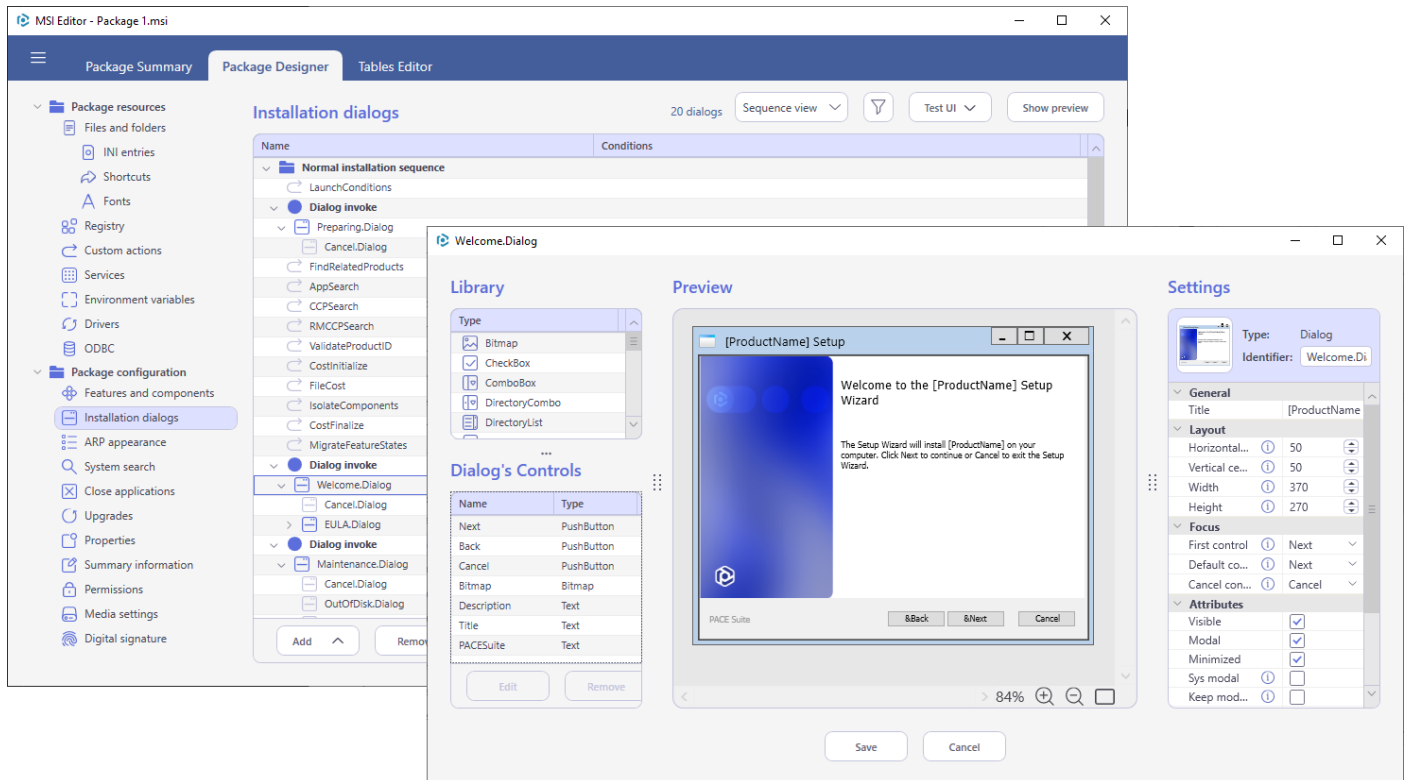
1	About This Release	3
1.1	Editor for Installation Dialogs.....	4
1.2	MSI Build in CI/CD	5
1.3	IntuneWin 30GB Limit.....	6
1.4	New MSI Templates.....	7
1.5	Improvements and Fixes	8
2	Release History.....	8

1 About This Release

This release of PACE Suite includes:

- **Editor for Installation Dialogs**
For details, see section 1.1
- **MSI Build in CI/CD**
For details, see section 1.2
- **IntuneWin 30GB Limit**
For details, see section 1.3
- **New MSI Templates**
For details, see section 1.4
- **Improvements and Fixes**
For details, see section 1.5

1.1 Editor for Installation Dialogs

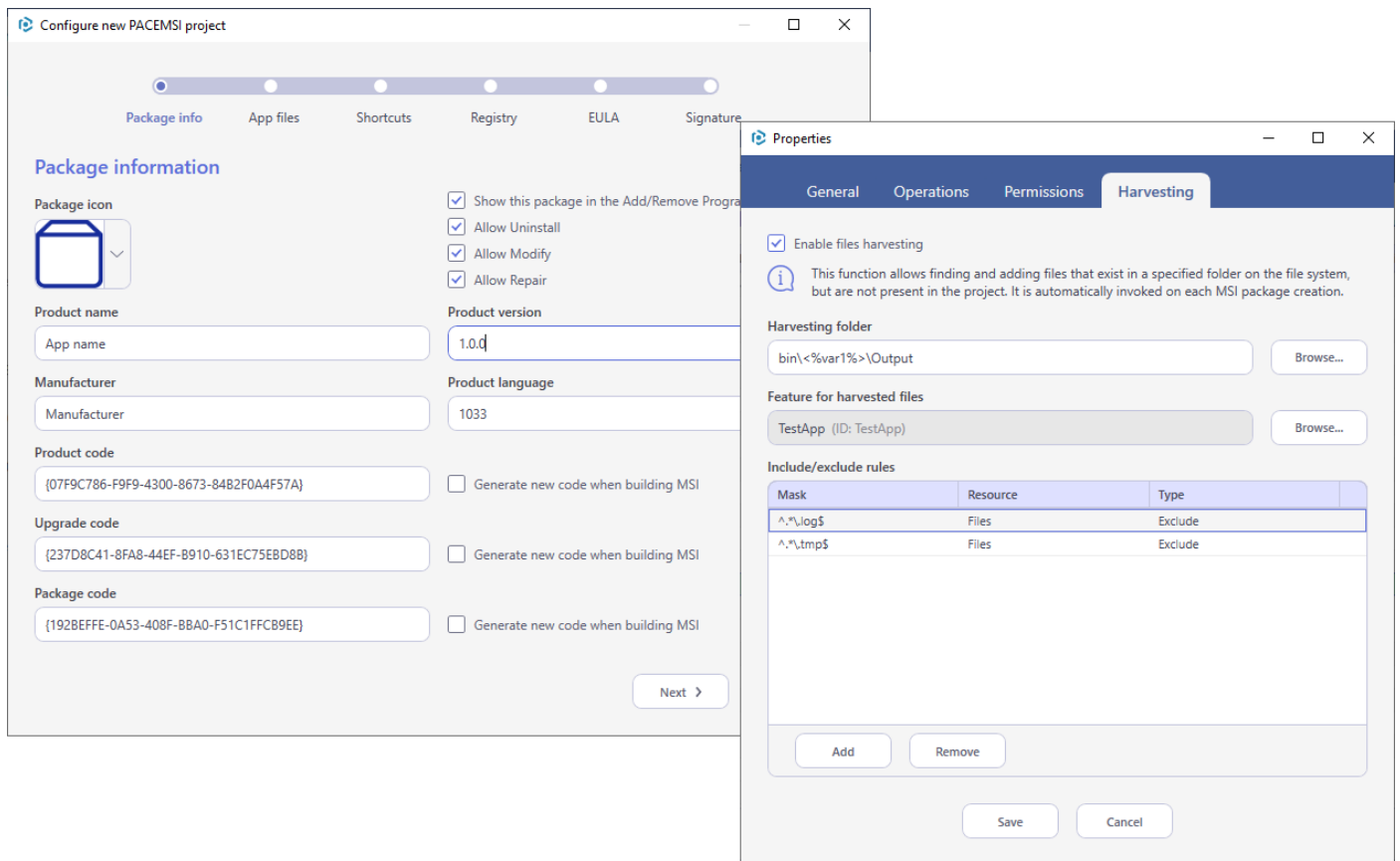


Meet the **advanced designer of installation UI** in this version of PACE Suite. With its help, you can easily review and edit dialog boxes and manage the tree of dialogs in your MSI installation.

Highlights:

- View and manage the sequence of dialog boxes of the existing package;
- Edit of dialog's controls, events, conditions;
- Add predefined dialog from the list;
- Export/import dialog to/from the file;
- Not suitable configuration options are hidden;
- Light and concise dialog design template;
- Built-in simulation of installation UI to test changes;
- Quick preview of dialog appearance directly in the list/tree of dialogs;
- Create and create dialog invokes in the Normal and Administrative installation modes.

1.2 MSI Build in CI/CD



```

C:\WINDOWS\system32\cmd.exe

C:\PKG\CICD\DEMO>"C:\Program Files (x86)\PACE Suite\MSI Editor\MsiEditor.exe" build-msi --project Demo.pacemsi --output-package "Output\Test App.msi"
--path-variable "<%var1%>=Debug" --product-version "10.10.10" --product-name "Test App 10.10.10"
Started cmd session: build-msi --project Demo.pacemsi --output-package Output\Test App.msi --path-variable <%var1%>=Debug --product-version 10.10.10 -
--product-name Test App 10.10.10.
Start executing command:Build CI package
  Start of creating MSI from project
  Start updating summary information
  Product code was generated:{4C953714-5C02-402B-ACD8-BA84D83F3D31}
  Product name was changed to:Test App 10.10.10
  Product version was changed to:10.10.10
  Finish updating summary information
  Start resolving path variables
  Finish resolving path variables
  Start coping files import path
  Finish coping files import path
  Start updating files info
  Finish updating files info
  Harvested: C:\PKG\CICD\DEMO\bin\Debug\Output\plugins\git2.dll into ProgramFiles64Folder\Infopulse\Test App\plugins\git2.dll
  Harvested: C:\PKG\CICD\DEMO\bin\Debug\Output\plugins\mimeTools.dll into ProgramFiles64Folder\Infopulse\Test App\plugins\mimeTools.dll
  Harvested: C:\PKG\CICD\DEMO\bin\Debug\Output\plugins\Plugin A.dll into ProgramFiles64Folder\Infopulse\Test App\plugins\Plugin A.dll
  Harvested: C:\PKG\CICD\DEMO\bin\Debug\Output\plugins\sqlite3.dll into ProgramFiles64Folder\Infopulse\Test App\plugins\sqlite3.dll
  Harvested: C:\PKG\CICD\DEMO\bin\Debug\Output\readme.txt into ProgramFiles64Folder\Infopulse\Test App\readme.txt
  Harvested: C:\PKG\CICD\DEMO\bin\Debug\Output\SciLexer.dll into ProgramFiles64Folder\Infopulse\Test App\SciLexer.dll
  Harvested: C:\PKG\CICD\DEMO\bin\Debug\Output\shortcuts.xml into ProgramFiles64Folder\Infopulse\Test App\shortcuts.xml
  Harvested: C:\PKG\CICD\DEMO\bin\Debug\Output\stylers.model.xml into ProgramFiles64Folder\Infopulse\Test App\stylers.model.xml
  Harvested: C:\PKG\CICD\DEMO\bin\Debug\Output\Test App.exe into ProgramFiles64Folder\Infopulse\Test App\Test App.exe
Processing files
Retrieving file details...
Updating files sequence numbers...
Compressing files to cabinets...
Adding media records...
Postprocessing files
Executing group operation
  Successfull completion of creating MSI from project
Command was executed successfully.

```

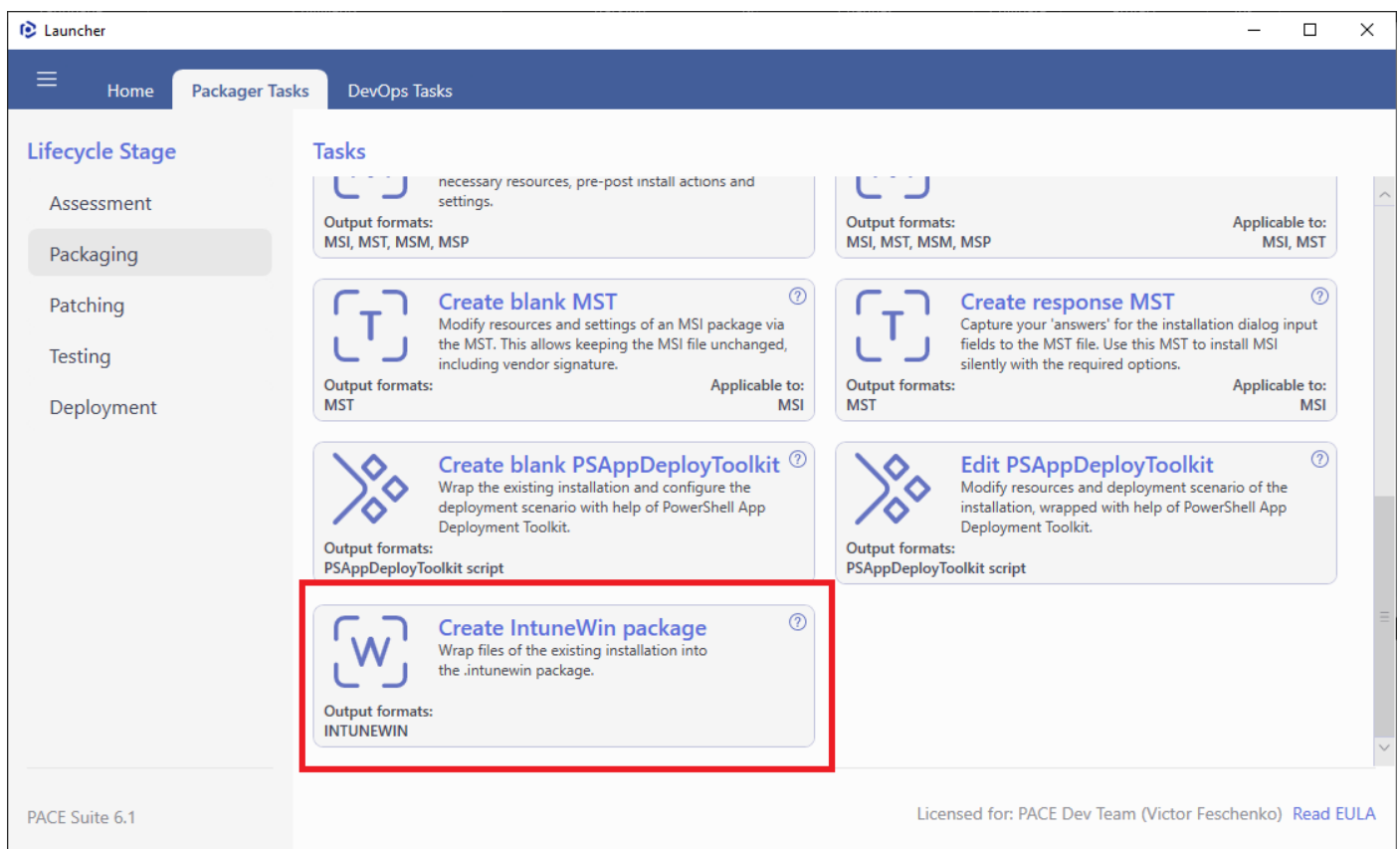
This new feature is designed specifically for software vendors. It allows you to automatically create MSI installers for the software you develop and can be integrated into CI/CD tools.

The wizard helps non-MSI engineers configure a project for your future MSI installer. Later you can deeply customize resources, installation behavior, and the user interface of your MSI.

The **File Harvesting feature** will add any dynamic set of files generated by compiling the program code. It can also apply the include/exclude filters to identify only the required files, work with absolute and relative paths, and support user-defined variables in paths.

The created output MSI installer can be digitally signed and automatically validated.

1.3 IntuneWin 30GB Limit



The screenshot shows the 'Launcher' application window with the 'Packager Tasks' tab selected. The interface includes a sidebar with 'Lifecycle Stage' options (Assessment, Packaging, Patching, Testing, Deployment) and a main 'Tasks' area. The 'Create IntuneWin package' task is highlighted with a red border. The task description is: 'Wrap files of the existing installation into the .intunewin package.' The output format is listed as 'INTUNEWIN'. Other tasks visible include 'Create blank MST', 'Create response MST', 'Create blank PSAppDeployToolkit', and 'Edit PSAppDeployToolkit'.

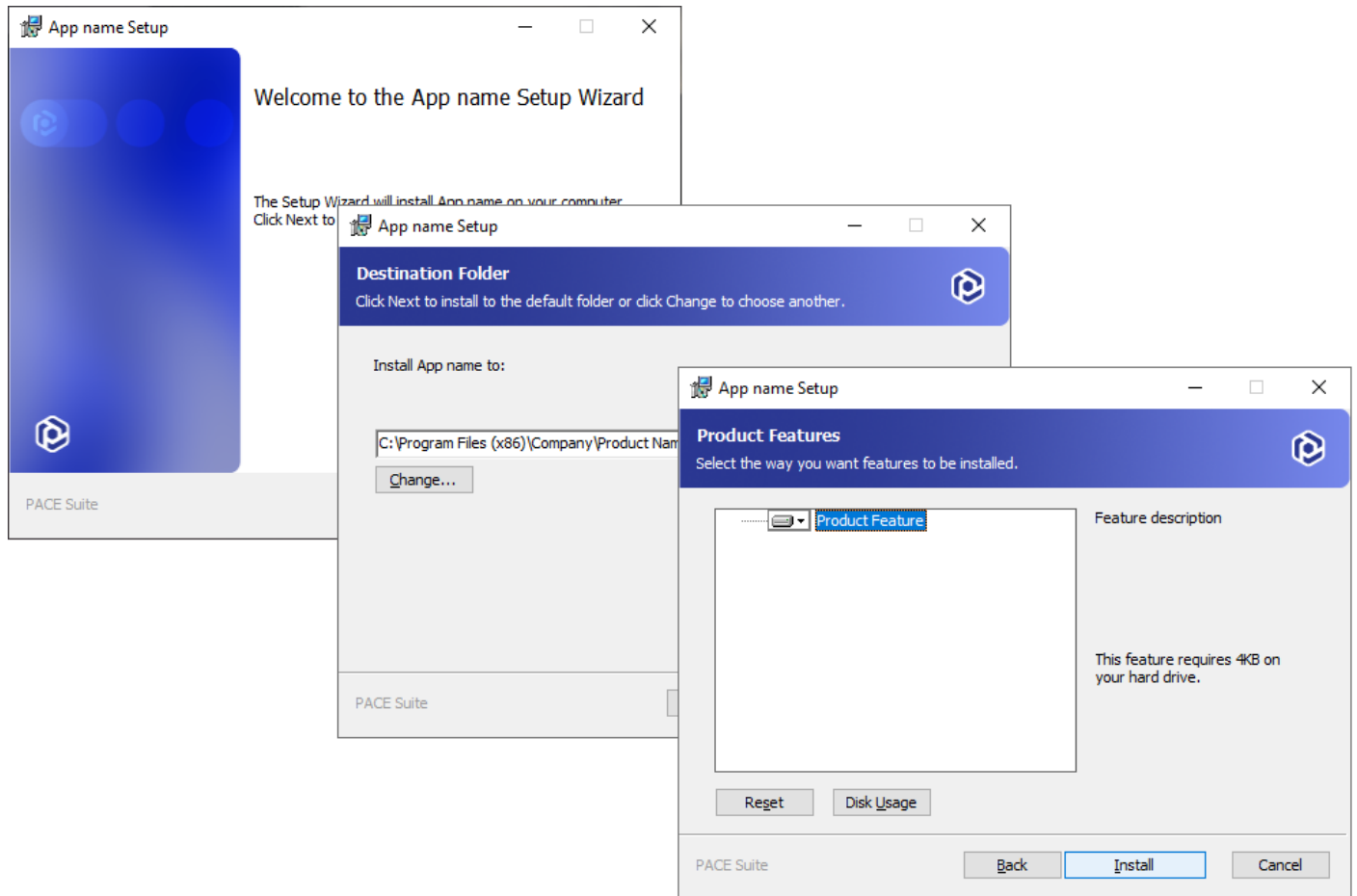
PACE Suite 6.1

Licensed for: PACE Dev Team (Victor Feschenko) [Read EULA](#)

The popular cloud-based Unified Endpoint Management (UEM) solution recently has increased the maximum size limit for Win32 apps from 8 GB to 30 GB.

We have added support for creating an IntuneWin package up to 30GB in size.

1.4 New MSI Templates



Meet the **new templates** based on which MSI packages are created in the **MSI Editor** and **Package Generator**.

The updated templates are much cleaner and include a predefined user interface for the initial installation, maintenance, and removal of the package.

1.5 Improvements and Fixes

- Fixed issue of opening MSI with no tables.
- Automatic addition of required Standard Actions on saving MSI.
- Improved the MSI installation simulation mechanism when generating a response MST.
- Fixed errors when adding resources to MSI with non-standard columns in MSI database.
- Fixed issue with dropping several standard tables.

2 Release History

- [PACE Suite 6.1](#)
- [PACE Suite 6.0](#)
- [PACE Suite 5.8](#)
- [PACE Suite 5.7](#)
- [PACE Suite 5.6](#)
- [PACE Suite 5.5](#)
- [PACE Suite 5.4](#)
- [PACE Suite 5.3](#)
- [PACE Suite 5.2](#)
- [PACE Suite 5.1](#)
- [PACE Suite 5.0](#)
- [PACE Suite 4.7](#)
- [PACE Suite 4.6](#)
- [PACE Suite 4.5](#)
- [PACE Suite 4.4](#)
- [PACE Suite 4.3](#)
- [PACE Suite 4.2](#)
- [PACE Suite 4.1](#)
- [PACE Suite 4.0](#)
- [PACE Suite 3.5.5](#)
- [PACE Suite 3.5](#)
- [PACE Suite 3.4.2](#)
- [PACE Suite 3.4.1](#)
- [PACE Suite 3.4](#)
- [PACE Suite 3.3 – 3.3.1](#)