

RELEASE NOTES

PACE Suite 5.8



Table of Contents

1	PACE Suite Overview	3
1.1	Software Prerequisites	4
1.2	Hardware Prerequisites	4
2	Release Notes	5
2.1	About This Release	5
2.2	ODBC Management.....	6
2.3	Close Applications.....	7
2.4	Improvements and Fixes	8
3	Release History.....	9

1 PACE Suite Overview

PACE Suite is an advanced and fast software-packaging tool with an intuitive user interface and set of features providing (re)packaging in Windows Installer, UWP (MSIX/APPX), and various virtualized formats.

Components:

Tool	Purpose
Launcher	<ul style="list-style-type: none">• Combine all PACE Suite tools (listed below)• Collect all major functions in a single place for quick access• Configure virtual machine configuration for remote capturing and testing, etc.
Setup Capture	<ul style="list-style-type: none">• Run repackaging on the remote virtual machine• Run repackaging on the local host• Detect embedded (hidden) MSI installers• Take a system snapshot of the local host• Compare two snapshots on the local host
Package Generator	<ul style="list-style-type: none">• Edit installation project• Generate MSI, MSIX, APPX, APPV, THINAPP package
MSI Editor	<ul style="list-style-type: none">• Edit MSI/MST• Create MSP, MSM• Integrate MSI upgrade• Estimate package complexity• Run ICE validation• Publish to Microsoft SCCM 2007, 2012, 2016.• Generate package report
Quality Approver	<ul style="list-style-type: none">• Check MSI readiness• Check MSIX/APPX readiness
Docu Generator	<ul style="list-style-type: none">• Record on-screen actions into a document

1.1 Software Prerequisites

Ensure that a target system contains necessary software prerequisites:

OS	Windows or Windows Server OS that supports .NET 4.7.2 (https://docs.microsoft.com/en-us/dotnet/framework/get-started/system-requirements) or higher.
	<p>NOTE Building Universal Windows Platform app packages (MSIX/APPX) is available under Windows 10 or Windows Server 2016 and newer.</p> <p>Automated package testing with Quality Approver requires a virtual machine with Windows 10 version 1803 or newer.</p>
Middleware	Microsoft .NET Framework 4.7.2 (https://dotnet.microsoft.com/download/dotnet-framework-runtime) or higher.
	<p>NOTE For building THINAPP packages, ensure that your system contains VMware ThinApp (5.0.0/5.0.1/5.1.0/5.1.1/5.2.0) installed and activated with a valid license.</p> <p>For publishing MSI packages to Microsoft SCCM 2007 (SP1/SP2/R1/R2) or SCCM 2012 (SP1/SP2/R2/R2 SP1) server, ensure that your system contains Microsoft Management Framework 3.0 and Windows Remote Management (WinRM) service enabled.</p>
Privileges	Administrative privileges on the system.

1.2 Hardware Prerequisites

Ensure that a target system fulfills the minimum hardware conditions:

Processor	32-bit (x86) or 64-bit (x64) processor at 2 GHz or greater
	NOTE To repackage 64-bit applications or create 64-bit App-V packages, use PACE Suite on a 64-bit Windows operating system.
RAM	2 GB
Hard drive free space	1 GB NOTE Additional storage is required for your projects and packages depending on their size and quantity.
Display	1280 x 800 resolution or higher.

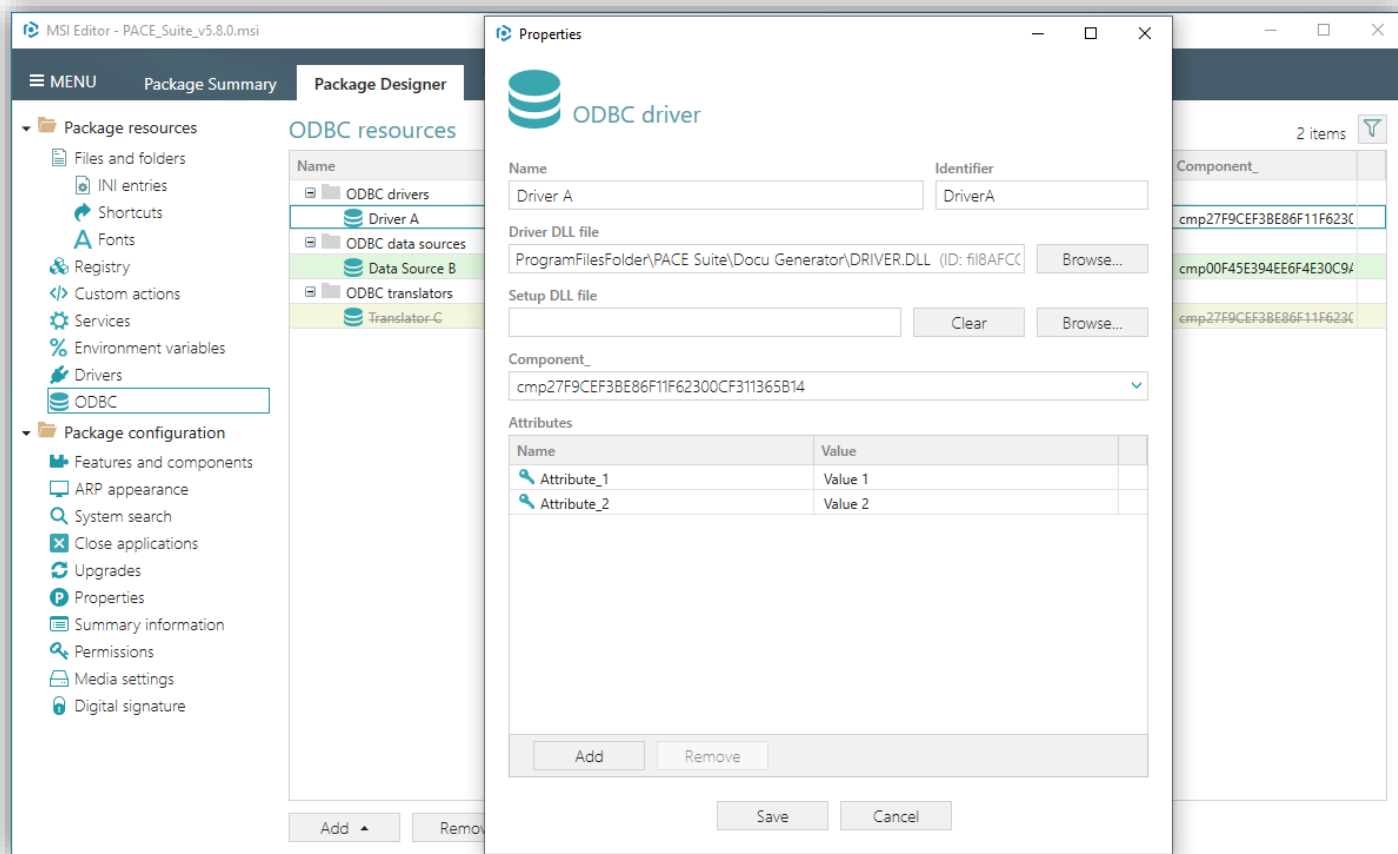
2 Release Notes

2.1 About This Release

This release of PACE Suite includes the following changes:

- ODBC Management
For details, see section 2.2
- Close Applications
For details, see section 2.3
- Improvements
For details, see section 2.4

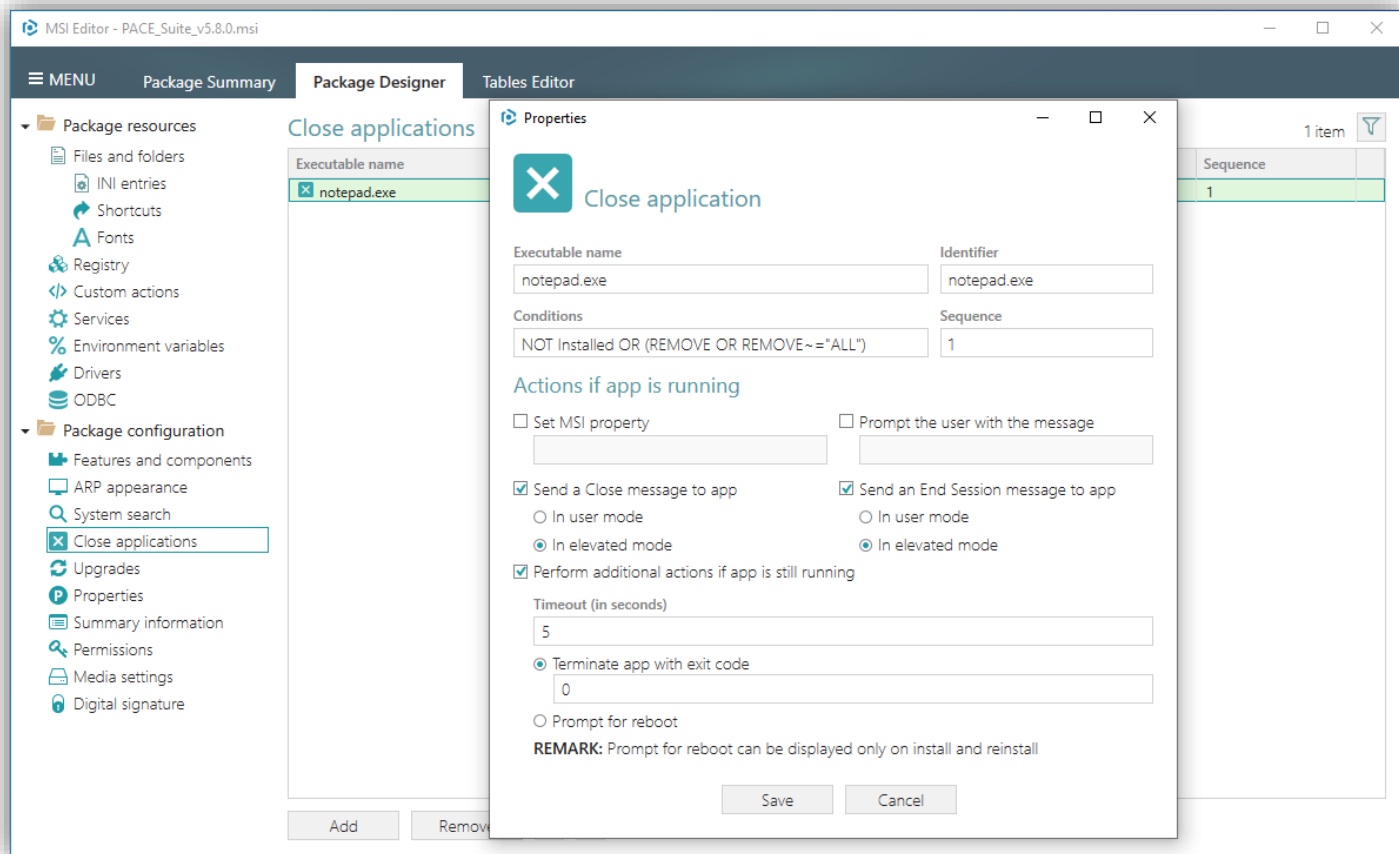
2.2 ODBC Management



Open Database Connectivity (ODBC) is a standard application programming interface that allows external applications to access data from diverse database management systems. With PACE Suite, you can view and easily manage the installation and configuration of **ODBC drivers**, **data sources**, and **translators** of your MSI package.

The new ODBC UI of Package Designer collects data from the ODBCDriver, ODBCAttribute, ODBCDataSource, ODBCSourceAttribute, and ODBCTranslator MSI tables, transforms and presents them in a user-friendly view. This allows you to determine at a glance what and how many ODBC resources this package installs. In case of necessity, you can modify the existing and add a new ODBC driver, data source, and translator. The advanced validation rules reduce human errors and increase package quality.

2.3 Close Applications



If your MSI package installs an Add-on, Plug-in, or may update shared files used by other processes, it would be a great idea to check if these processes are running and, if so, close them. In addition, to ensure clear package removal, the applications from this package must be closed.

What does this mean for the packaging engineer? They need to write a script that identifies and terminates the necessary processes. The application is forcibly terminated without the ability to save user data. It takes an engineer some time to write and test such a script. All this increases the price of the package.

To solve this problem, we developed the new 'Close applications' UI of Package Designer that enables you to easily define what processes should be closed and in what way when installing and uninstalling a package.

This new view allows defining multiple applications that should be closed. For each of them, you can configure how an application must be closed: send a Close and/or End Session messages, terminate after timeout if still running; prompt the user with a message, set an MSI property for building a further installation behavior, and choose other useful options.

2.4 Improvements and Fixes

Common:

- Fixed the issue with activating the product if the license key is copied with spaces.
- Solved the problem with disabling the check for PACE Suite updates.

Setup Capture:

- Fixed the 'The connection to VM has been lost' issue while capturing on the remote Hyper-V virtual machine.
- Fixed PACE Tuner installation on Windows 11.

MSI Editor:

- Fixed the issue with importing INI files that contain identical sections and keys.
- Fixed the issue with the disabled Save menu item after running Active Scripting.
- Fixed crash on editing an Icon table.

Package Generator:

- Fixed the issue while building MSI via the command line.
- Fixed the issue with creating a package in a project folder with restricted access.
- Fixed the issue with skipping zero-size INI files while building a package.

3 Release History

- [PACE Suite 5.7](#)
- [PACE Suite 5.6](#)
- [PACE Suite 5.5](#)
- [PACE Suite 5.4](#)
- [PACE Suite 5.3](#)
- [PACE Suite 5.2](#)
- [PACE Suite 5.1](#)
- [PACE Suite 5.0](#)
- [PACE Suite 4.7](#)
- [PACE Suite 4.6](#)
- [PACE Suite 4.5](#)
- [PACE Suite 4.4](#)
- [PACE Suite 4.3](#)
- [PACE Suite 4.2](#)
- [PACE Suite 4.1](#)
- [PACE Suite 4.0](#)
- [PACE Suite 3.5.5](#)
- [PACE Suite 3.5](#)
- [PACE Suite 3.4.2](#)
- [PACE Suite 3.4.1](#)
- [PACE Suite 3.4](#)
- [PACE Suite 3.3 – 3.3.1](#)