

RELEASE NOTES

PACE Suite 5.6









Table of Contents

1	PACE Suite Overview.....	3
1.1	Software Prerequisites	4
1.2	Hardware Prerequisites	4
2	Release Notes.....	5
2.1	About This Release.....	5
2.2	UI for Environment Variables.....	6
2.3	UI for Services	7
3	Release History.....	9

1 PACE Suite Overview

PACE Suite is an advanced and fast software-packaging tool with an intuitive user interface and set of features providing (re)packaging in Windows Installer, UWP (MSIX/APPX), and various virtualized formats.

Components:

App	Purpose
 Launcher	<ul style="list-style-type: none"> • Combine all PACE Suite tools (listed below) • Collect all major functions in a single place for quick access • Configure virtual machine configuration for remote capturing and testing, etc.
 Setup Capture	<ul style="list-style-type: none"> • Run repackaging on remote virtual machine • Run repackaging on local host • Detect embedded (hidden) MSI installers • Take system snapshot on local host • Compare two snapshots on local host
 MSI Generator	<ul style="list-style-type: none"> • Edit installation project • Build MSI, MSIX, APPX, APPV, THINAPP package
 MSI Editor	<ul style="list-style-type: none"> • Edit MSI/MST • Create MSP, MSM • Integrate MSI upgrade • Estimate package complexity • Run ICE validation • Publish to Microsoft SCCM 2007, 2012, 2016. • Generate package report
 Quality Approver	<ul style="list-style-type: none"> • Check MSI readiness • Check MSIX/APPX readiness
 Docu Generator	<ul style="list-style-type: none"> • Record on-screen actions into a document

1.1 Software Prerequisites

Ensure that a target system contains necessary software prerequisites:

Windows or Windows Server OS that supports .NET 4.7.2

(<https://docs.microsoft.com/en-us/dotnet/framework/get-started/system-requirements>) or higher.

OS

NOTE

Building Universal Windows Platform app packages (MSIX/APPX) is available under Windows 10 or Windows Server 2016 and newer.

Automated package testing with **Quality Approver** requires a virtual machine with Windows 10 version 1803 or newer.

Microsoft .NET Framework 4.7.2 (<https://dotnet.microsoft.com/download/dotnet-framework-runtime>) or higher.

Middleware

NOTE

For building THINAPP packages, ensure that your system contains VMware ThinApp (5.0.0/5.0.1/5.1.0/5.1.1/5.2.0) installed and activated with the valid license.

For publishing MSI packages to Microsoft SCCM 2007 (SP1/SP2/R1/R2) or SCCM 2012 (SP1/SP2/R2/R2 SP1) server, ensure that your system contains Microsoft Management Framework 3.0 and Windows Remote Management (WinRM) service enabled.

Privileges

Administrative privileges on the system.

1.2 Hardware Prerequisites

Ensure that a target system fulfills the minimum hardware conditions:

32-bit (x86) or 64-bit (x64) processor at 2 GHz or greater

Processor

NOTE To repackage 64-bit applications or create 64-bit App-V packages, use PACE Suite on a 64-bit Windows operating system.

RAM

2 GB

Hard drive free space

1 GB

NOTE Additional storage is required for your projects and packages and depends on their size and quantity.

Display

1280 x 800 resolution or higher.

2 Release Notes

2.1 About This Release

The 5.6 release of PACE Suite includes the following new features:

- **UI for Environment Variables**

View and manage Environment Variables that will be installed by the MSI package with the use of a simple and user-friendly interface of Package Designer.

For details, see section 2.2

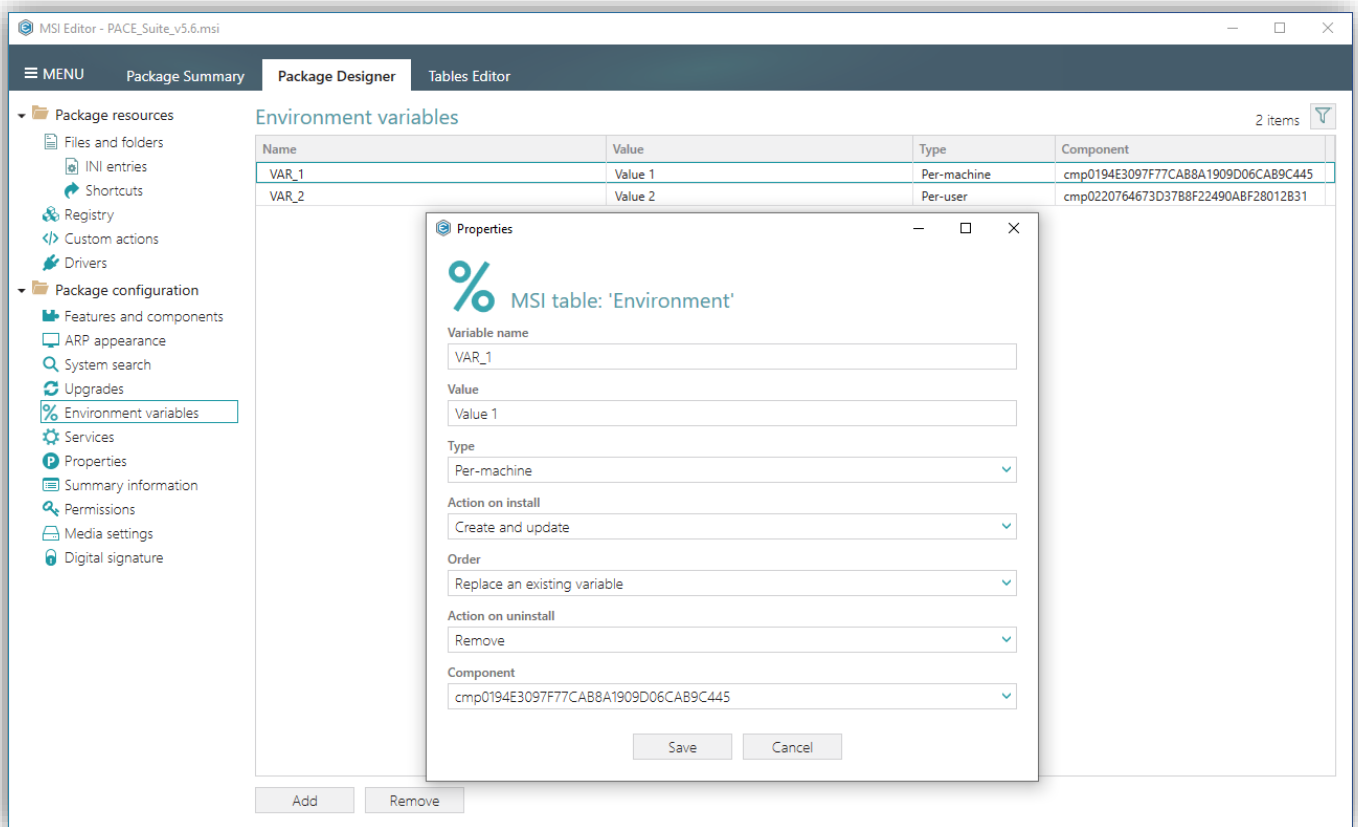
- **UI for Services**

Benefit from the brand new Services tab of Package Designer for installing and controlling Windows services.

For details, see section 2.3

2.2 UI for Environment Variables

Tool: MSI Editor



View and manage **Environment Variables** that will be installed by the MSI package with the use of a simple and user-friendly interface of Package Designer. There is no longer a need to deep dive into the particularity of MSI tables.

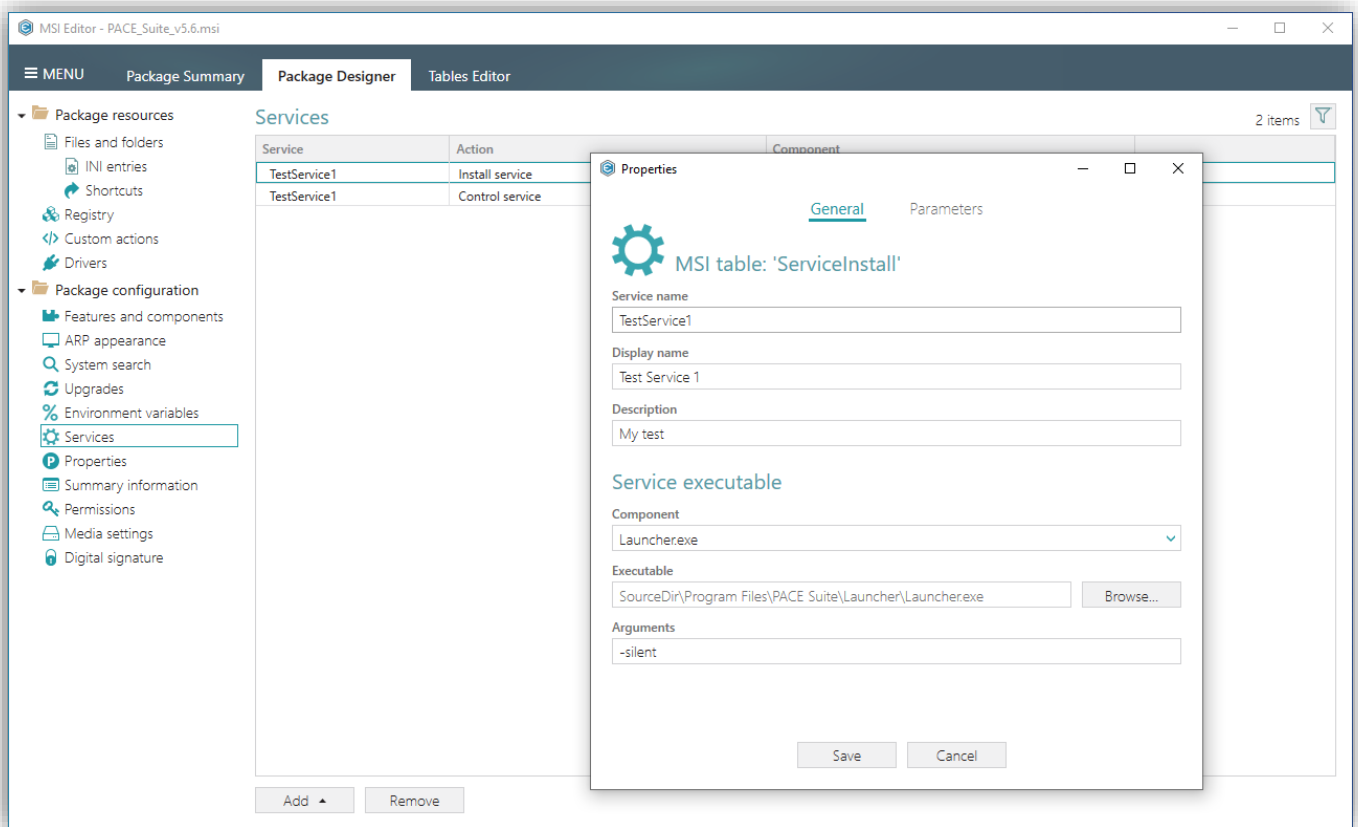
All that long set of prefixes, their combinations and special characters of the [Environment table](#) are now presented as a dialog with available and compatible settings, written in human language.

When creating or editing an Environment Variable, you can control:

- Variable **Name** and **Value**;
- its installation **Type** (per-machine / per-user);
- **Actions on install** – what to do on install (create and update / only create if missing / remove);
- **Order** - how to store new value if the variable already exists (replace / append to the end / prefix to the front);
- **Actions on uninstall** – what to do on uninstall (remove / keep);
- **Component** – what component will trigger variable installation/de-installation.

2.3 UI for Services

Tool: MSI Editor

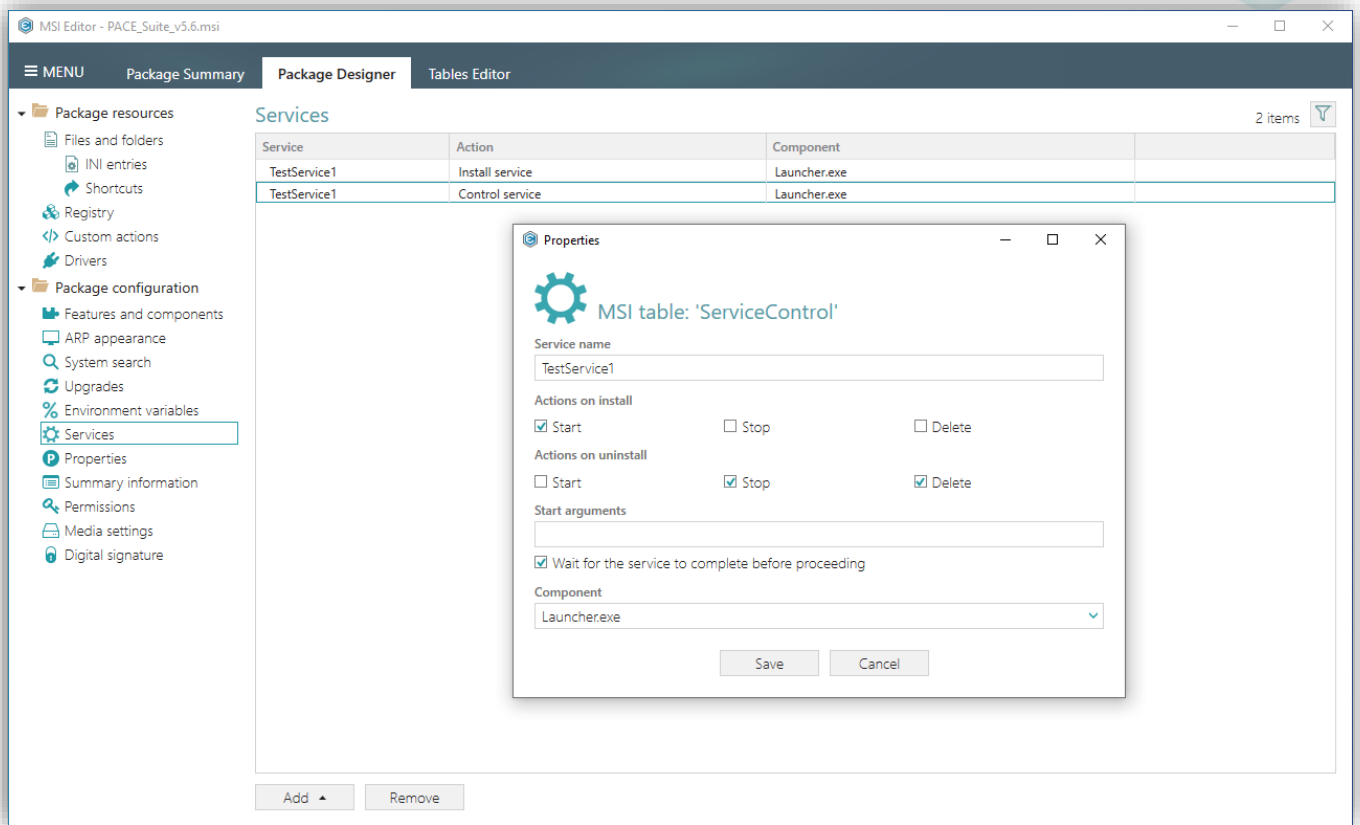


Benefit from the brand new **Services** tab of Package Designer for installing and controlling Windows services.

The simple view displays a list of Win32 services that will be installed and controlled by this package. Therefore, it combines the content of both [ServiceInstall](#) and [ServiceControl](#) tables in a single place to make it easier to find resources affected by the MSI.

When creating/editing a **Service Install** entry, you can manage:

- **Service name**, **display name**, and **description**;
- **Executable** and **arguments**;
- **Service type** (runs its own process / shares a process);
- **Start type** (automatic / demand / disabled);
- **Error control** (ignore / normal / critical);
- **Load order group** (a string that names the load ordering group of which this service is a member);
- **Dependencies** (a list of names of services or load ordering groups that the system must start before this service);
- **User (start) name** and **password** (service is logged on with the specified account credentials; if blank, the LocalSystem account will be used).



When creating/editing a **Service Control** entry, you can manage:

- **Service name** (a service that will be controlled);
- **Actions on install** (start / stop / delete);
- **Action on uninstall** (start / stop / delete);
- **Start arguments**;
- **Component** (a component that triggers service controlling during installation/de-installation).



3 Release History

- [PACE Suite 5.5](#)
- [PACE Suite 5.4](#)
- [PACE Suite 5.3](#)
- [PACE Suite 5.2](#)
- [PACE Suite 5.1](#)
- [PACE Suite 5.0](#)
- [PACE Suite 4.7](#)
- [PACE Suite 4.6](#)
- [PACE Suite 4.5](#)
- [PACE Suite 4.4](#)
- [PACE Suite 4.3](#)
- [PACE Suite 4.2](#)
- [PACE Suite 4.1](#)
- [PACE Suite 4.0](#)
- [PACE Suite 3.5.5](#)
- [PACE Suite 3.5](#)
- [PACE Suite 3.4.2](#)
- [PACE Suite 3.4.1](#)
- [PACE Suite 3.4](#)
- [PACE Suite 3.3 – 3.3.1](#)