

RELEASE NOTES

PACE Suite 5.4









Table of Contents

1	PACE Suite Overview	3
1.1	Software Prerequisites	4
1.2	Hardware Prerequisites	4
2	Release Notes	5
2.1	About This Release	5
2.2	Launcher	6
2.3	Setup Capture	7
2.4	Command line support	8
2.5	Search	9
2.6	Other Improvements	10
2.6.1	All tools	10
2.6.2	Launcher	10
2.6.3	Quality Approver	10
2.6.4	MSI Generator	10
3	Release History	11

1 PACE Suite Overview

PACE Suite is an advanced and fast software-packaging tool with an intuitive user interface and set of features providing (re)packaging in Windows Installer, UWP (MSIX/APPX) and various virtualized formats.

Components:

App	Purpose
 Launcher	<ul style="list-style-type: none">• Combine all PACE Suite tools (listed below)• Collect all major functions in a single place for quick access• Configure virtual machine configuration for remote capturing and testing, etc.
 Setup Capture	<ul style="list-style-type: none">• Run repackaging on remote virtual machine• Run repackaging on local host• Detect embedded (hidden) MSI installers• Take system snapshot on local host• Compare two snapshots on local host
 MSI Generator	<ul style="list-style-type: none">• Edit installation project• Build MSI, MSIX, APPX, APPV, THINAPP package
 MSI Editor	<ul style="list-style-type: none">• Edit MSI/MST• Create MSP, MSM• Integrate MSI upgrade• Estimate package complexity• Run ICE validation• Publish to Microsoft SCCM 2007, 2012, 2016.• Generate package report
 Quality Approver	<ul style="list-style-type: none">• Check MSI readiness• Check MSIX/APPX readiness
 Docu Generator	<ul style="list-style-type: none">• Record on-screen actions into a document

1.1 Software Prerequisites

Ensure that a target system contains necessary software prerequisites:

OS	Windows or Windows Server OS that supports .NET 4.7.2 (https://docs.microsoft.com/en-us/dotnet/framework/get-started/system-requirements) or higher.
	NOTE Building Universal Windows Platform app packages (MSIX/APPX) is available under Windows 10 or Windows Server 2016 and newer. Automated package testing with Quality Approver requires a virtual machine with Windows 10 version 1803 or newer.
Middleware	Microsoft .NET Framework 4.7.2 (https://dotnet.microsoft.com/download/dotnet-framework-runtime) or higher.
	NOTE For building THINAPP packages, ensure that your system contains VMware ThinApp (5.0.0/5.0.1/5.1.0/5.1.1/5.2.0) installed and activated with the valid license. For publishing MSI packages to Microsoft SCCM 2007 (SP1/SP2/R1/R2) or SCCM 2012 (SP1/SP2/R2/R2 SP1) server, ensure that your system contains Microsoft Management Framework 3.0 and Windows Remote Management (WinRM) service enabled.
Privileges	Administrative privileges on the system.

1.2 Hardware Prerequisites

Ensure that a target system fulfils the minimum hardware conditions:

Processor	32-bit (x86) or 64-bit (x64) processor at 2 GHz or greater
	NOTE To repackage 64-bit applications or create 64-bit App-V packages, use PACE Suite on a 64-bit Windows operating system.
RAM	2 GB
Hard drive free space	1 GB NOTE Additional storage is required for your projects and packages and depends on their size and quantity.
Display	1280 x 800 resolution or higher.

2 Release Notes

2.1 About This Release

PACE Suite 5.4 release is a big step in our guided approach to application packaging. This release brings many improvements that ease finding the desired functions in PACE Suite, automate more workloads and find package resources quicker, ultimately making your packaging even more frictionless and efficient.

The 5.4 release introduces two new members to the PACE Suite family of applications – **Launcher** and **Setup Capture**.

(1) **Launcher** is created to combine all PACE Suite tools in a single place and unify accessing common functions. We have grouped the most-used packaging tasks with respect to the packaging lifecycle.

(2) **Setup Capture** is a capturing tool that runs repackaging on the local host and remote virtual machines. This is the small app that does not require PACE Suite license – simply copy and run it where you need. We have reworked and significantly improved the capturing engine and capturing wizard, moved from MSI Generator. Setup Capture can perform fully automated and unattended capturing on a remote VM.

The frequently-used PACE Suite tools got the (3) **command line support**. Now it is possible to repackage, build and test the package with the use of a simple script.

Among other improvements, we have implemented (4) **search in MSI Generator**. Now you can quickly find the necessary captured/imported resources in the project.

.

2.2 Launcher

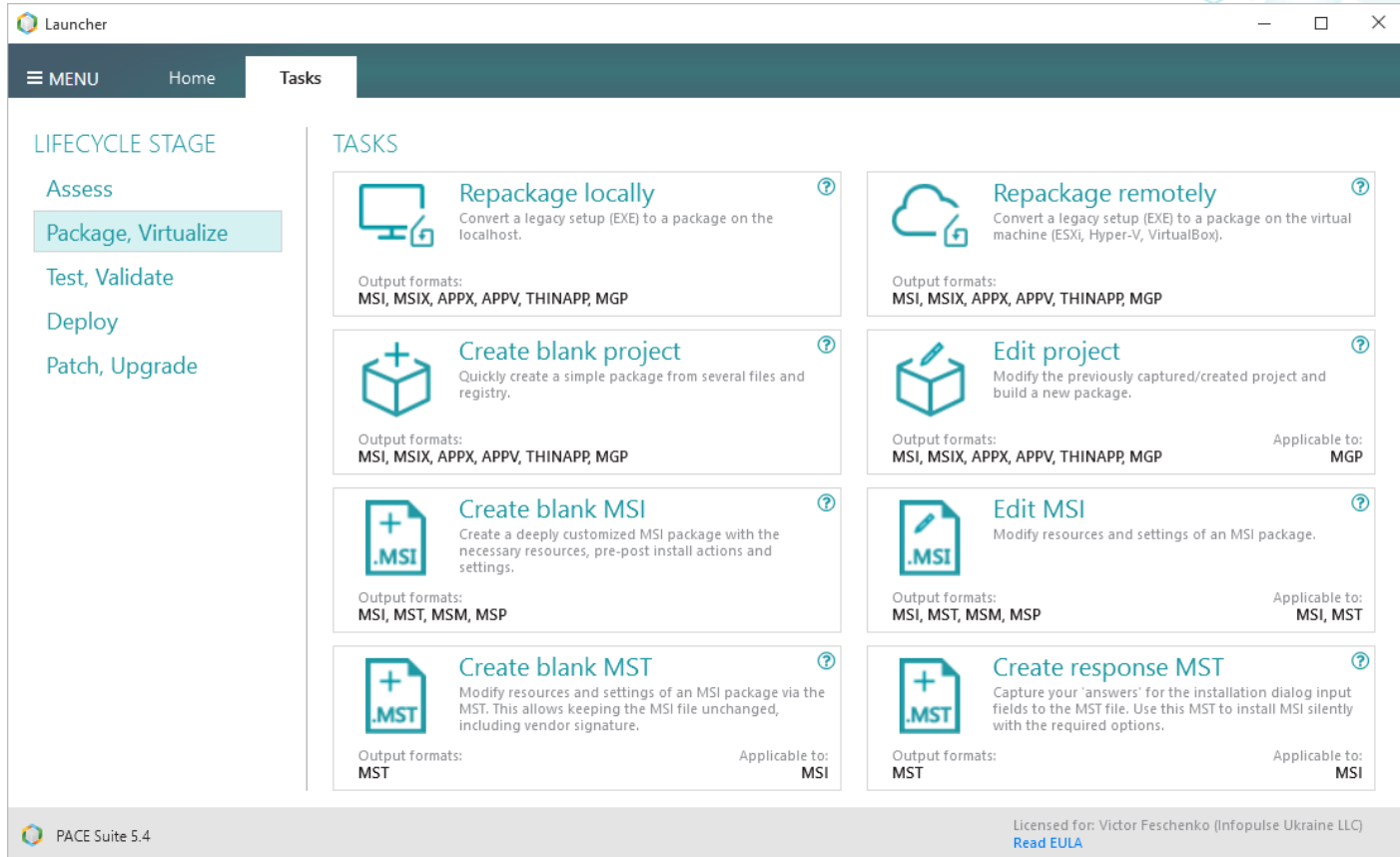
The newest member of the PACE Suite family of applications combines all your favourite tools in one place. Launcher takes the guided approach to application packaging to the next level and aligns various workloads with respective stages of the packaging lifecycle.

You can find a clickable list of all PACE Suite apps on the *Home* tab and an interactive diagram of the packaging lifecycle. A click on a stage opens a list of appropriate functions on the *Tasks* tab.

The screenshot displays the PACE Suite Launcher application window. The interface is divided into several sections:

- Top Bar:** Includes a "MENU" button, "Home" and "Tasks" tabs, and standard window controls.
- Left Sidebar (PACE SUITE APPS):**
 - Repackaging:** Local Setup Capture, Remote Setup Capture, Take local snapshot, Compare snapshots.
 - Customization:** MSI Editor, MSI Generator.
 - Validation:** Quality Approver.
 - Documentation:** Docu Generator.
- Main Content Area (PACE SUITE IN THE PACKAGE LIFECYCLE):**
 - A central diagram shows five stages in hexagons: **Assess**, **Package, Virtualize**, **Test, Validate**, **Deploy**, and **Patch, Upgrade**. Arrows indicate a clockwise flow between these stages.
 - Assess tasks:** Create discovery docs, Estimate complexity, Detect embedded MSI, Get number of resources.
 - Package, Virtualize tasks:** Repackage installation, Create package from scratch, Alter vendor package, Build MSI, MST, MSIX, APPX, APPV, THINAPP.
 - Test, Validate tasks:** Run ICE validation, Check package readiness.
 - Deploy tasks:** Publish to SCCM, Generate deployment cmd, Generate package report, Generate AppInstaller.
 - Patch, Upgrade tasks:** Create patch, Integrate upgrade.
- Right Sidebar:**
 - User guide
 - Contact support
 - Settings
 - About
 - Configuration:** VM for capturing, VM for testing.
 - Quick help:** Automation, Team work.
- Footer:**
 - PACE Suite 5.4
 - Licensed for: PACE Suite team (Infopulse Ukraine LLC) [Read EULA](#)

For instance, you can review all functions of the *Package, Virtualize* stage on the *Tasks* tab and run them right there. No need to explore menus of various PACE Suite tools anymore – let Launcher quickly guide you to the right app and speed up the completion of your packaging tasks.



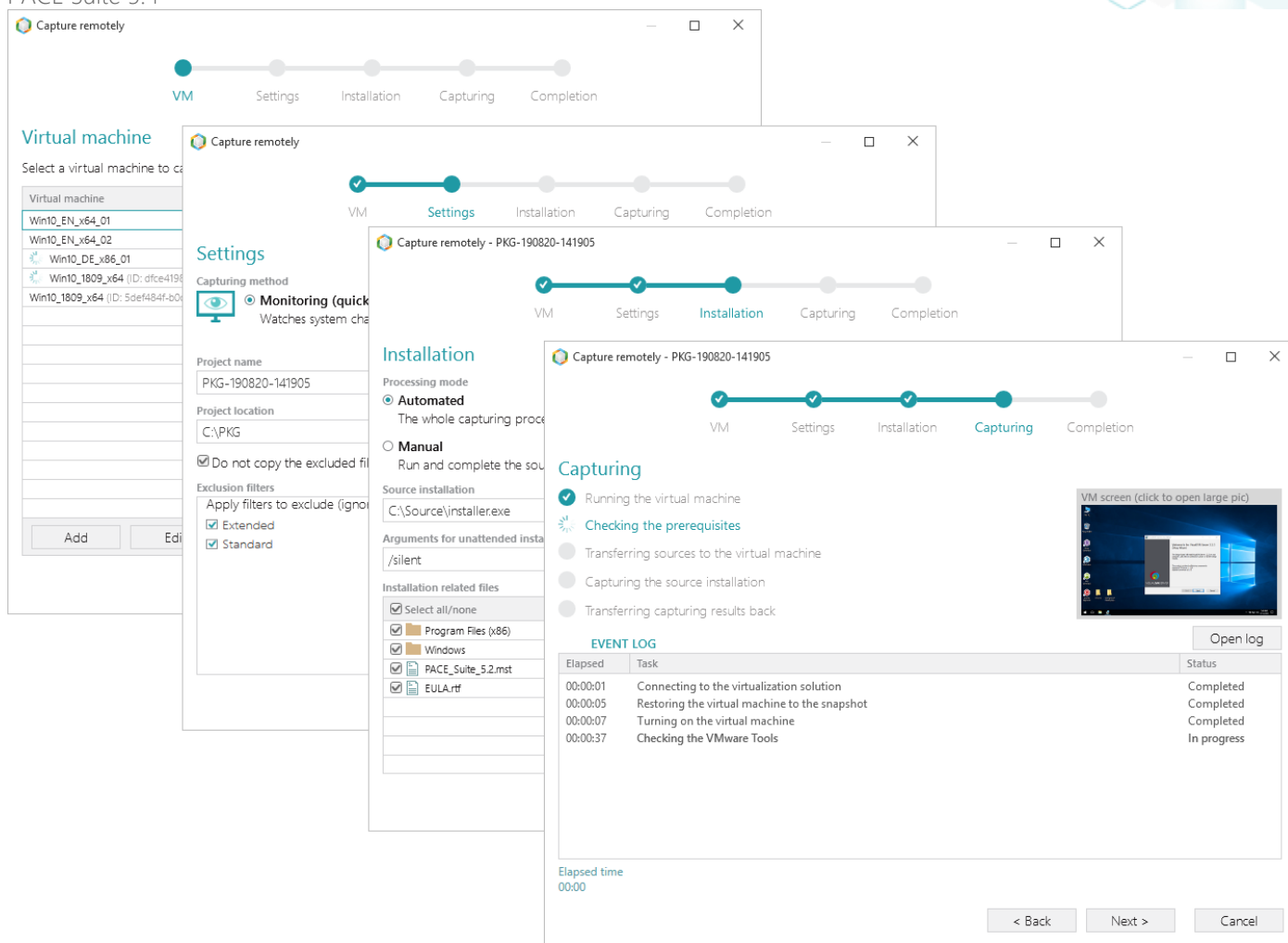
Note little tool tips near every Task – get a quick tip anytime you are not sure how to proceed.

2.3 Setup Capture

Another new tool coming to PACE Suite is Setup Capture, which is now responsible for capturing/repackaging. We separated the capturing functionality from MSI Generator and fundamentally redesigned it. Brand new Setup Capture is a small portable app that does not require PACE Suite license. You can run it wherever you want to capture source installations or manual configurations. Setup Capture functions as two wizards: (1) for capturing on the local host in the manual and automated modes; (2) for capturing on VMware ESXi, Microsoft Hyper-V and Oracle VirtualBox virtual machines in either manual or automated mode. Additionally, Setup Capture has separate single-window functions to manually take and compare snapshots on the local host. All its functions can be run from the command line.

Release Notes

PACE Suite 5.4



2.4 Command line support

You can save even more time and efforts by running the PACE Suite applications from the command line. Run scripts for automation of routine packaging tasks like local/remote capturing, generating packages of various formats, testing and more.

Supported command line switches:

Setup Capture:

- Take a system snapshot on the local host
- Compare two snapshots on the local host
- Execute capturing on remote virtual machine
(includes taking the 1st snapshot; running the installer in a silent mode; taking the 2nd snapshot; comparing the snapshots and creating the project in an unattended mode)

MSI Generator:

Release Notes

PACE Suite 5.4

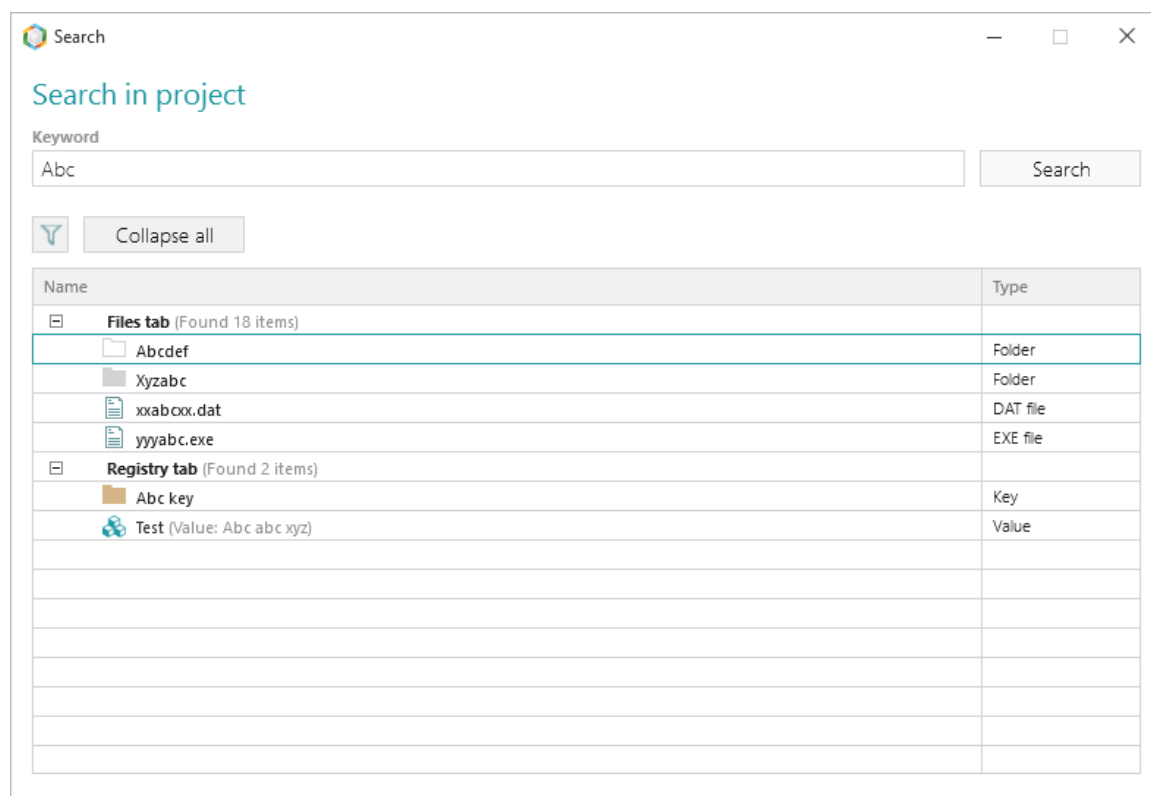
- Build MSI from the project (the list of available parameters is extended essentially)
- Build MSIX from the project
- Build APPX from the project
- Build APPV from the project

Quality Approver:

- Test MSI against the Windows 10 Desktop App Certification Program
- Test MSIX against the Windows Store requirements
- Test APPX against the Windows Store requirements

2.5 Search

We introduced the ability to search for particular project resources in MSI Generator. This can significantly ease removing/modifying the resources in a large packaging project.



2.6 Other Improvements

2.6.1 All tools

- Deactivate the current license in the Help > About menu.
- Activate the entire PACE Suite by entering the license key in a single application.

2.6.2 Launcher

- Generate the deployment (install, repair, uninstall) CMD scripts for the MSI package.

2.6.3 Quality Approver

- Re-connect to the virtual machine.
- Copy long files in small parts to/from virtual machines.
- Highlight the virtual machines, which are currently in use, in the list of configured ones.
- Auto-upgrade previous versions of PACE Suite Tuner on a virtual machine.
- Search for the VM in the list of configured ones.

2.6.4 MSI Generator

- MSI Generator now does not require administrative privileges to build MSI, MSIX, APPX. Note that generation of APPV packages still requires the admin rights.

3 Release History

- [PACE Suite 5.3](#)
- [PACE Suite 5.2](#)
- [PACE Suite 5.1](#)
- [PACE Suite 5.0](#)
- [PACE Suite 4.7](#)
- [PACE Suite 4.6](#)
- [PACE Suite 4.5](#)
- [PACE Suite 4.4](#)
- [PACE Suite 4.3](#)
- [PACE Suite 4.2](#)
- [PACE Suite 4.1](#)
- [PACE Suite 4.0](#)
- [PACE Suite 3.5.5](#)
- [PACE Suite 3.5](#)
- [PACE Suite 3.4.2](#)
- [PACE Suite 3.4.1](#)
- [PACE Suite 3.4](#)
- [PACE Suite 3.3 – 3.3.1](#)