



RELEASE NOTES

PACE Suite 5.2





Table of Contents

1	PACE Suite Overview	3
1.1	Key Advantages	3
1.2	PACE Components	3
1.3	System Requirements.....	4
1.4	Hardware Requirements.....	4
2	Release Notes	5
2.1	About This Release.....	5
2.2	New features of MSI Generator.....	6
2.2.1	New Files tab	6
2.2.2	New Shortcuts\Apps -> MSI tab	12
2.2.3	New Registry tab	17
2.2.4	APPV and UWP app deletion	22
2.3	Other Improvements.....	23
2.3.1	MSI Generator.....	23
2.3.2	MSI Editor.....	23
3	Release History	24



1 PACE Suite Overview

PACE Suite is an advanced and fast software packaging tool with an intuitive user interface and set of features providing (re)packaging in Windows Installer, UWP (MSIX/APPX) and various virtualized formats.

1.1 Key Advantages

- Out-of-the-box application packaging solution
- Intelligible wizards for running complex user scenarios
- High performance when generating large packages
- Per-user license valid for any number of physical and virtual machines

1.2 PACE Components

PACE Suite consists of the following components:



- Repackage any existing installation into Windows Installer (MSI), UWP app package (MSIX/APPX) or a virtualization format (Microsoft App-V 5.x, and VMware ThinApp).
- Auto-detection of embedded installers.
- Create a response transform
- Include the excluded files/registry back to a package



- Manage the contents of an MSI in a tree view
- Import the necessary resources
- Edit and manage Custom Actions and Device Drivers
- Integrate scripts into your package
- Use a smart and advanced MSI database editor, with formatted string autocompleting, Excel-like formula bar, row reference tracking, and more.
- Create patches (MSP) and Merge Modules (MSM)
- Manage permission settings for file system and registry
- Handle upgrades easily – just let MSI Editor know which MSI you want to be upgraded at runtime.
- Publish your applications to Microsoft SCCM.
- See the estimated complexity of an app right away.
- Generate package documentation containing the details about your package and configuration.
- Undo-redo any manipulation and see the changes highlighted in the MSI tables



- Automatically record your on-screen actions into a nice-looking document with screenshots and annotations

1.3 System Requirements

Ensure that a target system contains necessary software prerequisites:

OS	<p>Windows or Windows Server OS that supports .NET 4.7.2 (https://docs.microsoft.com/en-us/dotnet/framework/get-started/system-requirements) or higher.</p> <p>NOTE Building Universal Windows Platform app packages (MSIX/APPX) is available under Windows 10 or Windows Server 2016 and newer.</p>
Middleware	<p>Microsoft .NET Framework 4.7.2 (https://dotnet.microsoft.com/download/dotnet-framework-runtime) or higher.</p> <p>NOTE For building THINAPP packages, ensure that your system contains VMware ThinApp (5.0.0/5.0.1/5.1.0/5.1.1/5.2.0) installed.</p> <p>NOTE For publishing MSI packages to Microsoft SCCM 2007 (SP1/SP2/R1/R2) or SCCM 2012 (SP1/SP2/R2/R2 SP1) server, ensure that your system contains Microsoft Management Framework 3.0 and Windows Remote Management (WinRM) service enabled.</p>
Privileges	Administrative privileges on the system.

1.4 Hardware Requirements

Ensure that a target system fulfils the minimum hardware conditions:

Processor	<p>32-bit (x86) or 64-bit (x64) processor at 2 GHz or greater</p> <p>NOTE To repackage 64-bit applications or create 64-bit App-V packages, use PACE Suite on a 64-bit Windows operating system.</p>
RAM	2 GB
Hard drive free space	<p>1 GB</p> <p>NOTE Additional storage is required for your projects and packages and depends on their size and quantity.</p>
Display	1280 x 768 resolution or higher.



2 Release Notes

2.1 About This Release

Meet our redesigned and improved files, shortcuts and registry management in **MSI Generator** of **PACE Suite 5.2**. This new release extends the beloved user experience from the Files, Shortcuts and Registry tabs of MSI Editor to MSI Generator. Unique design and approach make it much easier to manage project resources for both newcomers and packaging ninjas. New Tree List view and Properties windows provide the maximum information about each selected entry, brings highlighting and various filters and makes managing these resources faster and easier.

We have of course more in store for you. In MSI Generator, we managed to boost the speed of our tool once again. We have also implemented a number of feature requests that you, your users, have been sending our way.

Reported and found bugs have been evacuated from the product. Enjoy the new PACE Suite 5.2!



2.2 New features of MSI Generator

2.2.1 New Files tab

Here are some highlights of the new Files tab:

- Enjoy a user-friendly tree list view
- Navigate faster with a single view for both included and excluded items
- Highlighting of the excluded items
- Leverage different view filters
- Enjoy improved permission management
- Add system folders
- Import files together with extracting COM information
- Easily move, rename and delete resources

Enjoy a user-friendly tree list in the **Files** tab and find both included and excluded resources in a single view with description of each item's type, size and state. This view makes it easier to see all captured and manually added files of a folder, especially for the deep folders tree. The highlighting rules and filters helps you to navigate faaster and easily find the necessary resources. Use **Expand all** to see all files and folders that is in your project.

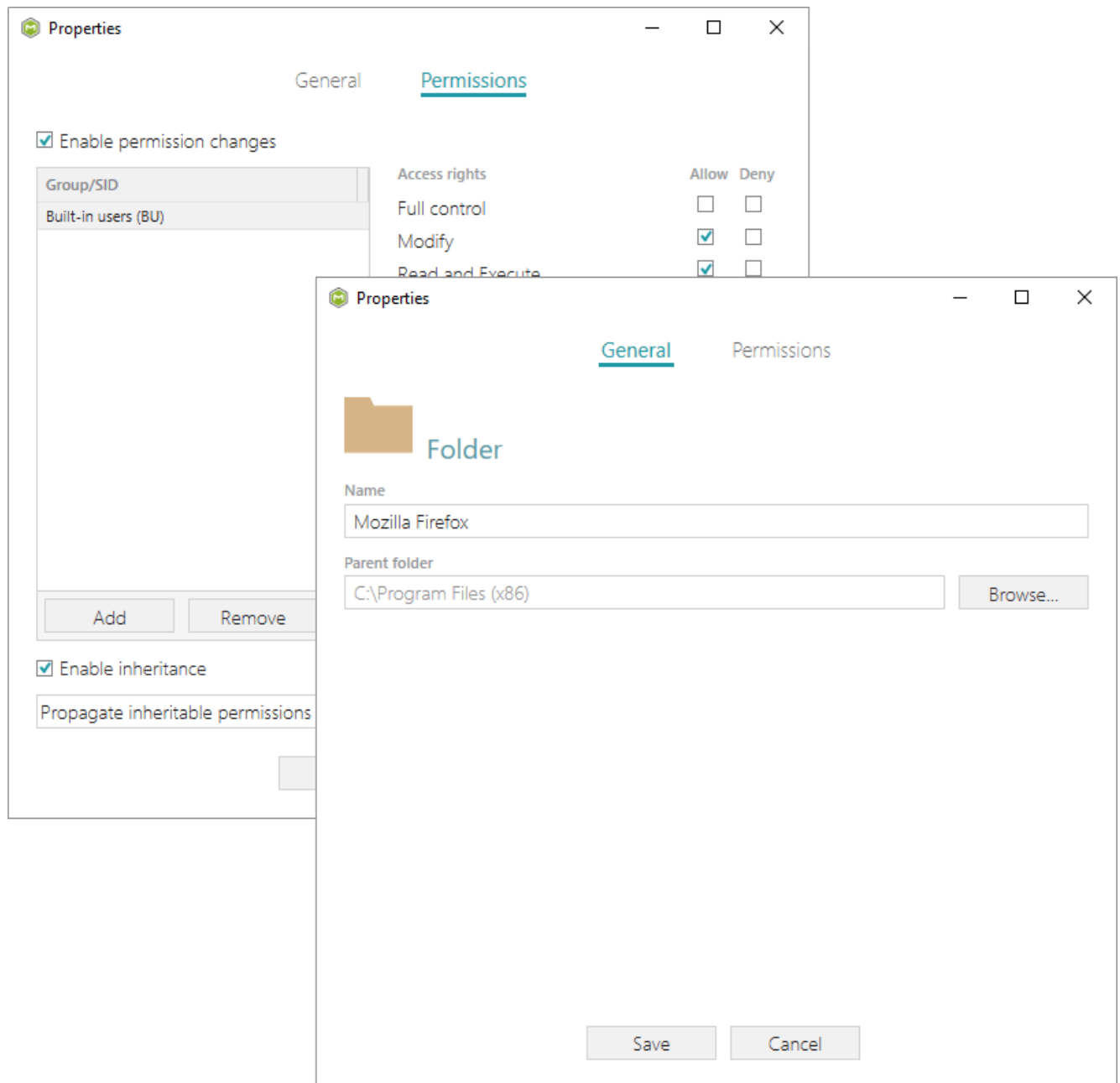
Files and folder

Included: 112 files (158.9 MB) Filter Collapse all

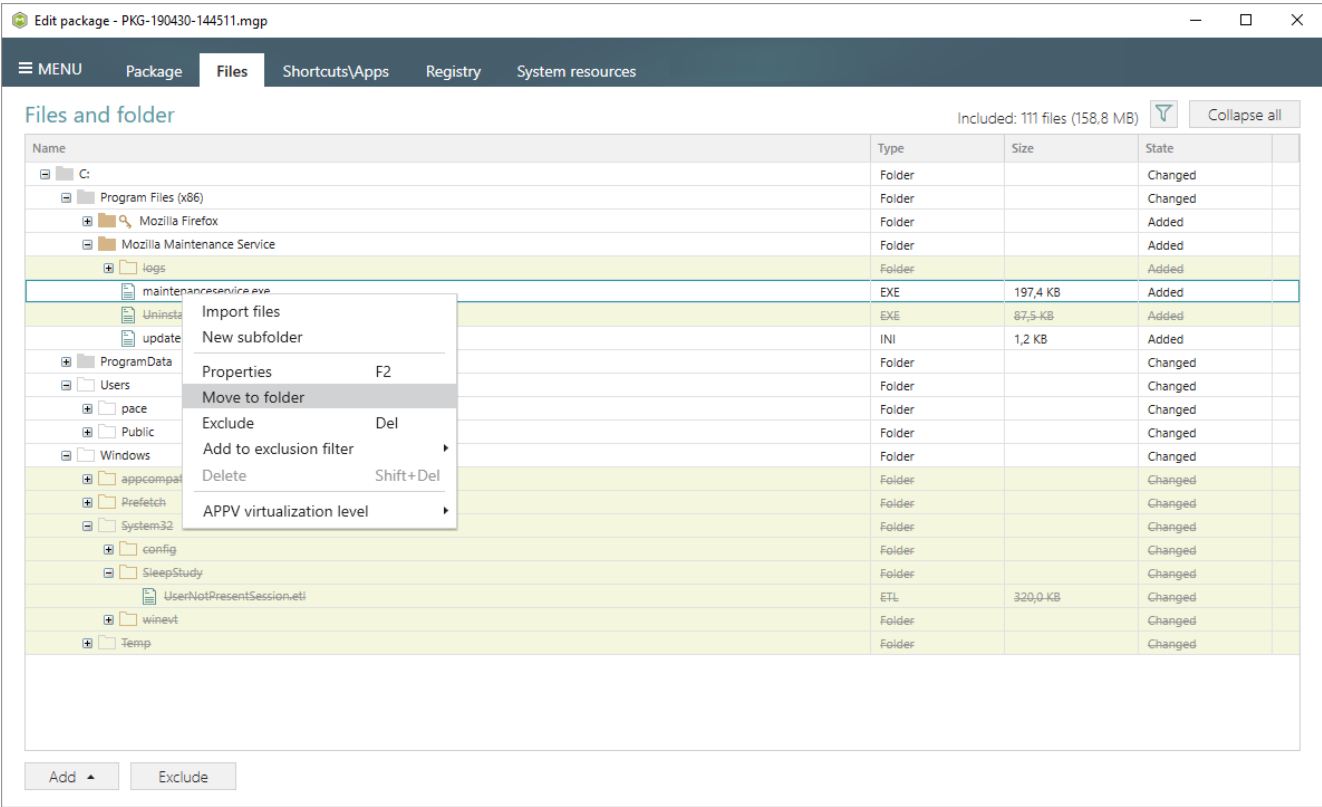
Name	Type	Size	State
C:	Folder		Changed
Program Files (x86)	Folder		Changed
Mozilla Firefox	Folder		Added
Mozilla Maintenance Service	Folder		Added
logs	Folder		Added
maintenanceservice.exe	EXE	197,4 KB	Added
Uninstall.exe	EXE	87,5 KB	Added
updater.ini	INI	1,2 KB	Added
ProgramData	Folder		Changed
Microsoft	Folder		Changed
Users	Folder		Changed
pace	Folder		Changed
Public	Folder		Changed
Windows	Folder		Changed
appcompat	Folder		Changed
Prefetch	Folder		Changed
System32	Folder		Changed
config	Folder		Changed
SleepStudy	Folder		Changed
UserNotPresentSession.etl	ETL	320,0 KB	Changed
winenvt	Folder		Changed
Temp	Folder		Changed

Add Exclude

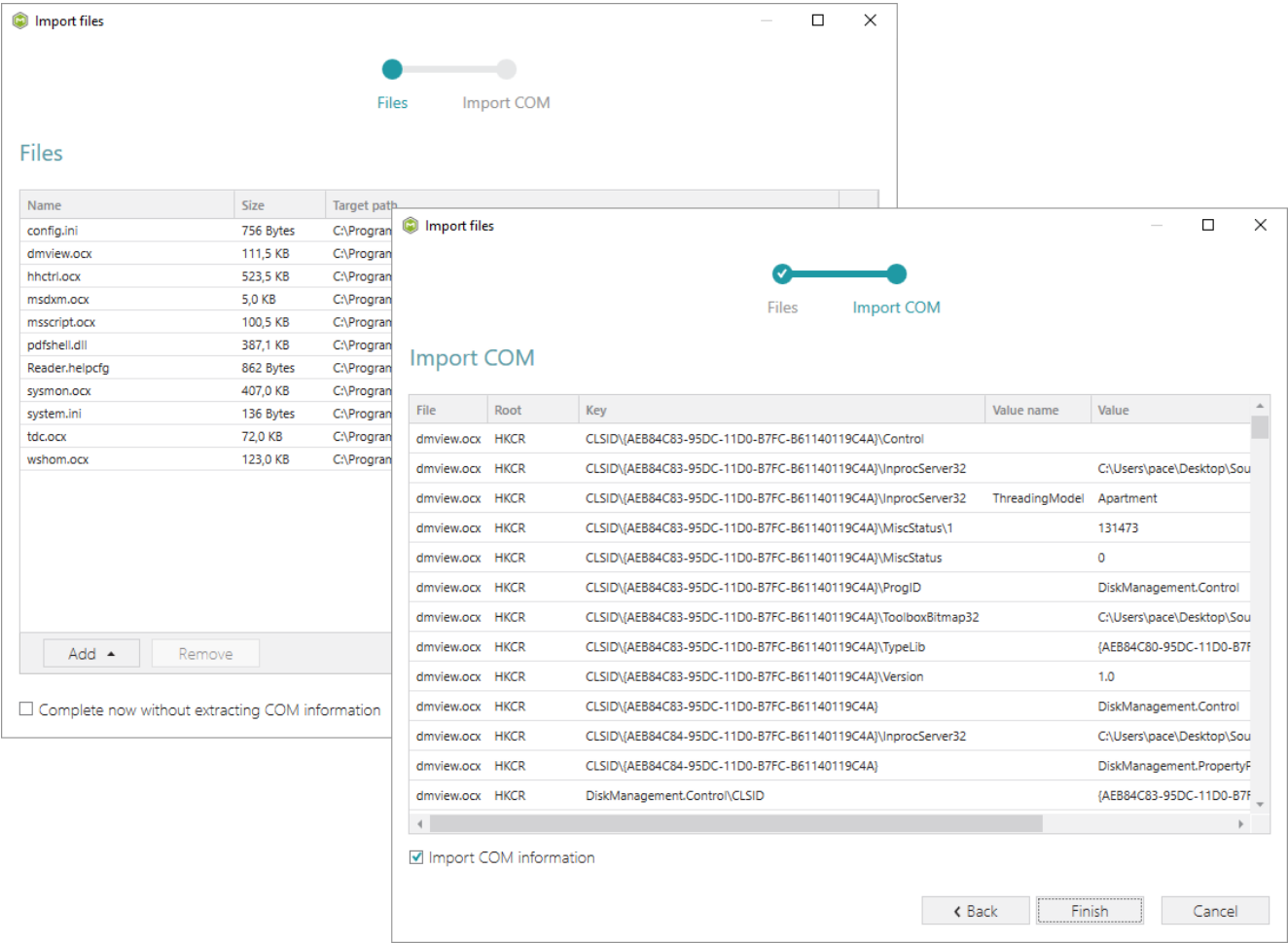
Edit name, parent folder and manage permissions of the captured and manually added project files and folders using the new **Properties** dialog.



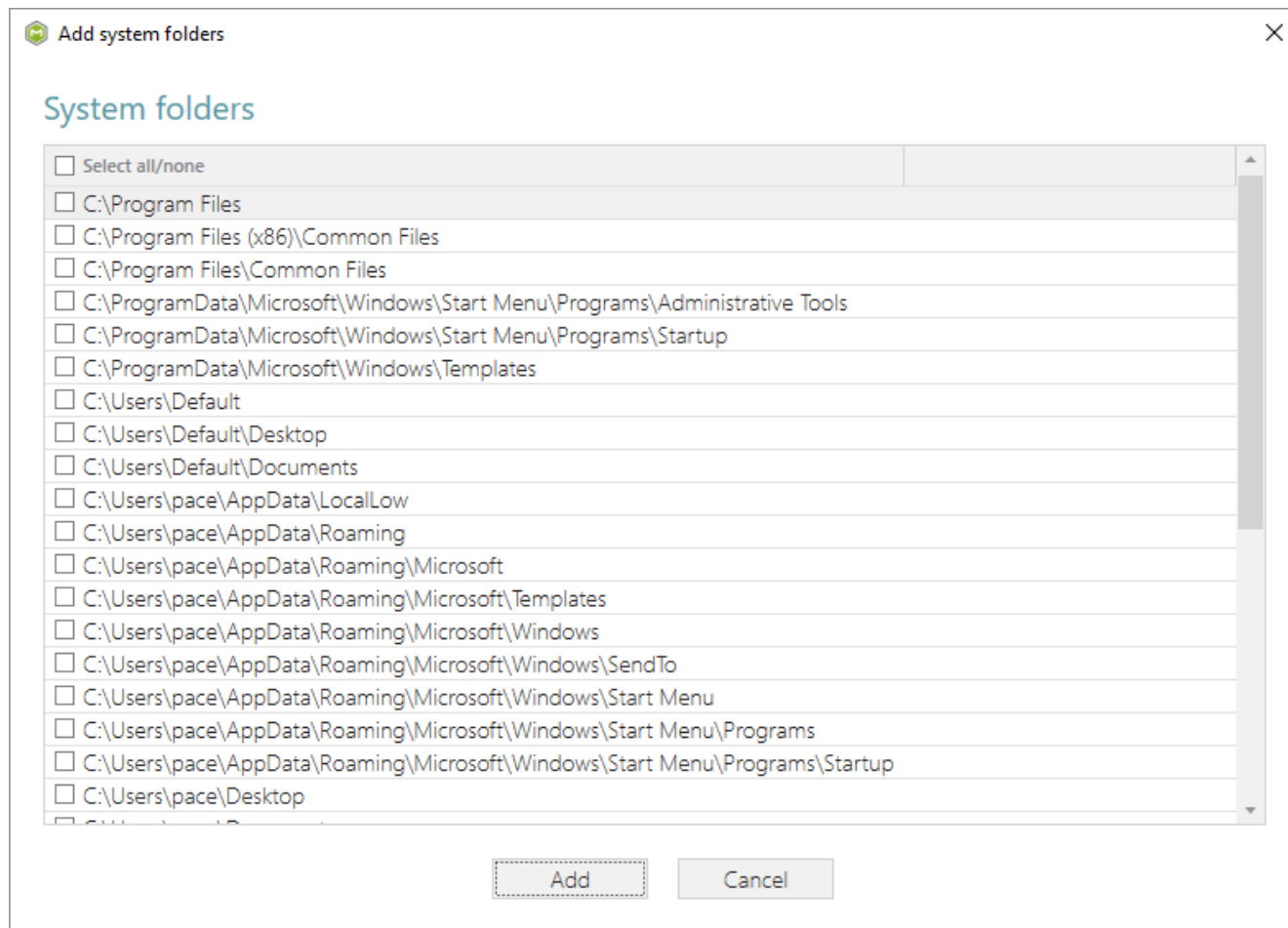
Easily move files/folders using the context menu – just select **Move to folder** from the context menu and then choose a new destination folder from the folders tree.



The improved **Import files** function is reborn as a smart Wizard, which displays details of the selected files and extracts the COM information from them on-the-fly.



Add system folders to the project by simply selecting the required ones from the list.



Finally, delete the unnecessary resources from the project. Note that deletion is available only for the excluded resources and deletes the selected resource not only from the MGP project but from

the project folder on the file system as well.

Edit package - PKG-190430-144511.mgp

MENU

Package

Files

Shortcuts\Apps

Registry

System resources

Files and folder

Included: 111 files (158.8 MB)

Collapse all

Name	Type	Size	State
C:	Folder		Changed
Program Files (x86)	Folder		Changed
Mozilla Firefox	Folder		Added
Mozilla Maintenance Service	Folder		Added
logs	Folder		Added
maintenanceservice.exe	EXE	197,4 KB	Added
Uninstall.exe	EXE	87,5-KB	Added
updater.ini	INI	1,2 KB	Added
ProgramData	Folder		Changed
Users	Folder		Changed
pace	Folder		Changed
Public	Folder		Changed
Windows	Folder		Changed
appcompat	Folder		Changed
Prefetch	Folder		Changed
System32	Folder		Changed
config	Folder		Changed
SleepStudy	Folder		Changed
UserA	ETL	320,0-KB	Changed
winevt	Folder		Changed
Temp	Folder		Changed

Import files

New subfolder

PropertiesF2

Move to folder

IncludeIns

Add to exclusion filter

DeleteShift+Del

APPV virtualization level

Add

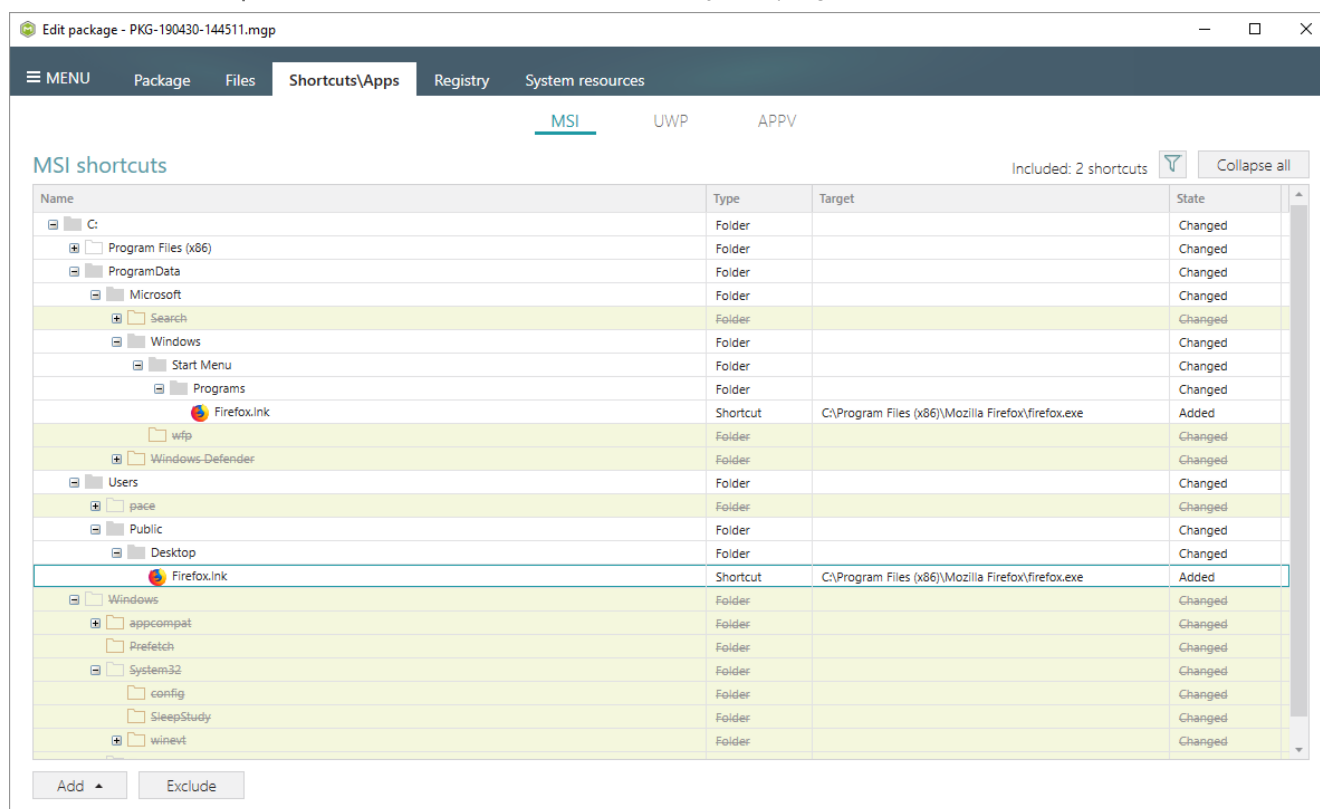
Delete

2.2.2 New Shortcuts\Apps -> MSI tab

Highlights:

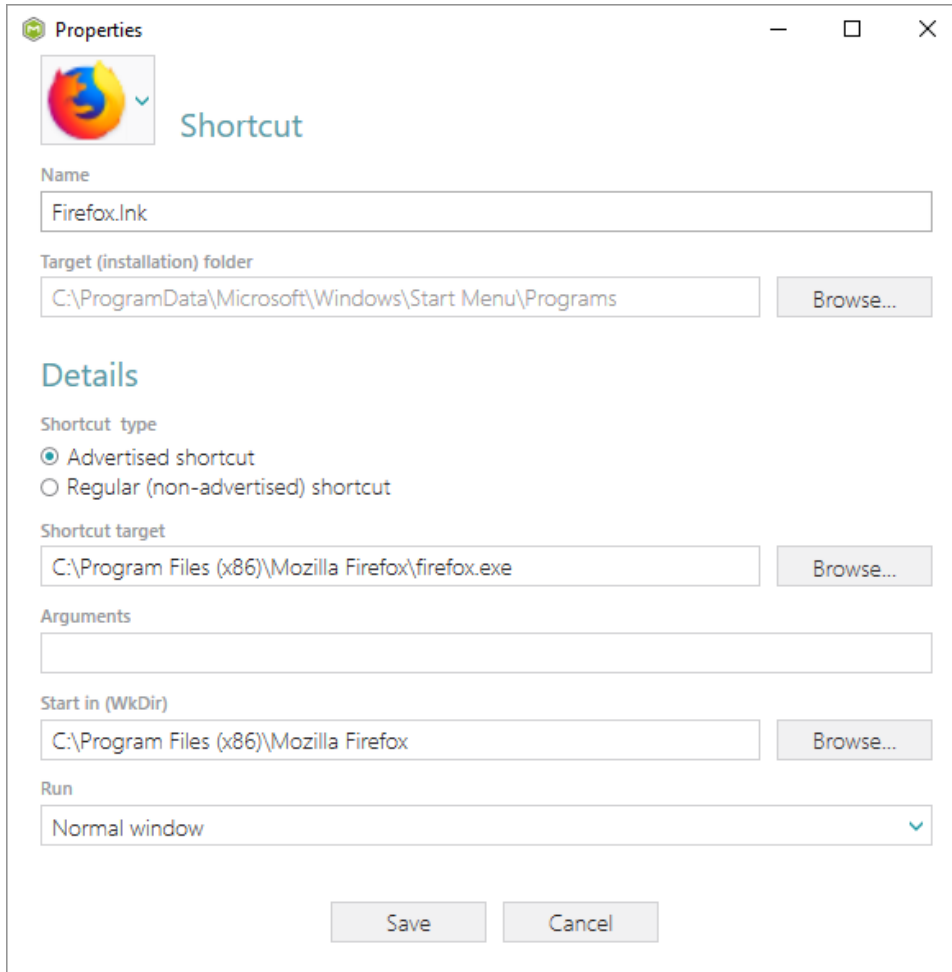
- User-friendly tree list view
- Single view for both included and excluded items
- Highlighting of the excluded items
- Different view filters
- Adding subfolders and system folders
- Moving, renaming, deleting shortcuts

We have added this nice tree list view to the **Shortcuts\Apps -> MSI** tab as well and find both included and excluded folders and MSI shortcuts in a single view with the description of the item type, shortcut target and state. This view makes it easier to see all captured and manually added MSI shortcuts and their details. The highlighting rules and filters helps you to find the necessary resources. Use **Expand all** to see all MSI shortcuts of your project.

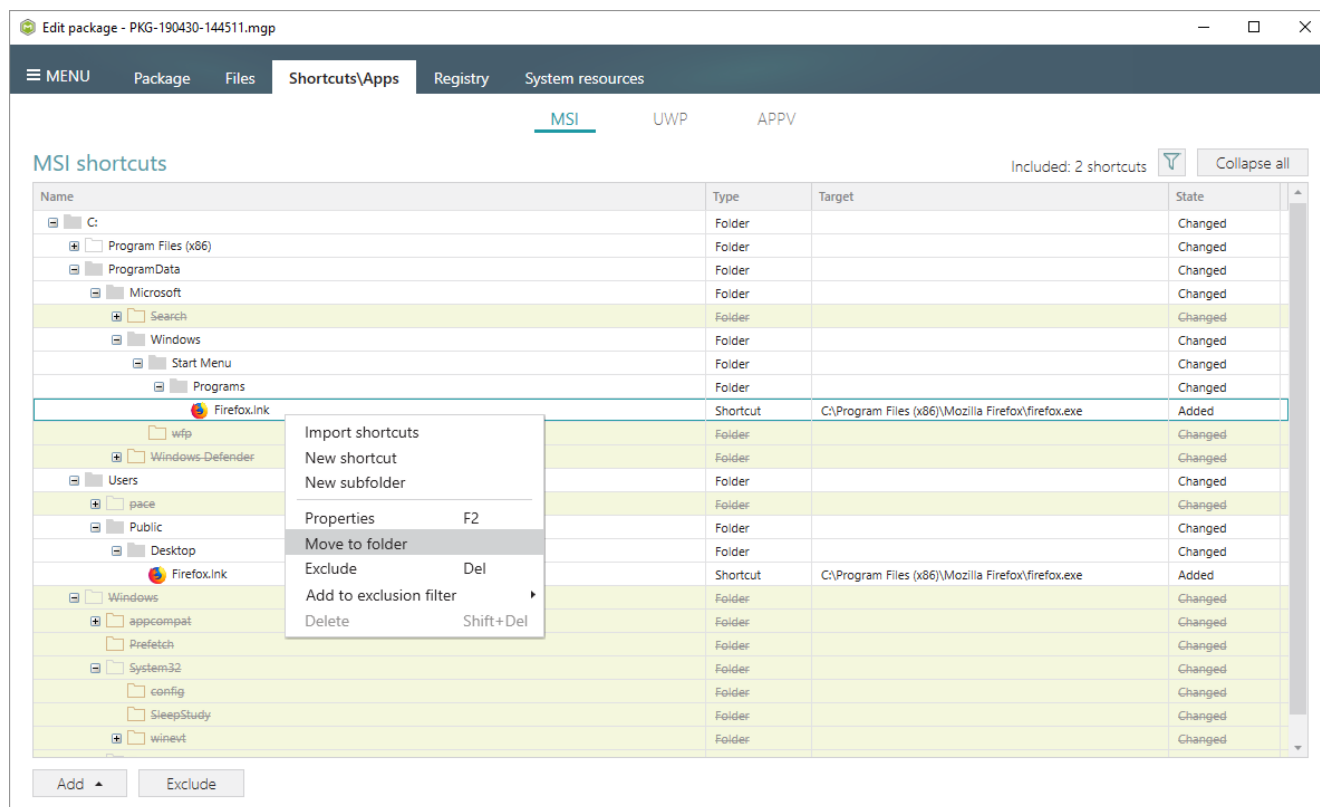


Edit name, installation folder, shortcut type, target and other shortcuts properties using the new **Properties** dialog. Also, you can select a new shortcut icon either from the existing project icons or

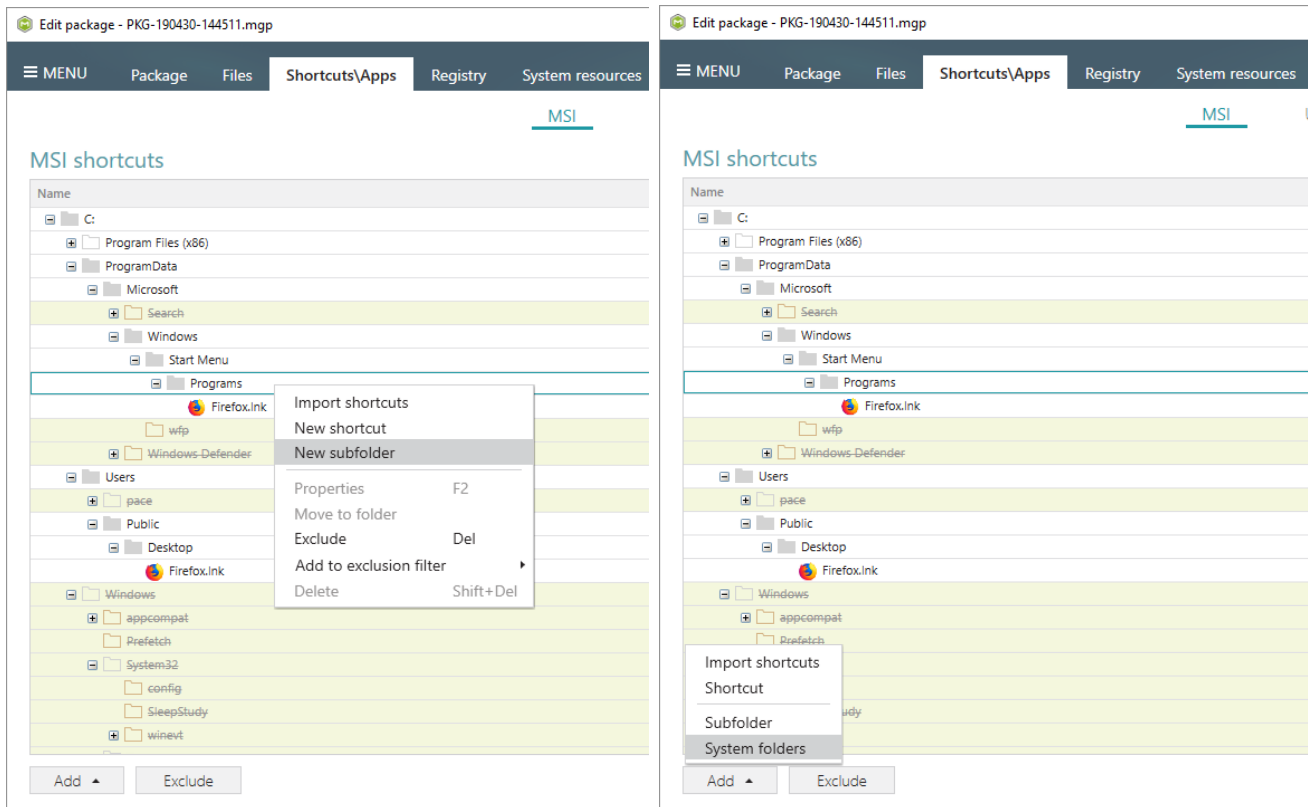
import new one from the file.



Easily move shortcuts using the context menu – just select **Move to folder** from the context menu and then choose a new destination folder from the folders tree.

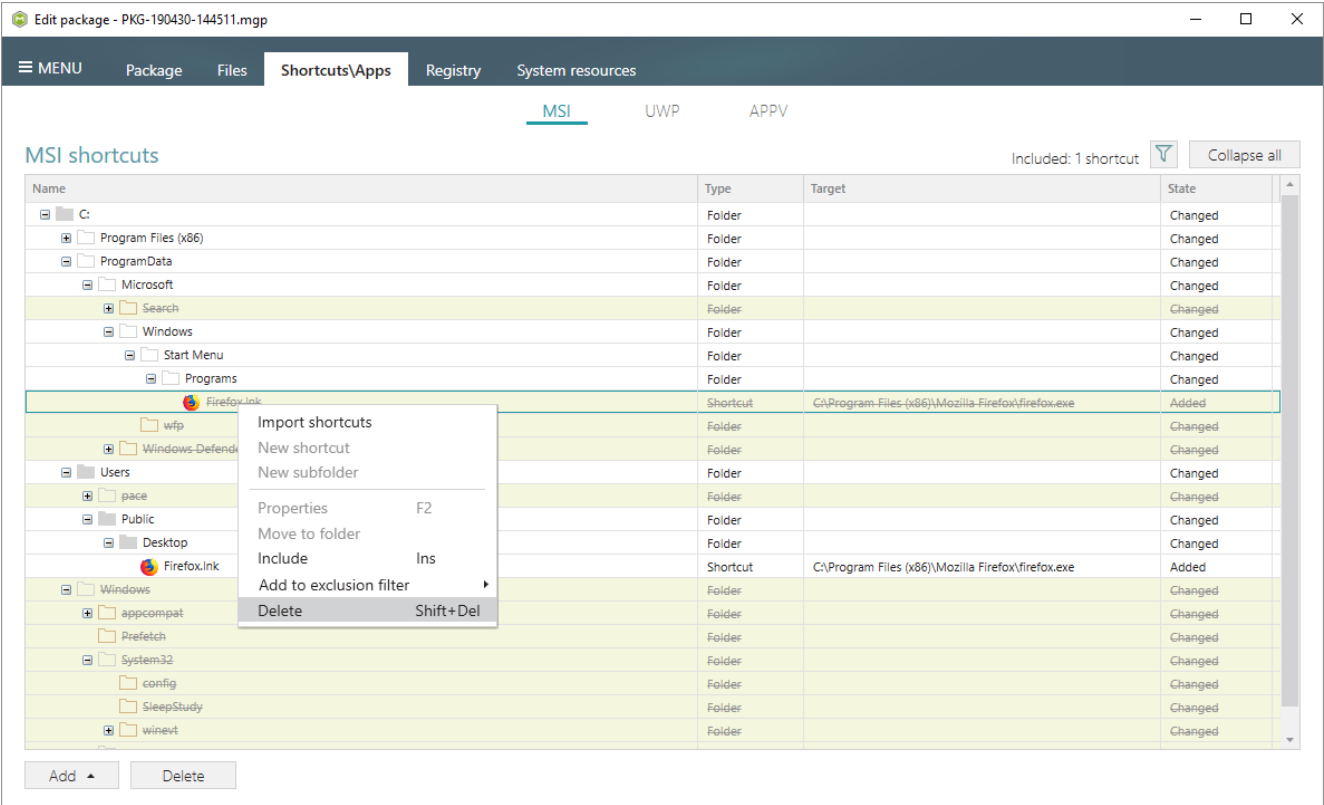


Right on the **Shortcuts\Apps** -> **MSI** tab you can add new subfolder and system folders. Note that folder editing is available only from the Files tab.



Finally, delete the unnecessary MSI shortcuts from the project. Note that deletion is available only for the excluded resources and deletes the selected resource not only from the MGP project but

from the project folder on the file system as well.



2.2.3 New Registry tab

Highlights:

- User-friendly tree list view
- Single view for both included and excluded items
- Highlighting of the excluded items
- Different view filters
- Permission management
- Adding new registry keys and values
- Moving, renaming, deleting resources

You've guessed it – we added a tree list to the **Registry** tab too! Find both included and excluded resources in a single view with the description of the item type, registry value and state. This view makes it easier to see all captured and manually added, imported registry values of a key, especially for the deep registry keys tree. The highlighting rules and filters helps you to find the necessary resources. Use **Expand all** to see all registry values that is in your project.

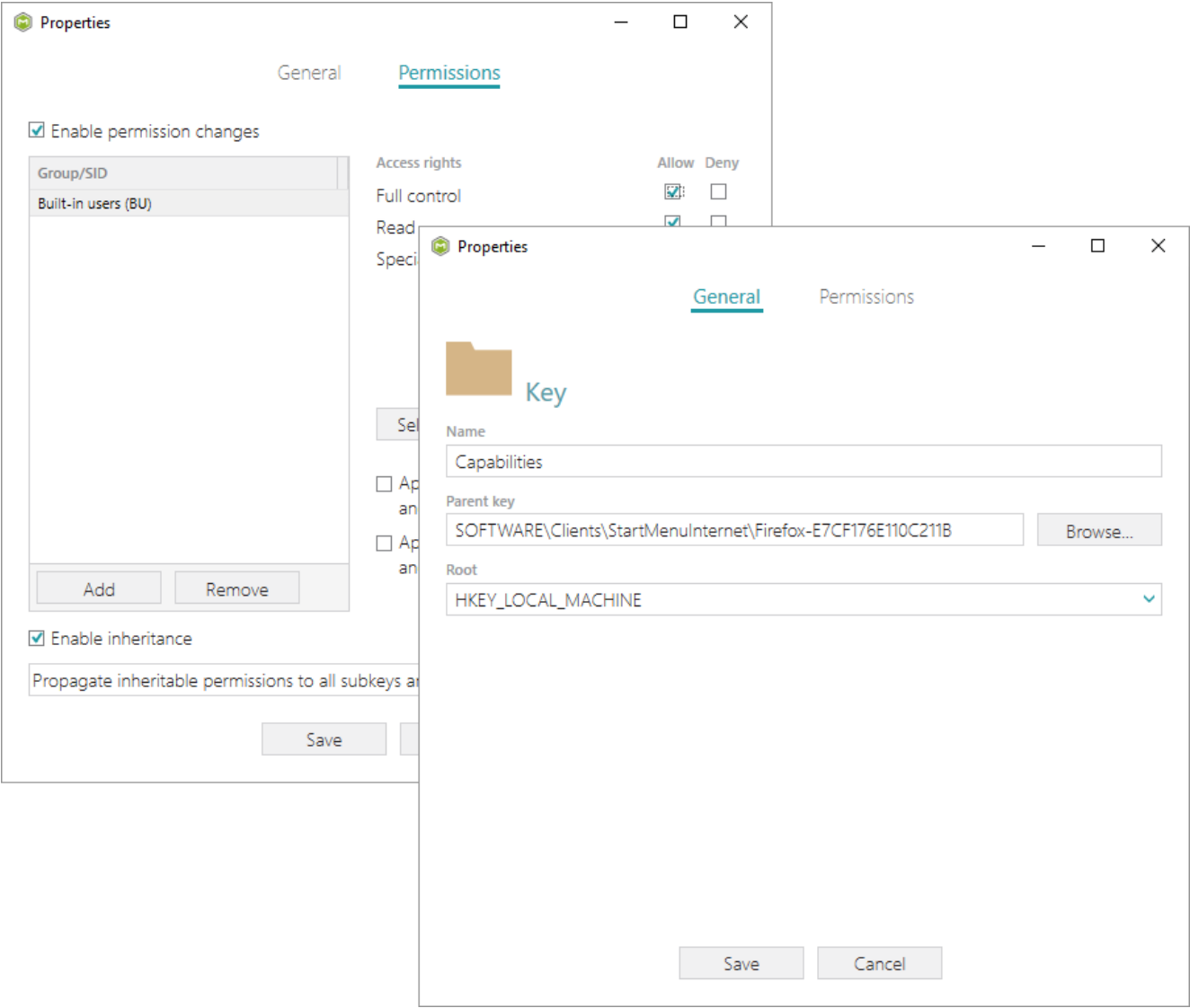
Registry

Included: 113 values Filter Collapse all

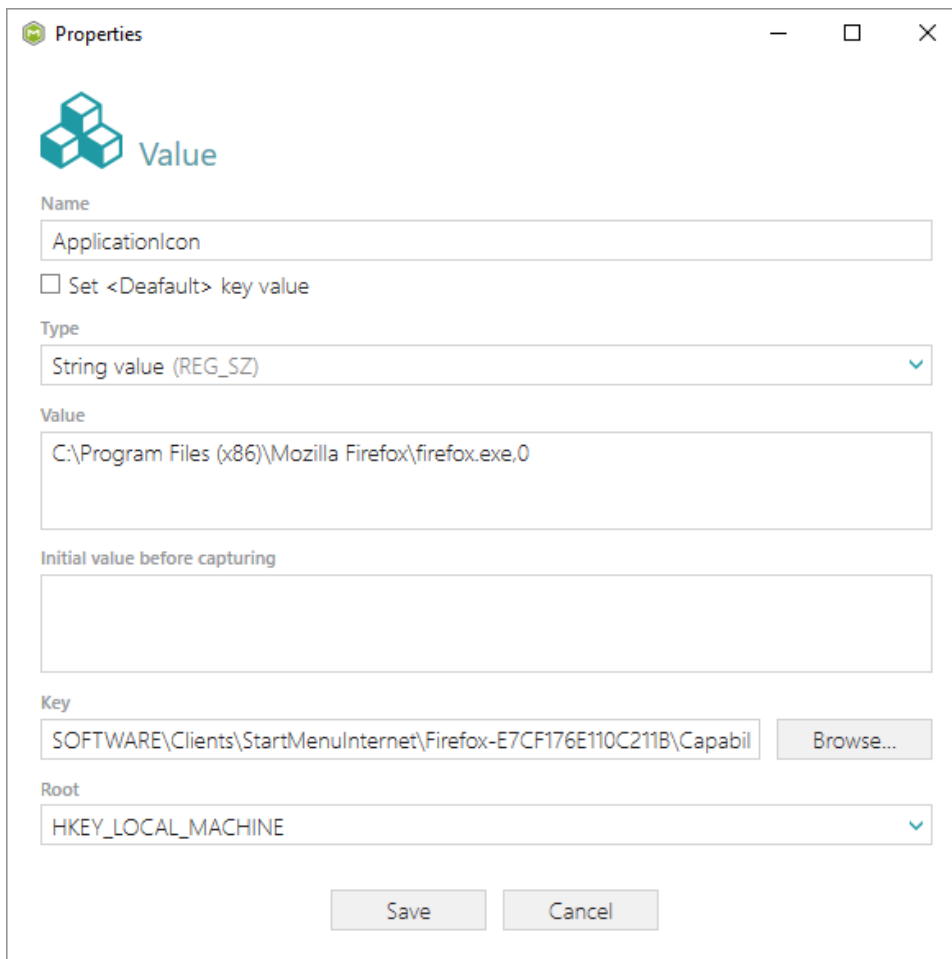
Name	Type	Value	State
HKEY_CLASSES_ROOT	System hive		
HKEY_CURRENT_USER	System hive		
Software	Key		Changed
Classes	Key		Changed
Microsoft	Key		Changed
HKEY_LOCAL_MACHINE	System hive		
SOFTWARE	Key		Changed
Classes	Key		Changed
Clients	Key		Changed
Microsoft	Key		Changed
Mozilla	Key		Added
Policies	Key		Changed
RegisteredApplications	Key		Changed
WOW6432Node	Key		Changed
System	Key		Changed
CurrentControlSet	Key		Changed
HKEY_USERS	System hive		
DEFAULT	Key		Changed

Add Exclude

For the registry keys, you can edit its name, parent key, root (hive) and set permissions.



For the registry values, you can edit its name, type, value, key and hive. Also, here you can find the initial registry value for those values, which were changed during the capturing.

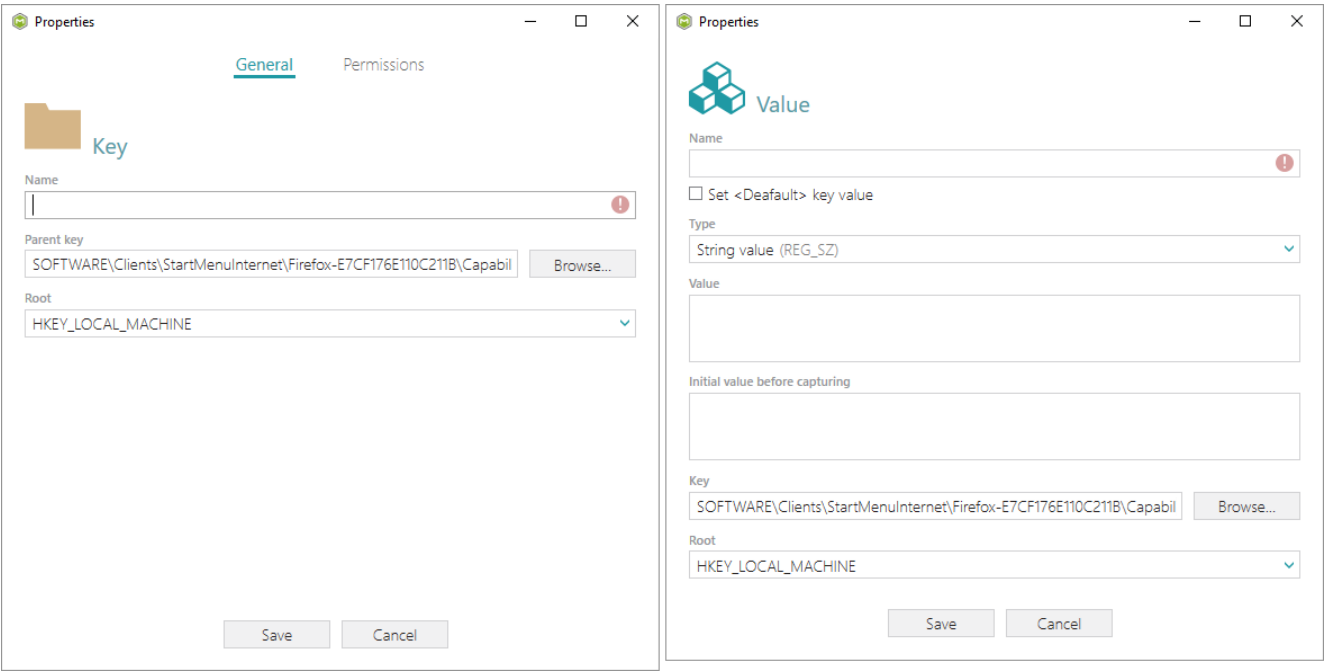


The screenshot shows a 'Properties' dialog box for a registry value. The title bar says 'Properties'. Inside, there's a 'Value' icon (three cubes) and the word 'Value'. The fields are as follows:

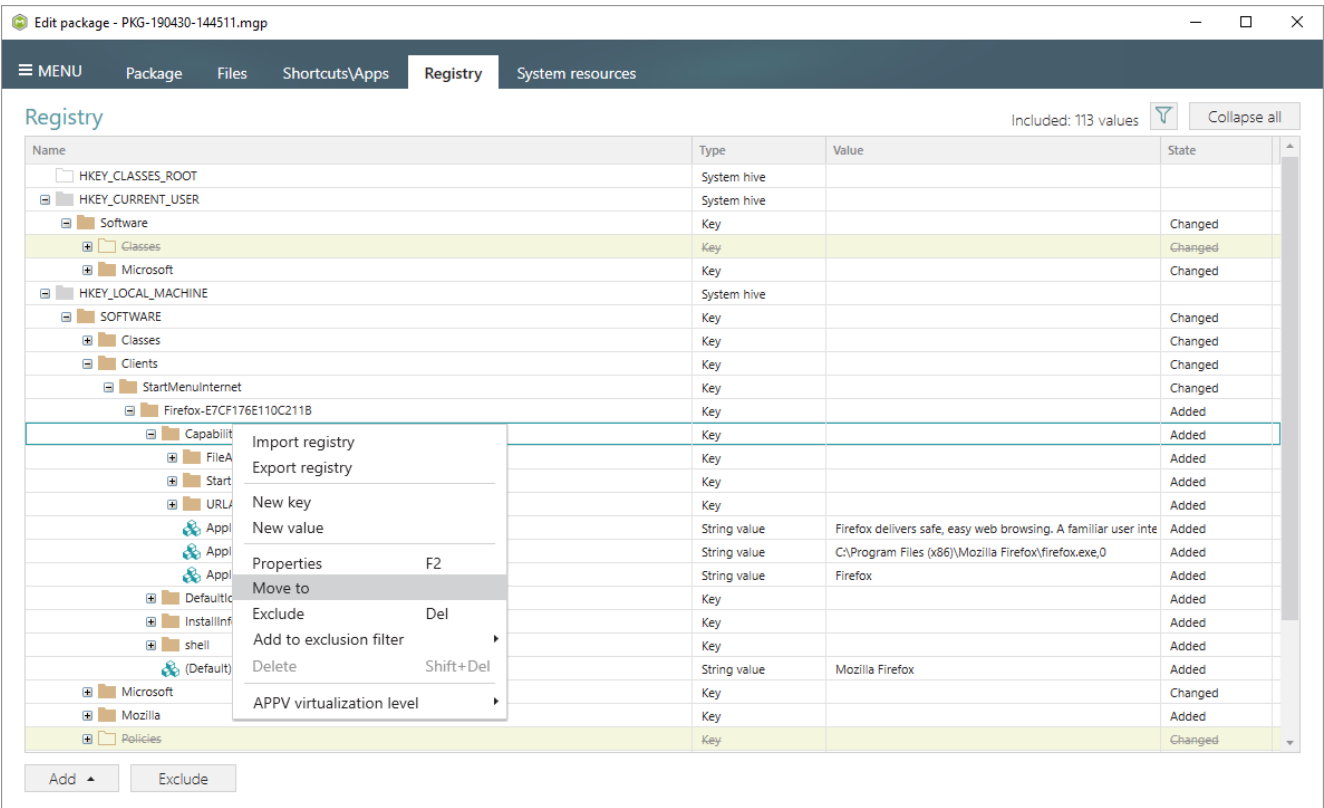
- Name:** A text box containing 'ApplicationIcon'.
- Set <Default> key value:** An unchecked checkbox.
- Type:** A dropdown menu showing 'String value (REG_SZ)' with a blue arrow.
- Value:** A text box containing 'C:\Program Files (x86)\Mozilla Firefox\firefox.exe,0'.
- Initial value before capturing:** An empty text box.
- Key:** A text box containing 'SOFTWARE\Clients\StartMenuInternet\Firefox-E7CF176E110C211B\Capabil' and a 'Browse...' button.
- Root:** A dropdown menu showing 'HKEY_LOCAL_MACHINE' with a blue arrow.
- Buttons:** 'Save' and 'Cancel' buttons at the bottom.

Create a new registry keys and values using the context menu. Just select a place where you want to add a new item and select the respective function. Fill-in the required fields of the **Properties**

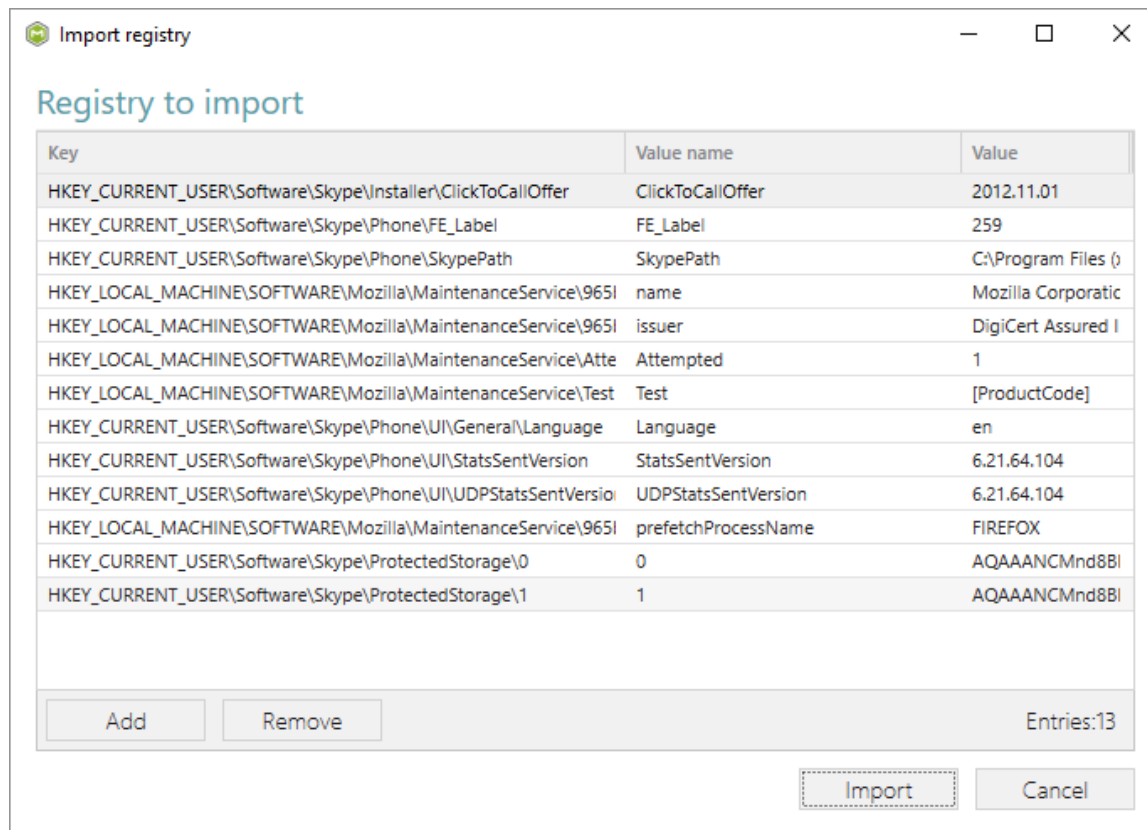
dialog to get a new key or value.



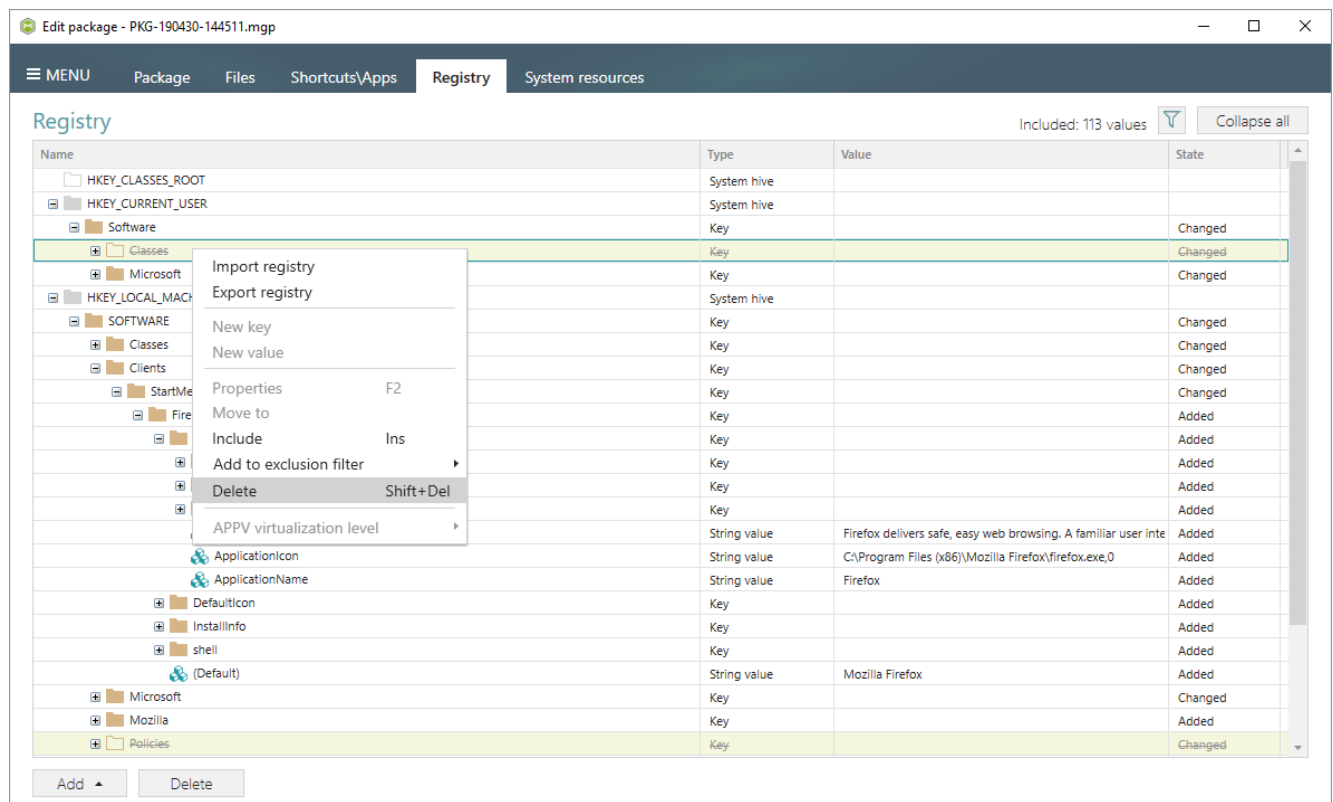
Easily move registry keys/values using the context menu – just select **Move to** from the context menu and then choose a new destination key from the registry keys tree.



The improved **Import registry** function parses the selected REG files and displays registry values that will be imported. You can review parsed data and remove unnecessary entries.

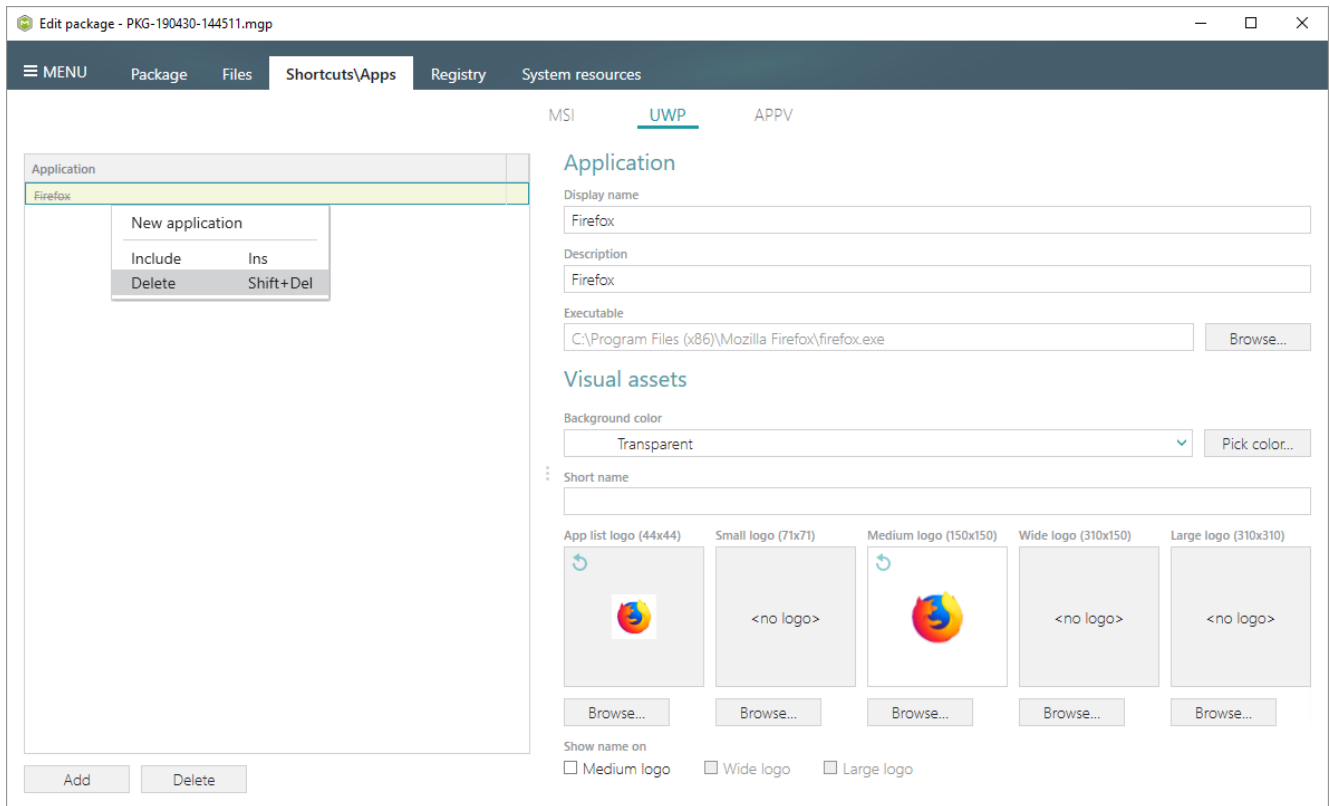


Finally, delete the unnecessary registry keys and values from the project using the context menu.



2.2.4 APPV and UWP app deletion

Delete the unnecessary UWP and APPV apps and their linked data using the context menu. Note that deletion is available only for the excluded resources.





2.3 Other Improvements

2.3.1 MSI Generator

- Improved speed of building large MSI packages.
- Ability to override the MSI summary information, obtained from the profile, with the custom one.
- Fixed issue with the wrong path to the @ParentDir@ variable in the Quality Assistant.
- Cancellation of the build process responses faster.

2.3.2 MSI Editor

- Automatic integration of the missing necessary standard actions into the opened MSI package on saving.





3 Release History

- [PACE Suite 5.1](#)
- [PACE Suite 5.0](#)
- [PACE Suite 4.7](#)
- [PACE Suite 4.6](#)
- [PACE Suite 4.5](#)
- [PACE Suite 4.4](#)
- [PACE Suite 4.3](#)
- [PACE Suite 4.2](#)
- [PACE Suite 4.1](#)
- [PACE Suite 4.0](#)
- [PACE Suite 3.5.5](#)
- [PACE Suite 3.5](#)
- [PACE Suite 3.4.2](#)
- [PACE Suite 3.4.1](#)
- [PACE Suite 3.4](#)
- [PACE Suite 3.3 – 3.3.1](#)

