



---

# RELEASE NOTES

---

PACE Suite 5.1





# Table of Contents

1	PACE Suite Overview .....	3
1.1	Key Advantages .....	3
1.2	PACE Components .....	3
1.3	System Requirements.....	4
1.4	Hardware Requirements.....	4
2	Release Notes .....	5
2.1	About This Release.....	5
2.2	New features.....	6
2.2.1	MSIX support.....	6
2.2.2	Merge Module (MSM) creation.....	8
2.2.3	Manage package upgrades .....	9
2.2.4	Control empty folders creation and removal.....	9
2.2.5	Apps & Features appearance .....	11
2.2.6	New Package Summary Tab.....	12
2.3	Other Improvements .....	13
2.3.1	Docu Generator.....	13
2.3.2	MSI Editor.....	13
2.3.3	MSI Generator.....	13
3	Release History.....	14



# 1 PACE Suite Overview

PACE Suite is an advanced and fast software packaging tool with an intuitive user interface and set of features providing (re)packaging in Windows Installer, UWP (MSIX/APPX) and various virtualized formats.

## 1.1 Key Advantages

- Out-of-the-box application packaging solution
- Intelligible wizards for running complex user scenarios
- High performance when generating large packages
- Per-user license valid for any number of physical and virtual machines

## 1.2 PACE Components

PACE Suite consists of the following components:



### MSI GENERATOR

- Repackage any existing installation into Windows Installer (MSI), UWP app package (MSIX/APPX) or a virtualization format (Microsoft App-V 5.x, and VMware ThinApp).
- Auto-detection of embedded installers.
- Create a response transform
- Include the excluded files/registry back to a package



### MSI EDITOR

- Manage the contents of an MSI in a tree view
- Import the necessary resources
- Edit and manage Custom Actions and Device Drivers
- Integrate scripts into your package
- Use a smart and advanced MSI database editor, with formatted string autocompleting, Excel-like formula bar, row reference tracking, and more.
- Create patches (MSP) and Merge Modules (MSM)
- Manage permission settings for file system and registry
- Handle upgrades easily – just let MSI Editor know which MSI you want to be upgraded at runtime.
- Publish your applications to Microsoft SCCM.
- See the estimated complexity of an app right away.
- Generate package documentation containing the details about your package and configuration.
- Undo-redo any manipulation and see the changes highlighted in the MSI tables



### DOCU GENERATOR

- Automatically record your on-screen actions into a nice-looking document with screenshots and annotations



## 1.3 System Requirements

Ensure that a target system contains necessary software prerequisites:

OS	Windows 10/8.1/8/7 SP1, Windows Server 2016/2012/2008 R2 SP1  <b>NOTE</b> Building Universal Windows Platform app packages (MSIX/APPX) is available under Windows 10 or Windows Server 2016 and newer.
Middleware	Microsoft .NET Framework 4.7.2 ( <a href="https://dotnet.microsoft.com/download/dotnet-framework-runtime">https://dotnet.microsoft.com/download/dotnet-framework-runtime</a> ) or higher.  <b>NOTE</b> For building THINAPP packages, ensure that your system contains VMware ThinApp (5.0.0/5.0.1/5.1.0/5.1.1/5.2.0) installed.  <b>NOTE</b> For publishing MSI packages to Microsoft SCCM 2007 (SP1/SP2/R1/R2) or SCCM 2012 (SP1/SP2/R2/R2 SP1) server, ensure that your system contains Microsoft Management Framework 3.0 and Windows Remote Management (WinRM) service enabled.
Privileges	Administrative privileges on the system.

## 1.4 Hardware Requirements

Ensure that a target system fulfils the minimum hardware conditions:

Processor	32-bit (x86) or 64-bit (x64) processor at 2 GHz or greater  <b>NOTE</b> To repack 64-bit applications or create 64-bit App-V packages, use PACE Suite on a 64-bit Windows operating system.
RAM	2 GB
Hard drive free space	1 GB <b>NOTE</b> Additional storage is required for your projects and packages and depends on their size and quantity.
Display	1280 x 768 resolution or higher.



## 2 Release Notes

### 2.1 About This Release

You were really looking forward to it, admit it. Let's jump straight to the big announcement – **PACE Suite now supports creation of MSIX packages** – the newest package format for the Universal Windows Platform (UWP) apps. You can leverage all the benefits of Microsoft's latest format in a familiar, easy-to-use interface of PACE Suite. We have completely changed the concept behind and the design of our APPX/MSIX packages view. You can now declare app capabilities, create main and modification packages, manage supported platforms, create separate packages for each selected processor architecture at once, combine the generated packages into one bundle and more! With new PACE Suite, you can generate the AppInstaller file for the non-Store distribution and automatic update of your UWP packages. All in all, whether MSIX is going to be your go-to standard for all future packages or simply another format you'll occasionally use – easily repackage your source installation into this and all the other major formats from a single, clear, user-friendly UI of MSI Generator.

There are many other new features to explore, of course. Start with **creating Windows Installer Merge Modules** and properly deliver shared resources such as files and registry to the system with your packages. Our new approach in MSI Editor is as simple as it gets – just select components, which you want to export, and the export settings.

In this release, we continue enhancing our **Package Designer** in MSI Editor. It now provides deep control of the upgrade settings, together with an intelligent validation. Also, you can integrate the upgrade of old packages to your new package simply by selecting those old packages.

The new ARP appearance view allows you to control ARP icon, 'Remove', 'Repair', and 'Modify' buttons, support properties such as product, support URLs, contacts and others. Also, you can change the app details, which will be displayed in the app list.

Clean and user-friendly UI is our forte, and we're glad to prove it once again with our new **Package Summary** tab. Find the general information about the app inside this package, main package IDs such as product, upgrade and package codes, complexity estimation and the link to the help documentation – all the necessary information displayed beautifully in one place.>

Finally, the **updated Docu Generator** now can save your documents in Word formats (DOC, DOCX) on an absolutely clean system and does not require MS Office libraries. Also, we have updated the document template, and you are free to create a copy and customize it to your needs.

One more thing though – reported and found bugs have been evacuated from the product. Enjoy new PACE Suite 5.1!

## 2.2 New features

### 2.2.1 MSIX support

MSIX is Microsoft's newest packaging format, built to be safe, secure and reliable. It is based on a combination of .msi, .appx, App-V and ClickOnce installation technologies. PACE Suite 5.1 add the support of MSIX, and you can now leverage all the benefits of the latest packaging format in our user-friendly MSI Generator. Here are the highlights of what you can do with MSIX in PACE Suite:

- Select the **MSIX/APPX** output package format
- Create **main** and **modification** packages
- Declare the app **capabilities**
- Select the package **supported platforms**
- Generate packages for all of the specified **processor architectures** at once
- Combine the generated packages into the **bundle**
- Manage the **signature** settings for packages and bundle
- Generate the **AppInstaller** file for the non-Store distribution and auto-update of your app
- **Edit Manifest** manually during the package building
- Control UWP **apps** (like shortcuts) and their **appearance** settings

Using the familiar and intuitive interface of our MSI Generator, you can easily repackage existing Win32 apps to the MSIX. As usual, to create an MSIX package, you can either capture source installation using the Capturing wizard or create a blank project from the scratch and import the necessary resources manually. Switch to the **Package** -> **UWP** tab to manage display and identity properties, app capabilities, package dependencies, supported architectures, bundle and AppInstaller settings. As in previous versions, on the **Shortcuts\Apps** -> **UWP** tab you can select apps (like shortcuts) and their appearance settings.

Edit package - MyPackage.mgp

MENU

Package

Files

Registry

System resources

Permissions

Shortcuts/Apps

Properties

MSI


MST

UWP

APPV

THINAPP

Display properties

Package logo (50x50)  


Display name

Publisher display name

Description

Capabilities

Declare access to the protected user resources.

Dependencies

Specify package type (main/modification) and supported platforms.

App Installer

Generate the App Installer file to distribute and update your application with a single click.

Signature

Sign the generated package/bundle.

Architectures & Bundle

Set the compatible processor architectures and bundle options.

UWP package options

Package format

Application root folder

☐ Interrupt building the package for manual editing the manifest

Project folder

Package identity

Name

Publisher

Version

BUILD LOG

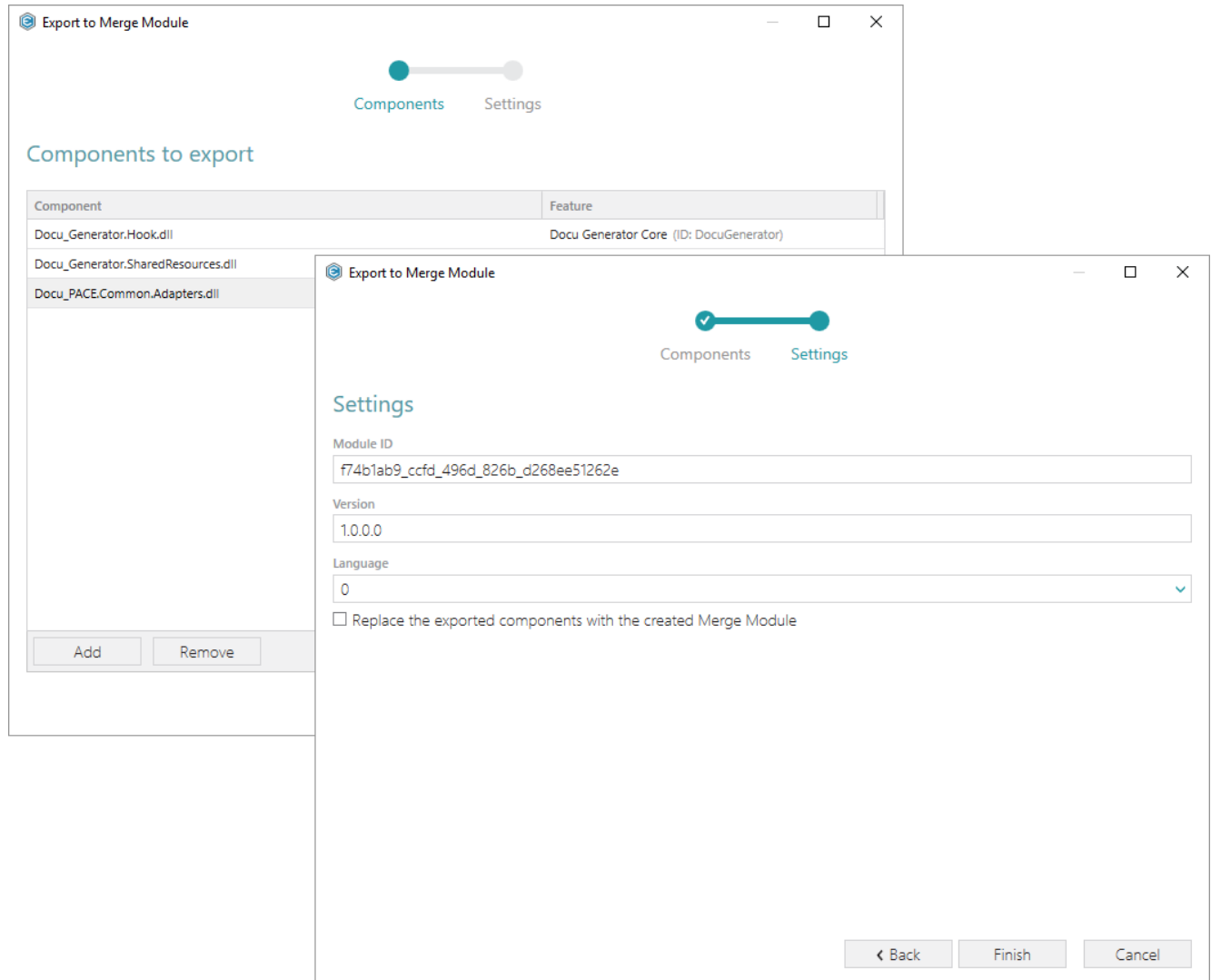
Type	Elapsed	Step
------	---------	------

Elapsed time  
00:00

[Review the UWP application limitations...](#)

## 2.2.2 Merge Module (MSM) creation

Create Windows Installer Merge Modules with new PACE Suite to properly deliver shared resources such as files and registry to the system within your packages. To create an MSM, open your MSI package with MSI Editor, select components, which you want to export to Merge Module, and specify the exporting settings. Also, you can easily replace the exported components with the created Merge Module.



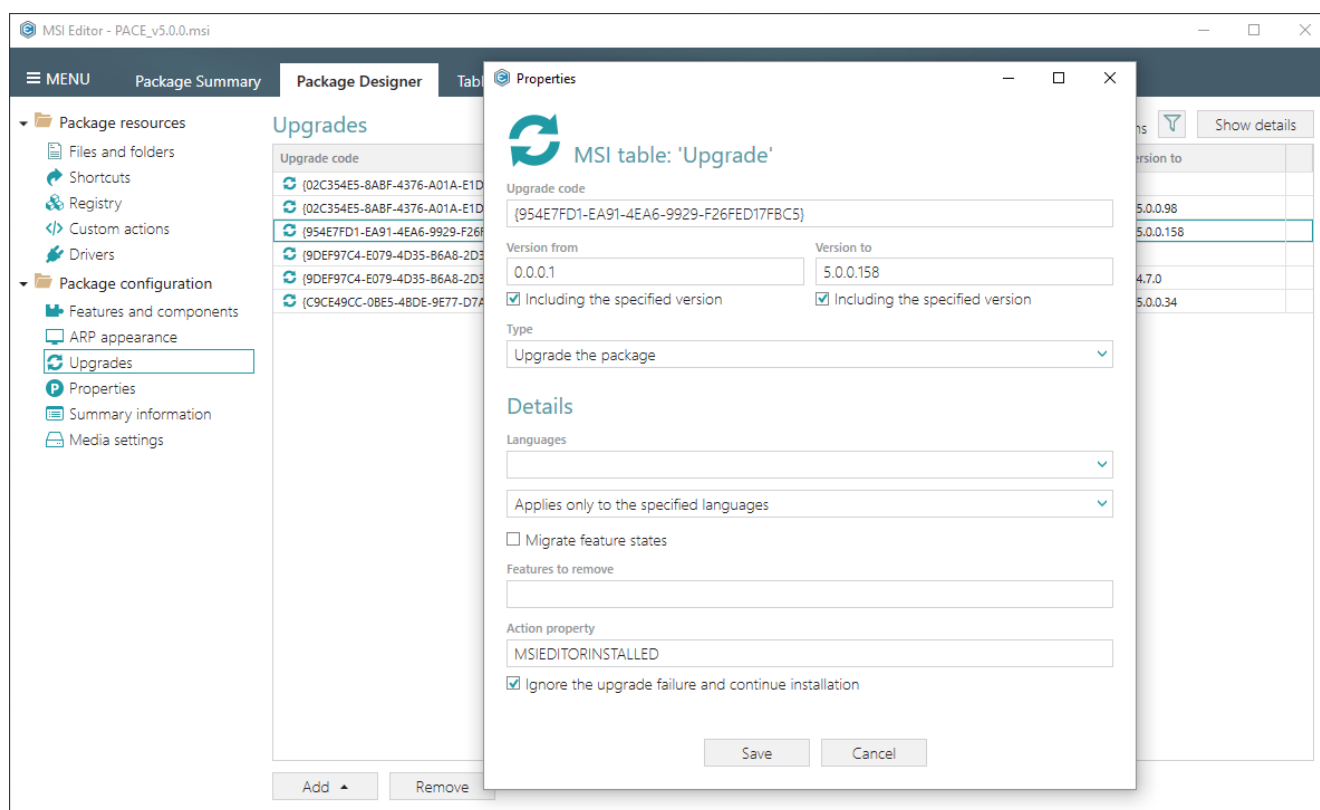


### 2.2.3 Manage package upgrades

The package upgrade is the built-in functionality of the Windows Installer – all you need is to add upgrade codes of the old packages into your new package and specify the upgrade settings.

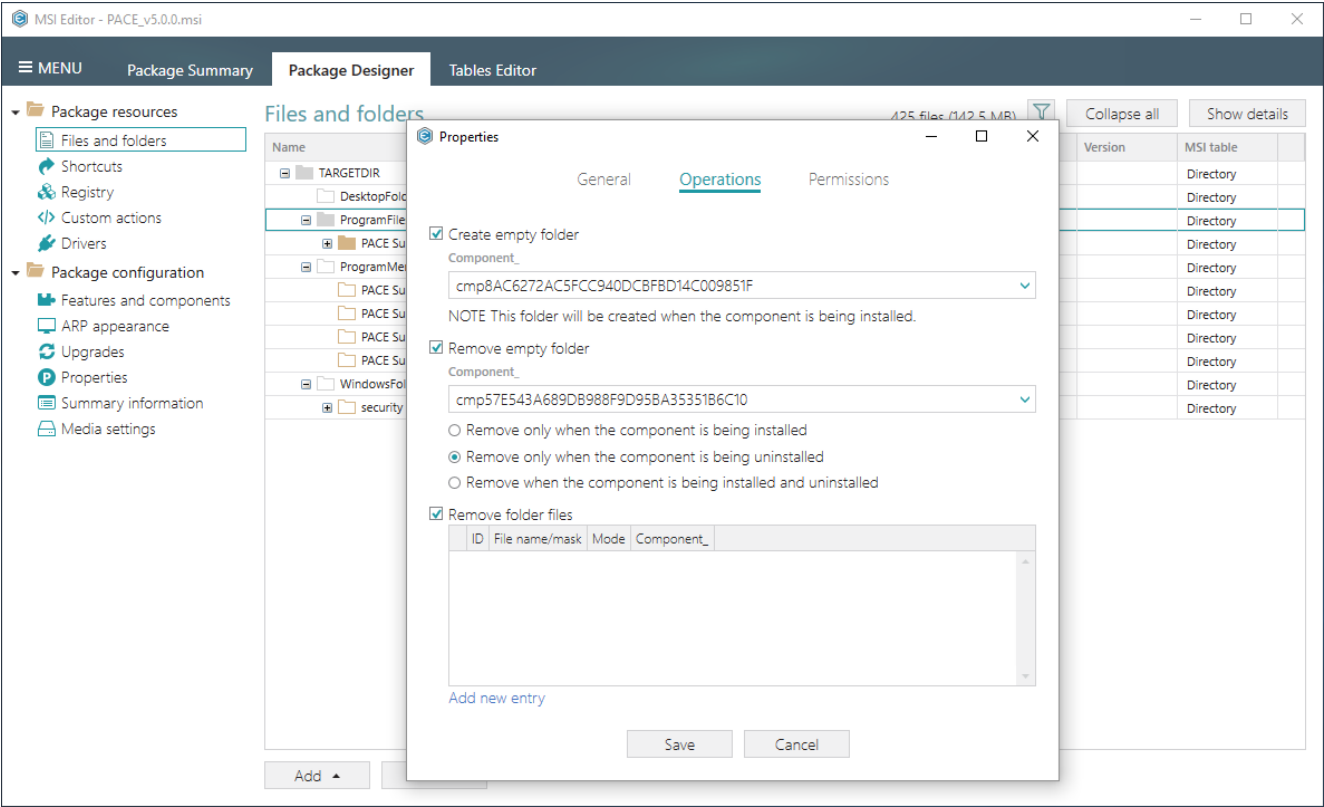
With MSI Editor, you can easily integrate the upgrade of old MSI packages by simply selecting MSI files, which you want to upgrade. MSI Editor will do the rest – import codes, max and min versions, add the necessary properties and standard MSI action for performing the upgrade.

Also, if you do not have MSI files or you want to customize the upgrade, use the **Properties** window to edit every value and setting manually.



### 2.2.4 Control empty folders creation and removal

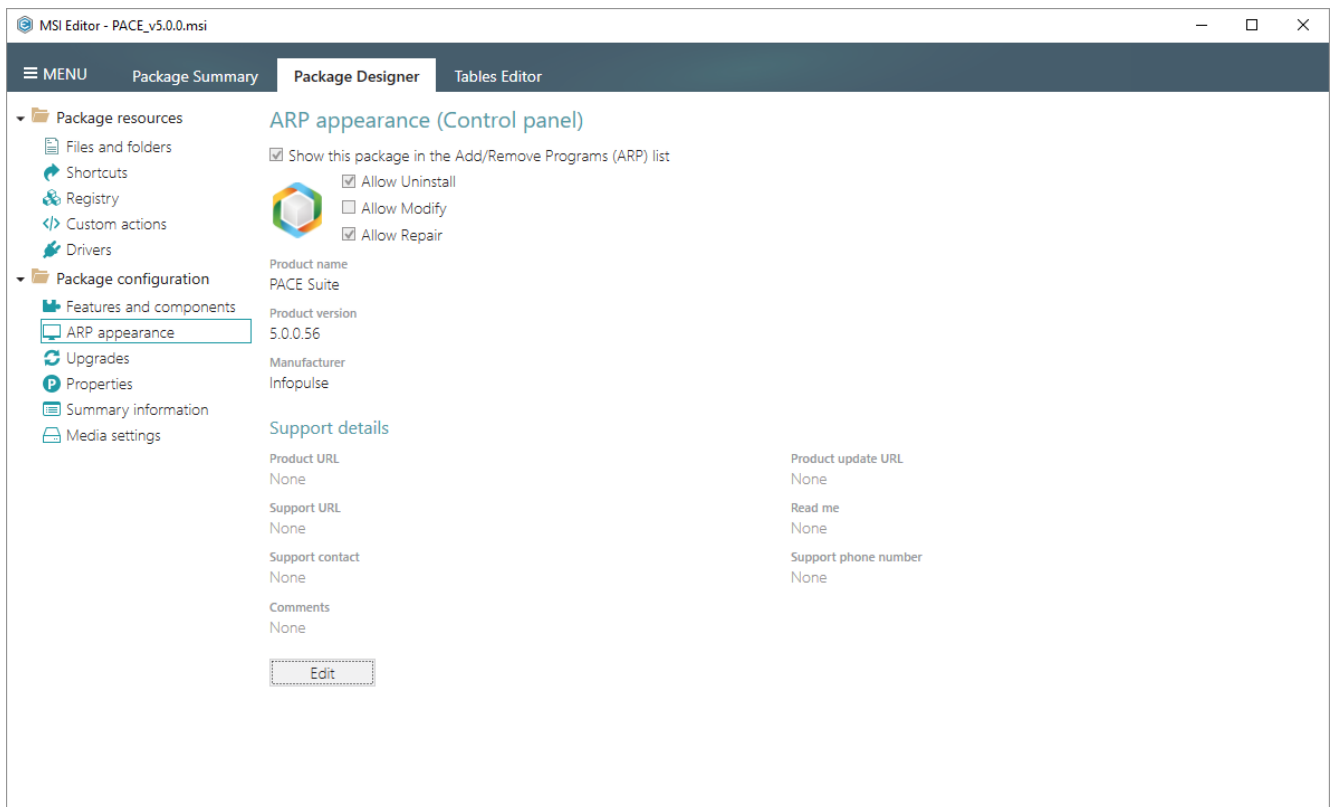
Windows Installer does not create empty folders by default and does not remove folders, which have files or were not created by this package. Now, you can change this behavior for your package in the new **Operations** tab. Find it in the **Properties** window, invoked for the selected folder on the **Package Designer** -> **Files and folders** tab. For empty folder creation and removal, simply tick the respective options; for removing files of this folder, fill-in file name, select a removal mode and linked component.



## 2.2.5 Apps & Features appearance

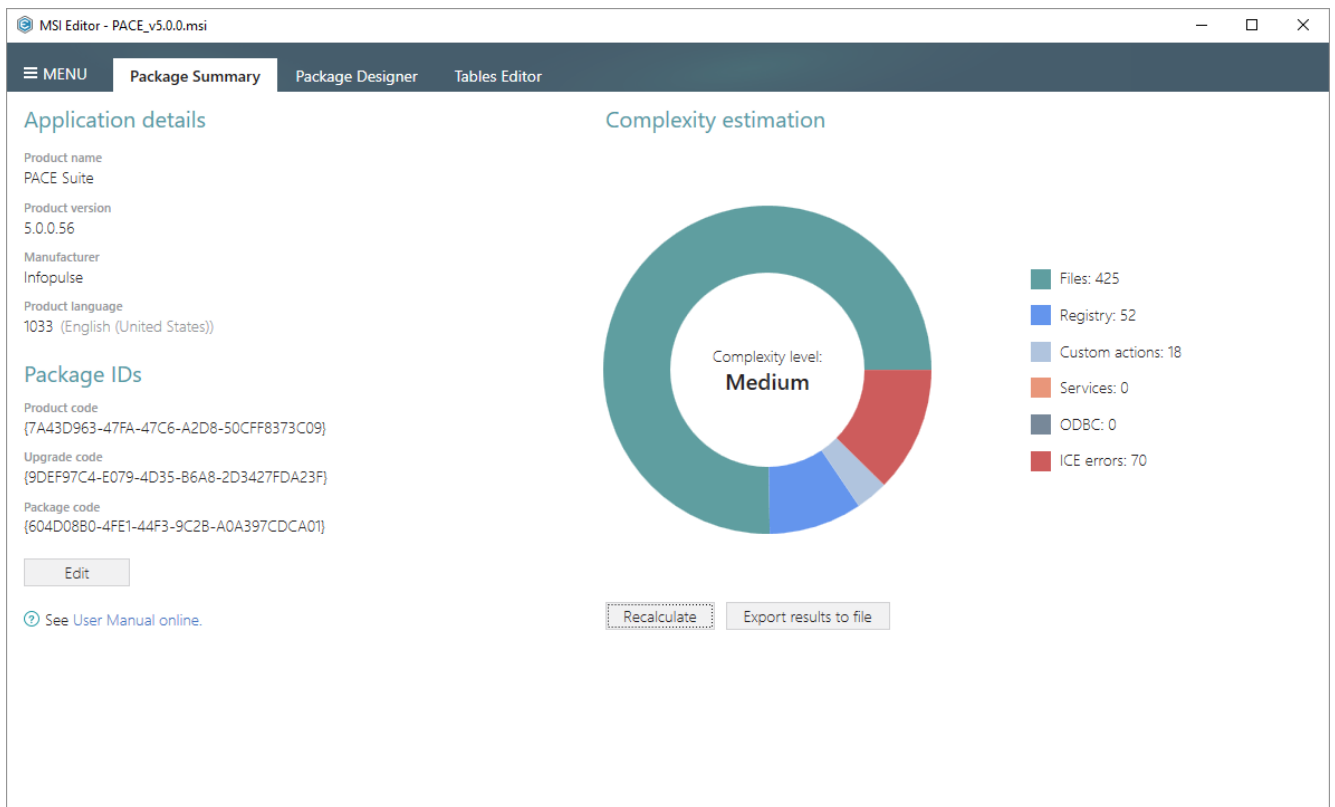
Control how the MSI package will be displayed in the **Apps & Features** list (also **Programs and Features** in the Control Panel).

In addition to selecting the ARP icon, 'Remove', 'Repair', and 'Modify' buttons, the latest version of MSI Editor allows managing support properties such as product, support URLs, contacts and others. Also, here you can change app details, which will be displayed in the app list.



## 2.2.6 New Package Summary Tab

The brand new and cleaner **Package Summary** tab displays the general information about the app inside your package, main package IDs such as product, upgrade and package codes, a beautiful complexity estimation chart, and the link to the help documentation. All the information you need in one place!





## 2.3 Other Improvements

### 2.3.1 Docu Generator

- Docu Generator does not require MS Office libraries to save your documents in Word formats (DOC, DOCX). You can now save manuals you created in Docu Generator as Word documents on an absolutely clean system.
- The built-in document template has been updated – make a copy of it and customize it according to your needs.

### 2.3.2 MSI Editor

- Stability of the CAB creation utility has been improved.
- The mechanism of Merge Module import has been improved.

### 2.3.3 MSI Generator

- Stability of the CAB creation utility has been improved.
- Stability and speed of the Capture Installation Wizard have been improved.
- Issues with parsing registry for UWP packages have been fixed.
- The quality of the generated MSI packages has been improved.





### 3 Release History

- [PACE Suite 5.0](#)
- [PACE Suite 4.7](#)
- [PACE Suite 4.6](#)
- [PACE Suite 4.5](#)
- [PACE Suite 4.4](#)
- [PACE Suite 4.3](#)
- [PACE Suite 4.2](#)
- [PACE Suite 4.1](#)
- [PACE Suite 4.0](#)
- [PACE Suite 3.5.5](#)
- [PACE Suite 3.5](#)
- [PACE Suite 3.4.2](#)
- [PACE Suite 3.4.1](#)
- [PACE Suite 3.4](#)
- [PACE Suite 3.3 – 3.3.1](#)

