



RELEASE NOTES

PACE Suite 4.6





Table of Contents

1	PACE Suite Overview	3
1.1	Key Advantages	3
1.2	PACE Components	3
1.3	System Requirements.....	4
1.4	Hardware Requirements.....	4
2	Release Notes	5
2.1	About This Release.....	5
2.2	New Files tab in MSI Editor	6
2.2.1	Tree list view for easier files and folders management.....	6
2.2.2	A quick way to find and fix errors.....	6
2.2.3	Unique Details pane for each type of resources.....	7
2.2.4	Redesigned permissions management.....	9
2.2.5	Updated "Add system folder" feature	9
2.2.6	"Move to folder" feature	10
2.2.7	"Set as INSTALLDIR" feature	11
2.2.8	New media settings for better performance.....	11
2.3	Other Improvements	14
2.3.1	MSI Editor.....	14
2.3.2	MSI Generator.....	14
3	Release History	15



1 PACE Suite Overview

PACE Suite is an advanced and fast software packaging tool with an intuitive user interface and set of features providing (re)packaging in Windows Installer, APPX and various virtualized formats.

1.1 Key Advantages

- Out-of-the-box application packaging solution
- Intelligible wizards for running complex user scenarios
- High performance when generating large packages
- Per-user license valid for any number of physical and virtual machines

1.2 PACE Components

PACE Suite consists of the following components:



MSI GENERATOR

- Repackage any existing installation into Windows Installer (MSI), UWP app package (APPX) or a virtualization format (Microsoft App-V 5.x, and VMware ThinApp).
- Auto-detection of embedded installers.
- Create a response transform
- Tune any existing Windows Installer package by applying your settings and saving them as a Windows Installer transform (MST).
- Include the excluded files/registry back to a package



MSI EDITOR

- Manage the contents of an MSI in a tree view
- Import the necessary resources
- Edit and manage Custom Actions and Device Drivers
- Integrate scripts into your package
- Use a smart and advanced MSI database editor, with formatted string autocompleting, Excel-like formula bar, row reference tracking, and more.
- Create patches (MSP)
- Manage permission settings for file system and registry
- Handle upgrades easily – just let MSI Editor know which MSI you want to be upgraded at runtime.
- Publish your applications to Microsoft SCCM.
- See the estimated complexity of an app right away.
- Generate package documentation containing the details about your package and configuration.
- Undo-redo any manipulation and see the changes highlighted in the MSI tables



DOCU GENERATOR

- Automatically record your on-screen actions into a nice-looking document with screenshots and annotations



1.3 System Requirements

Ensure that a target system contains necessary software prerequisites:

OS	Windows 10/8.1/8/7 SP1, Windows Server 2016/2012/2008 R2 SP1 NOTE Building Universal Windows Platform app packages (APPX) is available under Windows 10 or Windows Server 2016 or newer.
Middleware	Microsoft .NET Framework 4.6.1 (https://www.microsoft.com/en-us/download/details.aspx?id=49981) or higher. NOTE For building ThinApp packages, ensure that your system contains VMware ThinApp (5.0.0/5.0.1/5.1.0/5.1.1/5.2.0) installed. NOTE For publishing MSI packages to Microsoft SCCM 2007 (SP1/SP2/R1/R2) or SCCM 2012 (SP1/SP2/R2/R2 SP1) server, ensure that your system contains Microsoft Management Framework 3.0 and Windows Remote Management (WinRM) service enabled.
Privileges	Administrative privileges on the system.

1.4 Hardware Requirements

Ensure that a target system fulfils the minimum hardware conditions:

Processor	32-bit (x86) or 64-bit (x64) processor at 2 GHz or greater NOTE To repackage 64-bit applications or create 64-bit App-V packages, use PACE Suite on a 64-bit Windows operating system.
RAM	2 GB
Hard drive free space	1 GB NOTE Additional storage is required for your projects and packages and depends on their size and quantity.
Display	1280 x 768 resolution or higher.





2 Release Notes

2.1 About This Release

Meet **PACE Suite 4.6**, which introduces a completely new user interface for working with files in MSI Editor. Our new Files tab is not simply a redesign but a new approach to reviewing and managing files and folders, with complex tasks made easy even for newcomers to application packaging. You can now find rich details description for each type of resources, enjoy easy-to-spot highlights of all the modifications you make, and undo all of them too.

Another key feature we are launching in this release is media settings management. The essential part of our approach to Media is that MSI Editor will process all added files only once when you save your package. This allows us to boost the performance of saving packages even further.

As always, PACE Suite helps you to create error-free, high-quality packages. New Files tab now has a vast amount of validation rules and displays errors so you can fix them before building your package. Moreover, Remove feature on the Files tab now offers an even better level of purity when you remove a resource.

We have not forgotten about MSI Generator too. The INI file handling options are now similar to those in MSI Editor to offer you more holistic user experience.

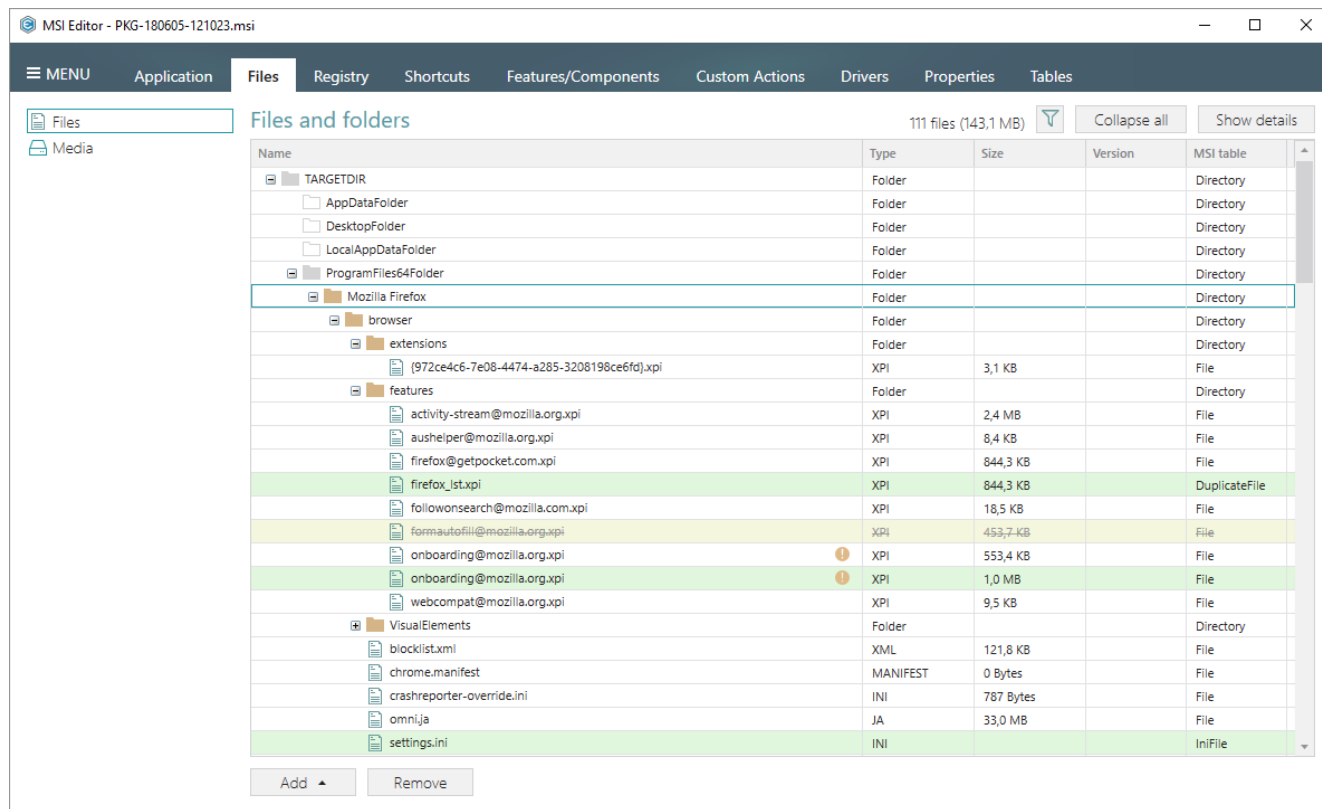
And we have only started - there are many more new improvements to working with files and folders in MSI Editor. Read on to learn about each new handy feature in more detail.



2.2 New Files tab in MSI Editor

2.2.1 Tree list view for easier files and folders management

Files tab now displays all files and folders in a tree list view that makes it easier to see all contents of all folders – just click **Expand all** to see everything that is in your package or click **Collapse all** to get back to a high-level overview.

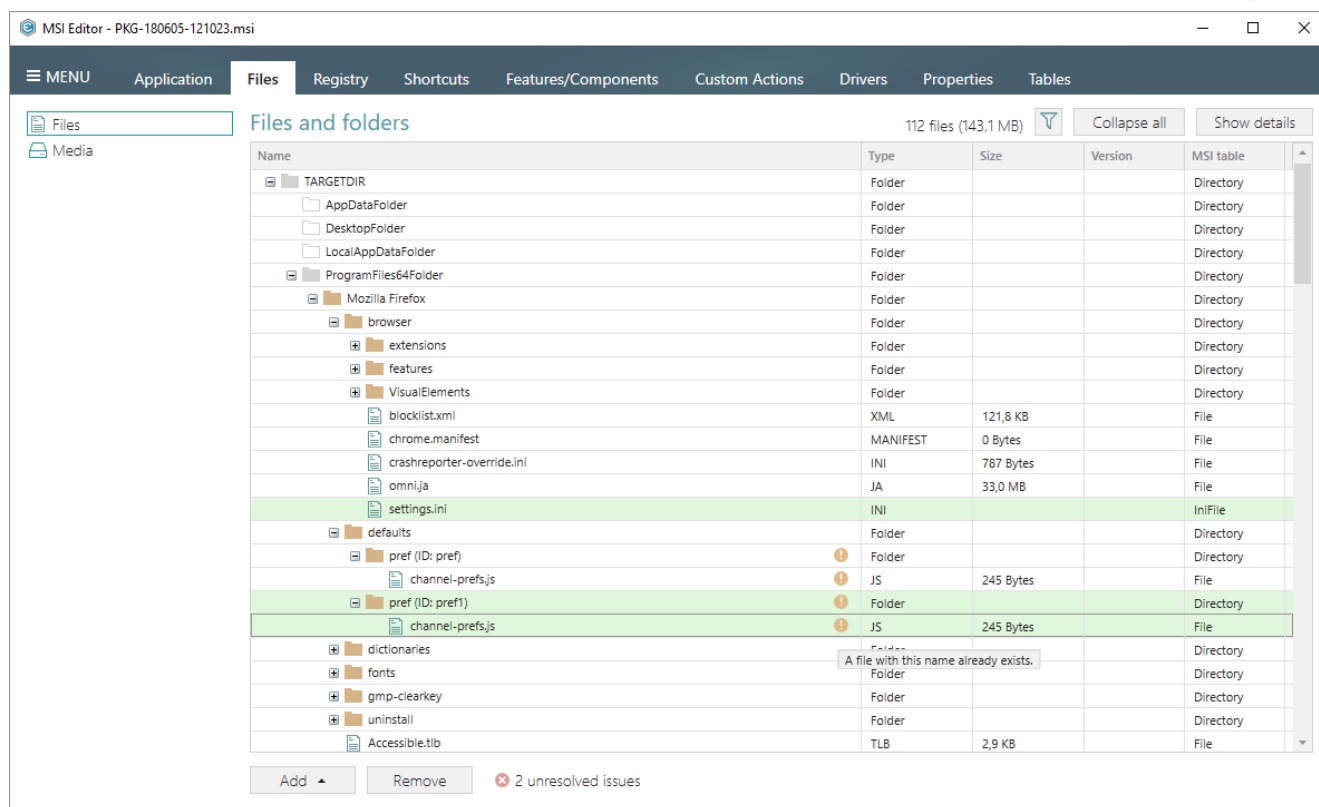


In the tree list, you can immediately see file's details such as type, size, versions and MSI table from which a resource has been read. All added, modified, or removed resources are highlighted with colors, and you can quickly undo any of those changes.

New Files tab also has filters that hide empty folders, removed resources and resources without permissions.

2.2.2 A quick way to find and fix errors

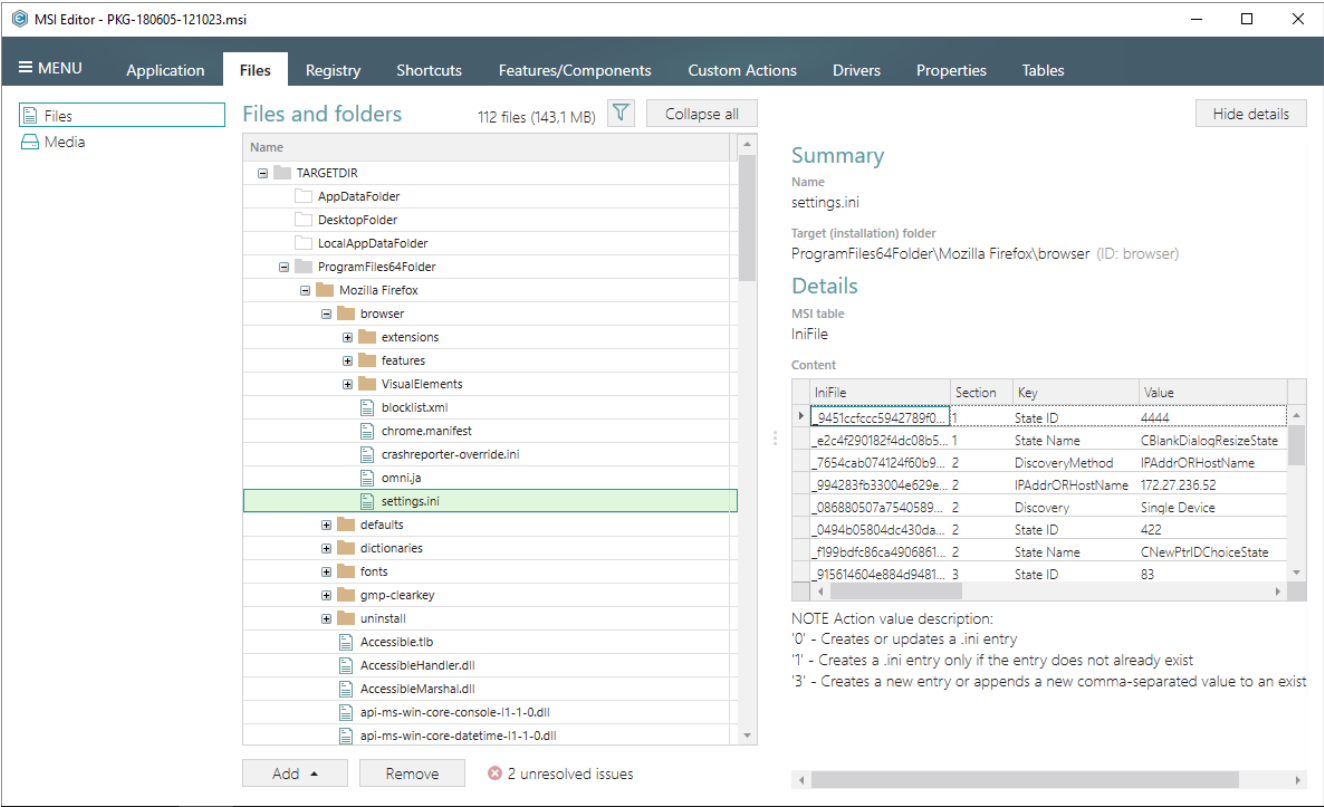
The tree list has a vast amount of validation rules so you can fix errors before testing or building your package. For instance, it checks if there are files with a similar name or similar target path, even if they are in different folders. Another example – the tree list shows resources with forbidden characters in a name.



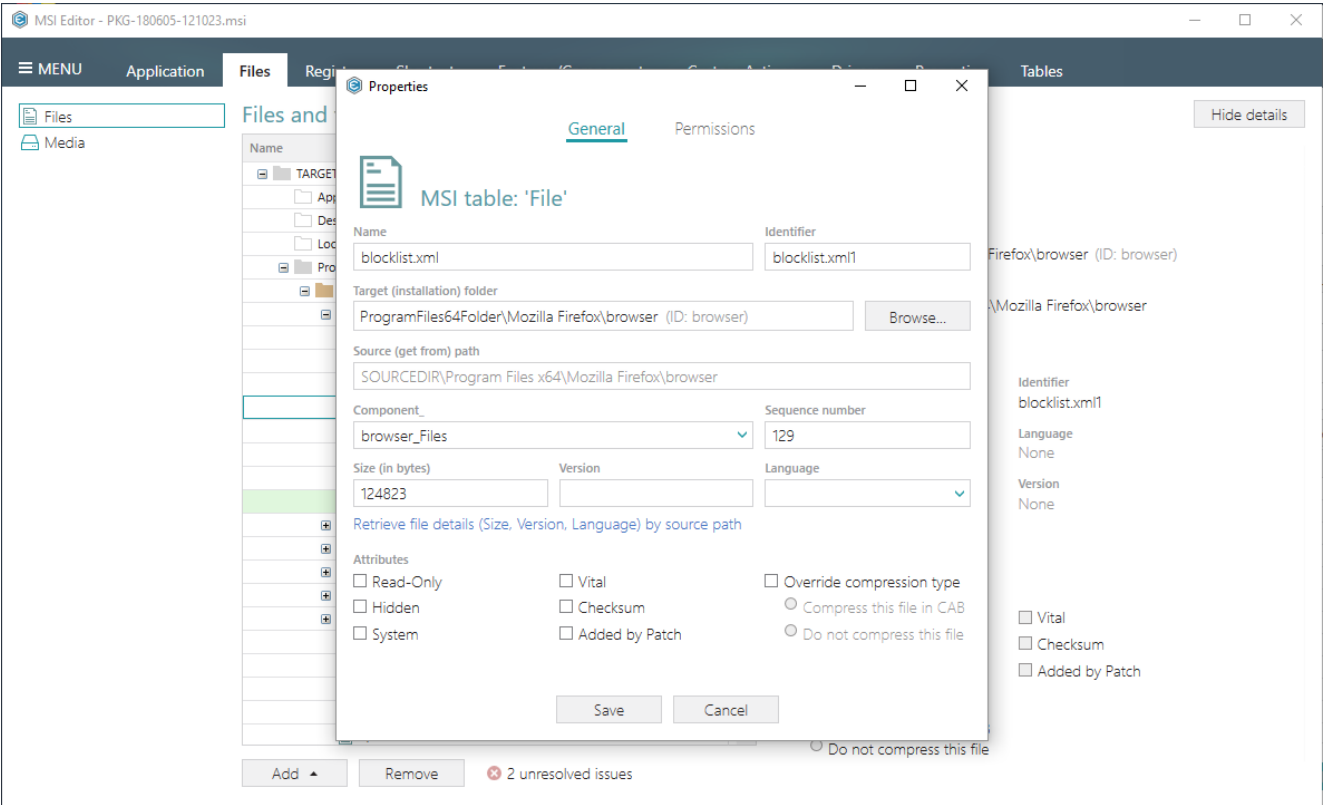
The number of validation errors is calculated and displayed in the status bar below the tree list so you will not miss any errors.

2.2.3 Unique Details pane for each type of resources

In MSI Editor, Files tab has four types of resources - folders, files, INI files, and duplicate files – for each of which it offers its own Details pane. The Details pane shows name, target and source paths, and other relevant details and attributes. For INI files, you can review their contents in their Details pane.



You can also edit all abovementioned details for each resource in their respective Property windows.

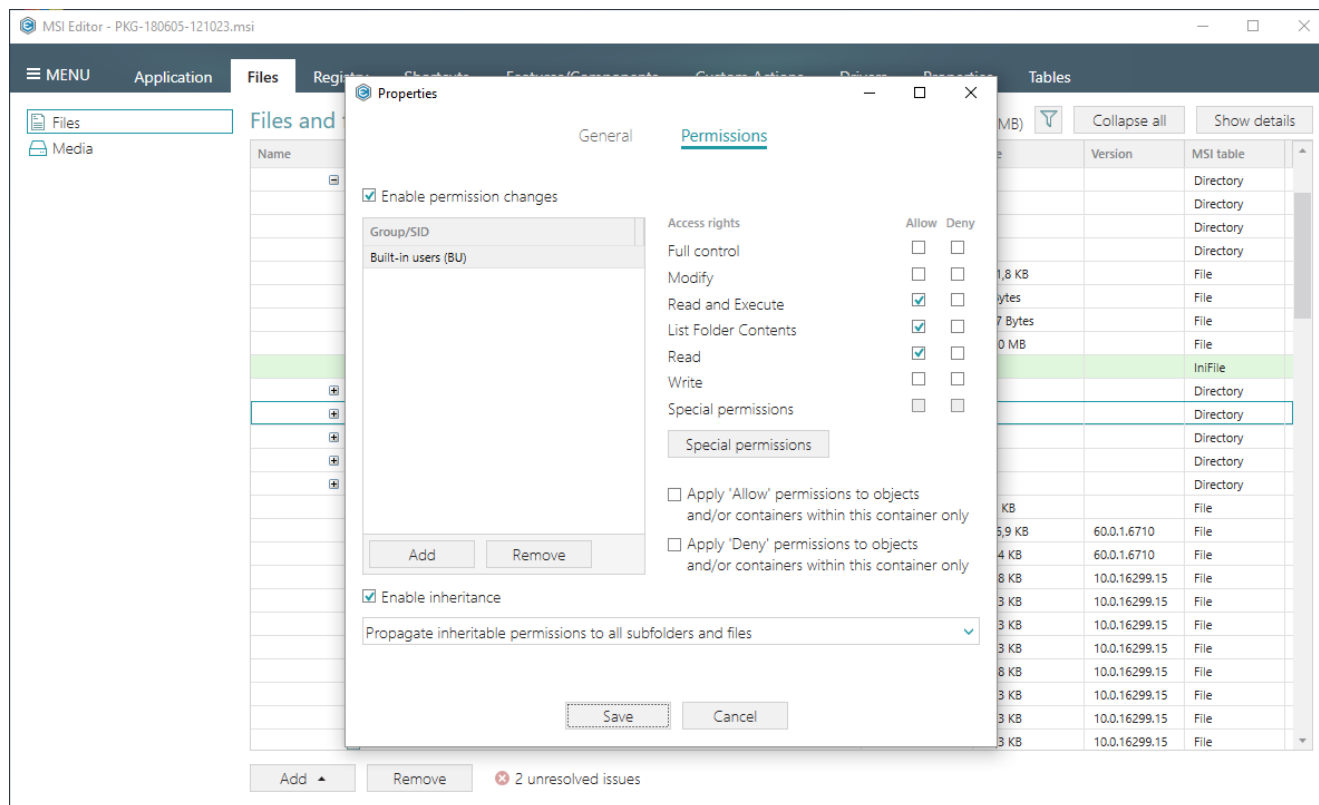


For instance, for files, you can change version, name, language, sequence number or even target installation folder and set files to be read-only. For INI files, you can also edit their content directly

in Property windows. For duplicate files, you can set custom name, source files that will be duplicated, target installation folder and other options. For folders, you can change target and source name and parent folder in the Property window.

2.2.4 Redesigned permissions management

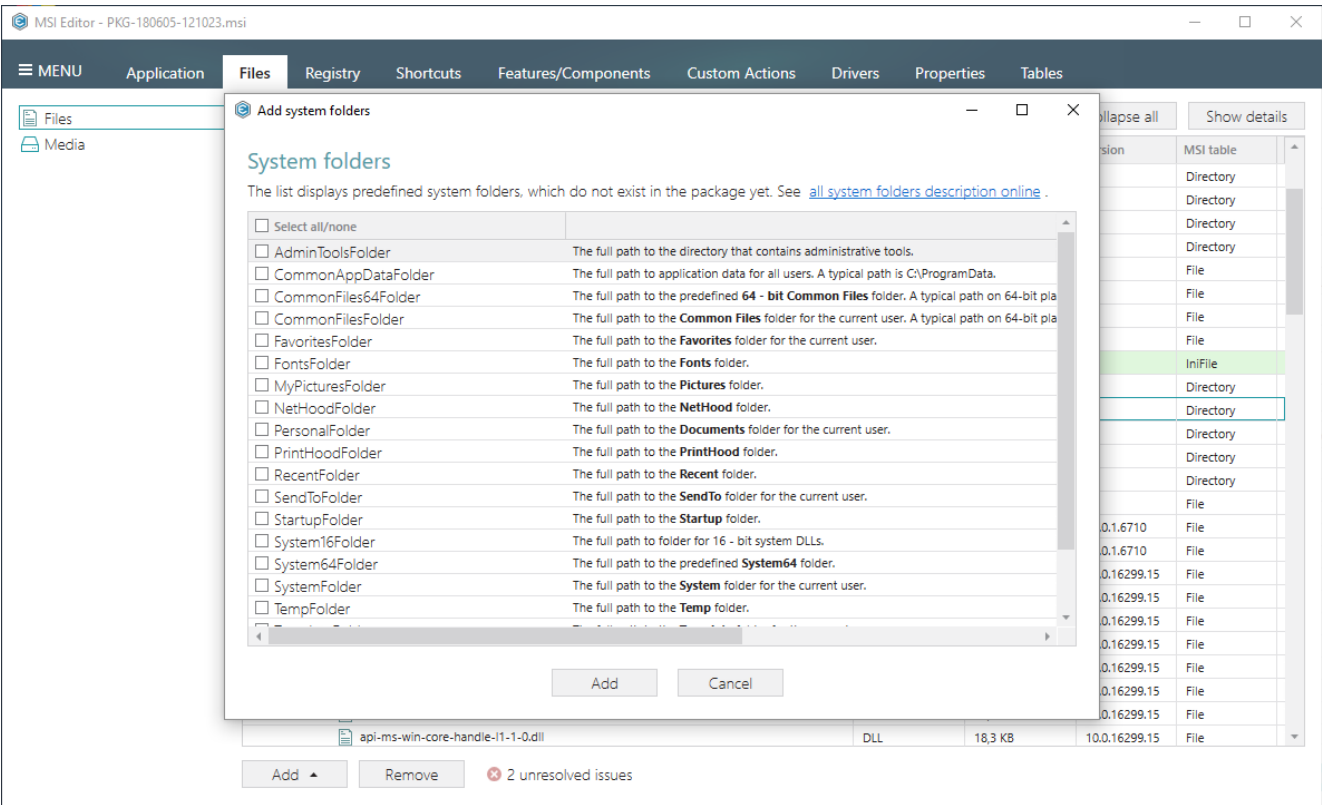
MSI Editor now has a new permission management property, and you can change permissions for each type of resources.



You can also quickly enable or disable permissions for any resource.

2.2.5 Updated "Add system folder" feature

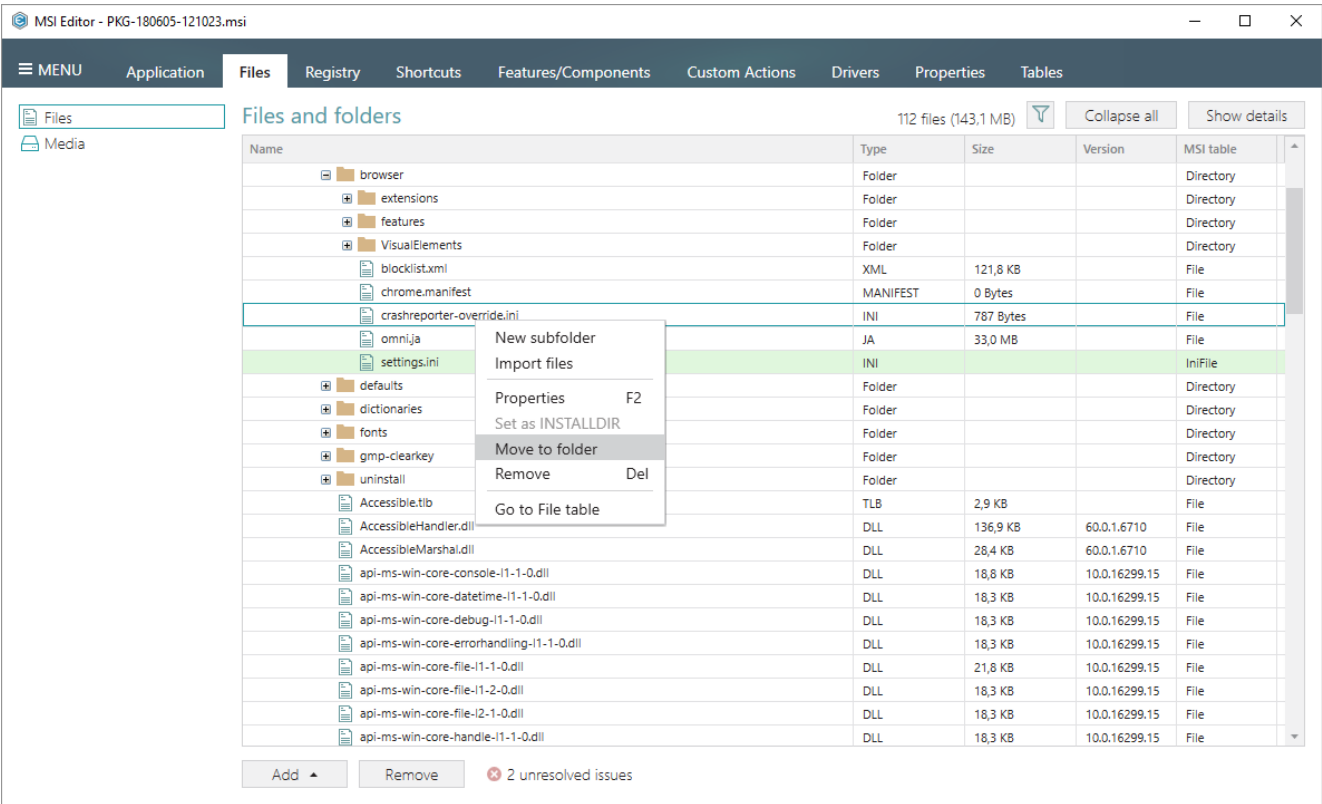
We have reviewed the list of system folders you can add to your packages to ensure you get all modern and relevant options.



You can also find descriptions for each standard folder.

2.2.6 "Move to folder" feature

Now, you can move any resource to a new place in just one click and without any leftovers.

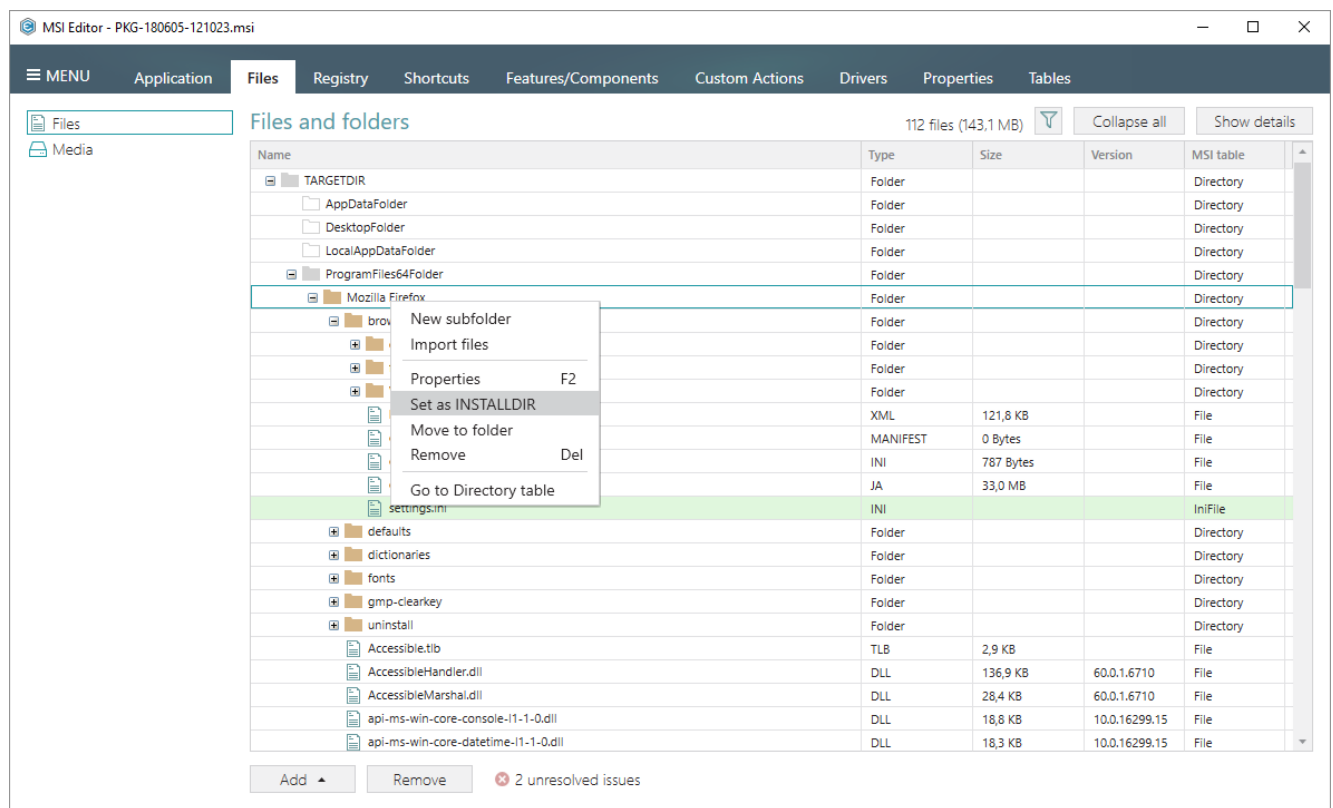


Moving has an advanced mechanism that does not leave empty components in your MSI. Easily

take one file from multi-file component and place it in a new location (and for this file a new component will be created according to the packaging best practices).

2.2.7 “Set as INSTALLDIR” feature

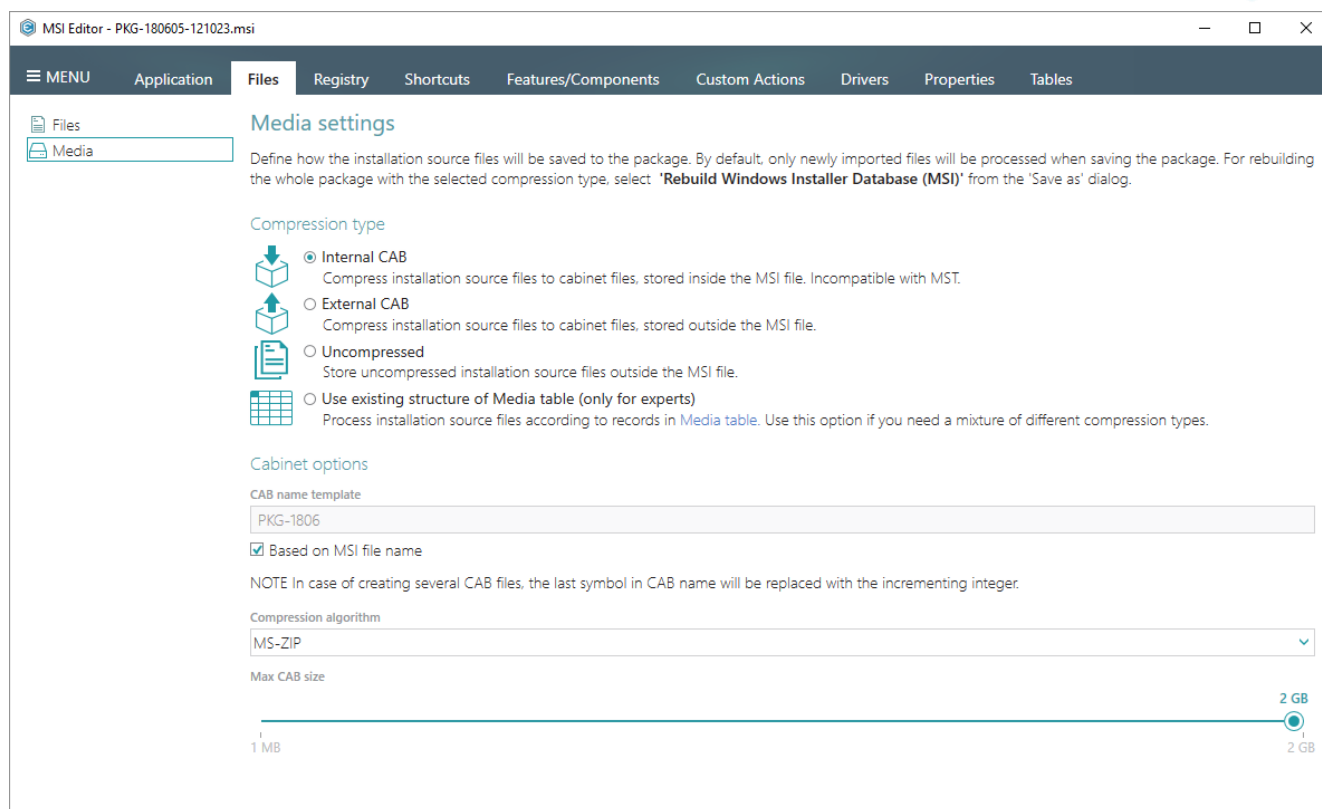
In the context menu, you will find a new feature Set as INSTALLDIR, which allows to make any folder INSTALLDIR.



Pretty obvious but pretty useful, isn't it?

2.2.8 New media settings for better performance

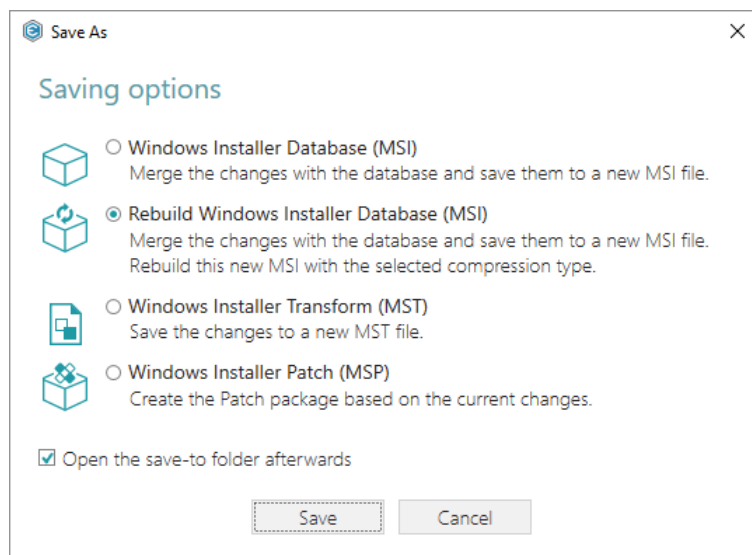
You may notice that we have removed media settings from Import Files and Add Driver Wizards because we have a new dedicated Media tab for them. New Media tab allows managing how files will be saved to the package.



MSI Editor will process all added files only once when you save your package. That allows you to choose or edit the necessary compression type after importing the files or at any convenient time. However, the best part is that saving packages in MSI Editor became faster and results in even cleaner packages because, for instance, all files will be placed into one CAB.

Experts can choose to mix different compression types in one package. That's possible because MSI Editor processes installation source files according to the entries in Media table.

Yet another useful feature this release brings is rebuilding your MSI with any supported compression type. For instance, you open a package with some files saved as CABs and others saved as Uncompressed; now, you can process them all using one compression type.



Here's another crowd pleaser: a considerable number of our clients have asked us to add a new compression type – Internal CAB (cabinet) – and we delivered.

Finally, one more area for customization you will appreciate. If you choose an External or Internal type, you can manage CAB options such as name template, compression algorithm, and maximum CAB size for splitting the files into several CABs.

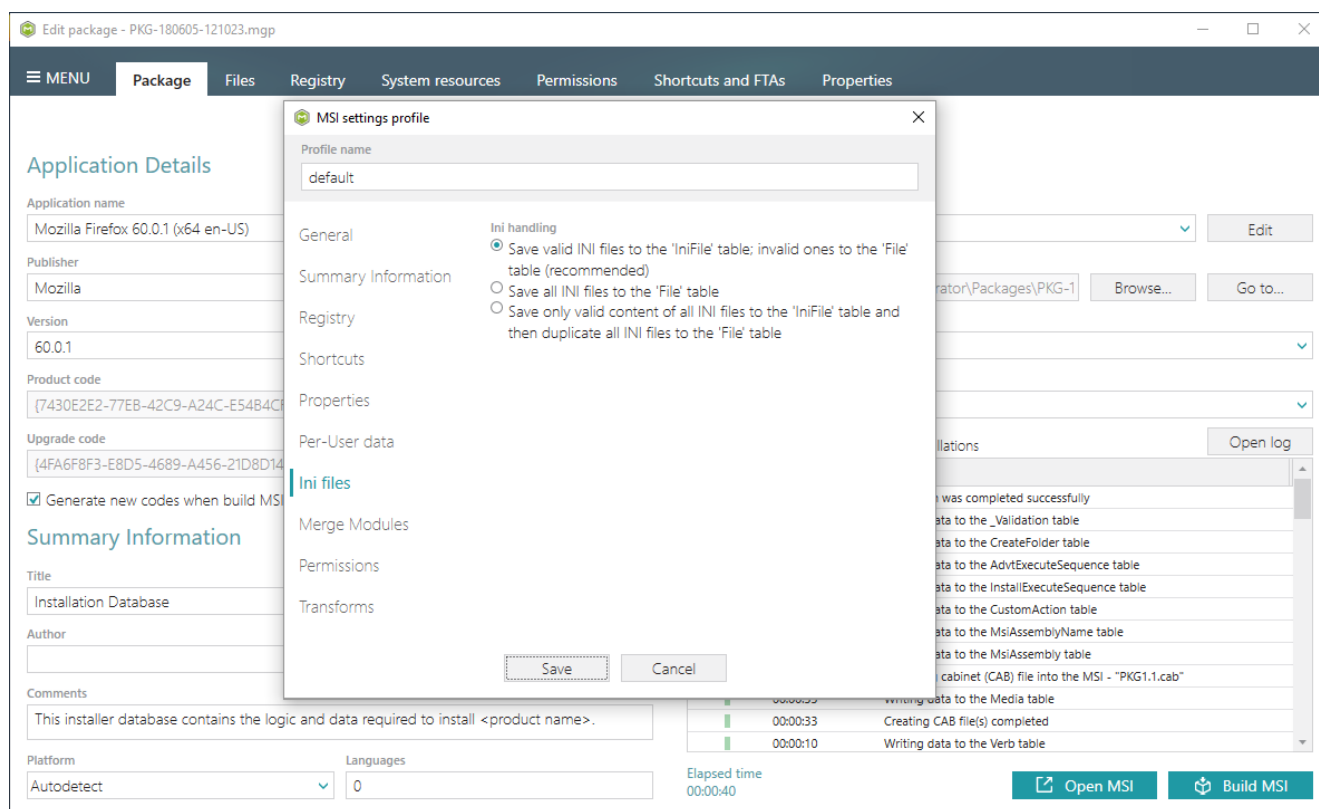
2.3 Other Improvements

2.3.1 MSI Editor

- We enhanced the mechanism behind the “Remove” feature in the Files tab to offer you top-level purity: if you remove a resource all referenced items will be removed too, without any leftovers in your package.
- We improved the appearance of the selected items in Trees, Lists, and Grids so you can see the highlighted errors and changes better.

2.3.2 MSI Generator

Moving to a unified user experience in PACE Suite applications, MSI Generator now lets you to choose INI file handling options just the way you used to do it in MSI Editor.



In other words, you can reference a table to which INI files will be saved directly from MSI Generator.



3 Release History

- [PACE Suite 4.5](#)
- [PACE Suite 4.4](#)
- [PACE Suite 4.3](#)
- [PACE Suite 4.2](#)
- [PACE Suite 4.1](#)
- [PACE Suite 4.0](#)
- [PACE Suite 3.5.5](#)
- [PACE Suite 3.5](#)
- [PACE Suite 3.4.2](#)
- [PACE Suite 3.4.1](#)
- [PACE Suite 3.4](#)
- [PACE Suite 3.3 – 3.3.1](#)

