

---

# RELEASE NOTES

---

PACE Suite 4.4





# Table of Contents

1	PACE Suite Overview .....	3
1.1	Key Advantages .....	3
1.2	PACE Components .....	3
1.3	System Requirements.....	4
1.4	Hardware Requirements.....	4
2	Release Notes .....	5
2.1	About This Release.....	5
2.2	Important Highlights.....	6
2.2.1	Universal Windows Platform App (APPX) Packages .....	6
2.2.2	New Installation Capturing Wizard .....	7
2.2.3	Enhanced usability of the Tables Tab in Our Package Editor.....	9
2.2.4	Redesigned Undo/Redo History.....	9
2.3	Fixed Bugs .....	10
2.3.1	MSI Generator.....	10
2.3.2	MSI Editor.....	10
2.4	Known Issues and Limitations .....	10
3	Release History.....	11





# 1 PACE Suite Overview

PACE Suite is an advanced and fast software packaging tool with intuitive user interface and set of features providing (re)packaging in Windows Installer, APPX and various virtualization formats.

## 1.1 Key Advantages

- Out-of-the-box application packaging solution
- Intelligible wizards for running complex user scenarios
- High performance when generating large packages
- Per-user license valid for any number of physical and virtual machines

## 1.2 PACE Components

PACE Suite consists of the following components:



### MSI GENERATOR

- Repackage any existing installation into Windows Installer (MSI), UWP app package (APPX) or a virtualization format (Microsoft App-V 5.x, and VMware ThinApp).
- Auto-detection of embedded installers.
- Create a response transform
- Tune any existing Windows Installer package by applying your settings and saving them as a Windows Installer transform (MST).
- Include the excluded files/registry back to a package



### MSI EDITOR

- Manage the contents of an MSI in a tree view
- Import the desired resources
- Edit and manage Custom Actions
- Integrate scripts into your package
- Use a smart and advanced MSI database editor, with formatted string auto-completing, Excel-like formula bar, row reference tracking, and more.
- Create patches (MSP)
- Manage permission settings for file system and registry
- Handle upgrades easily – just let MSI Editor know which MSI you want to be upgraded at runtime.
- Publish your applications to Microsoft SCCM 2007, 2012, 2016.
- See the estimated complexity of an app right away.
- Generate package documentation containing the details about your package and configuration.
- Undo-redo any manipulation and see the changes highlighted in the MSI tables



### DOCU GENERATOR

- Automatically record your on-screen actions into a nice-looking document with screenshots and annotations





### 1.3 System Requirements

Ensure that a target system contains necessary software prerequisites:

OS	<p>Windows 10/8.1/8/7 SP1, Windows Server 2012/2008 R2 SP1</p> <p><b>NOTE</b> Building Universal Windows Platform app packages (APPX) is available under Windows 10 or Windows Server 2016 or newer.</p>
Middleware	<p>Microsoft .NET Framework 4.6.1 (<a href="https://www.microsoft.com/en-us/download/details.aspx?id=49981">https://www.microsoft.com/en-us/download/details.aspx?id=49981</a>) or higher.</p> <p><b>NOTE</b> For building ThinApp packages, ensure that your system contains VMware ThinApp (5.0.0/5.0.1/5.1.0/5.1.1/5.2.0) installed.</p> <p><b>NOTE</b> For publishing MSI packages to Microsoft SCCM 2007 (SP1/SP2/R1/R2) or SCCM 2012 (SP1/SP2/R2/R2 SP1) server, ensure that your system contains Microsoft Management Framework 3.0 and Windows Remote Management (WinRM) service enabled.</p>
Privileges	Administrative privileges on the system.

### 1.4 Hardware Requirements

Ensure that a target system fulfils the minimum hardware conditions:

Processor	<p>32-bit (x86) or 64-bit (x64) processor at 2 GHz or greater</p> <p><b>NOTE</b> To repackage 64-bit applications or create 64-bit App-V packages, use PACE Suite on a 64-bit Windows operating system.</p>
RAM	2 GB
Hard drive free space	<p>1 GB</p> <p><b>NOTE</b> Additional storage is required for your projects and packages and depends on their size and quantity.</p>
Display	1280 x 768 resolution or higher.





## 2 Release Notes

### 2.1 About This Release

Please welcome **PACE Suite 4.4** – a major release that introduces a number of innovations that ensure our approach, while remaining the best-in-class professional way to create and edit packages, continuously makes application packaging easier.

First, we are happy to announce that PACE Suite now supports the creation of Universal Windows Platform app packages (APPX). UWP app packages are the future of application packaging for Windows 10, and, as more businesses move to Windows 10, we are committed to enabling our users to use the most advanced application format. Most importantly, PACE Suite offers the fast and hassle-free creation of APPX packages.

Another huge improvement that we introduced in this release is our unique Installation Capturing Wizard. We leveraged our extensive knowledge of application packaging and created this Wizard to make packaging so much easier – even for the most novice users.

Naturally, there is more. We completely redesigned our Undo/Redo mechanism and significantly improved management of MSI tables. You can find the detailed descriptions of all the new features below. Finally, as usual, reported by our customers and internally detected nasty bugs were politely asked to leave the product.



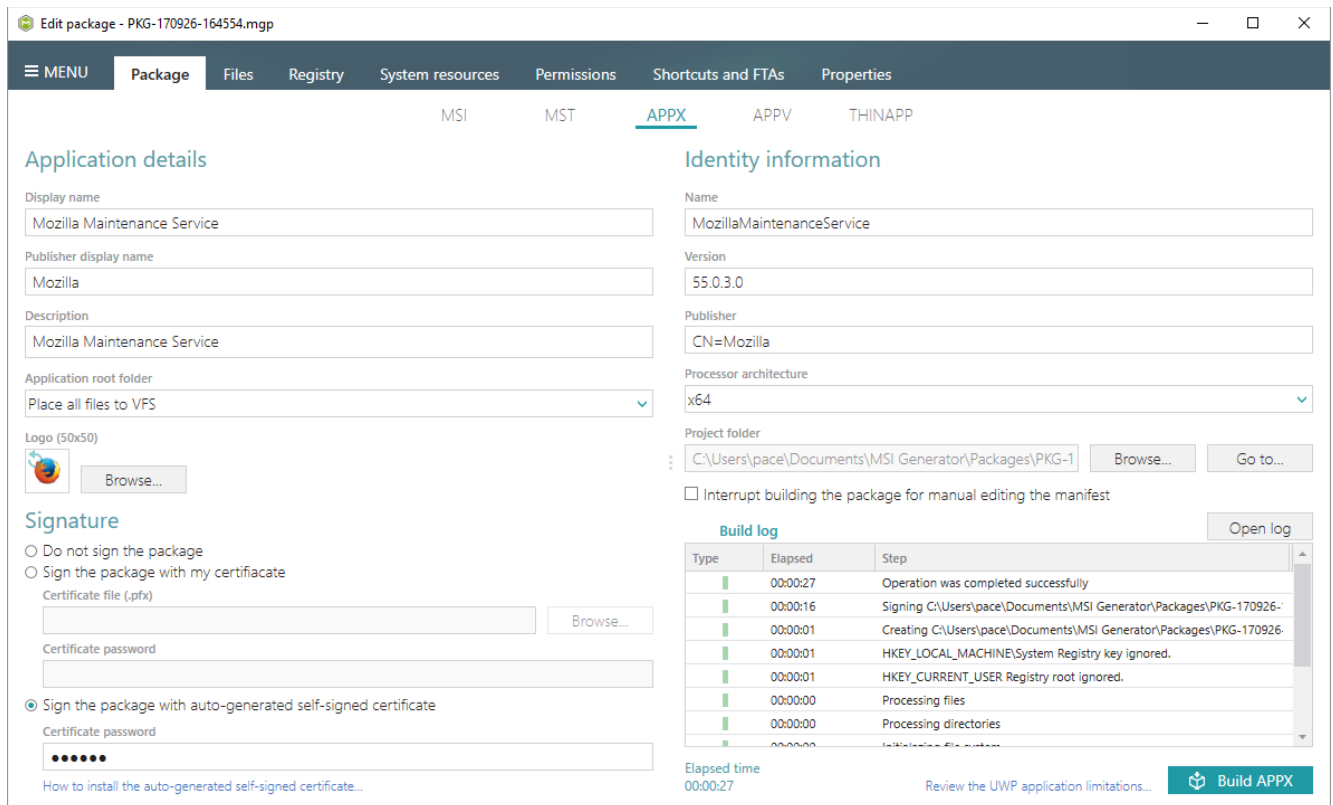
## 2.2 Important Highlights

### 2.2.1 Universal Windows Platform App (APPX) Packages

Universal Windows Platform (UWP) format is getting increasingly important for modern application packaging, and PACE Suite now supports the creation of UWP app packages.

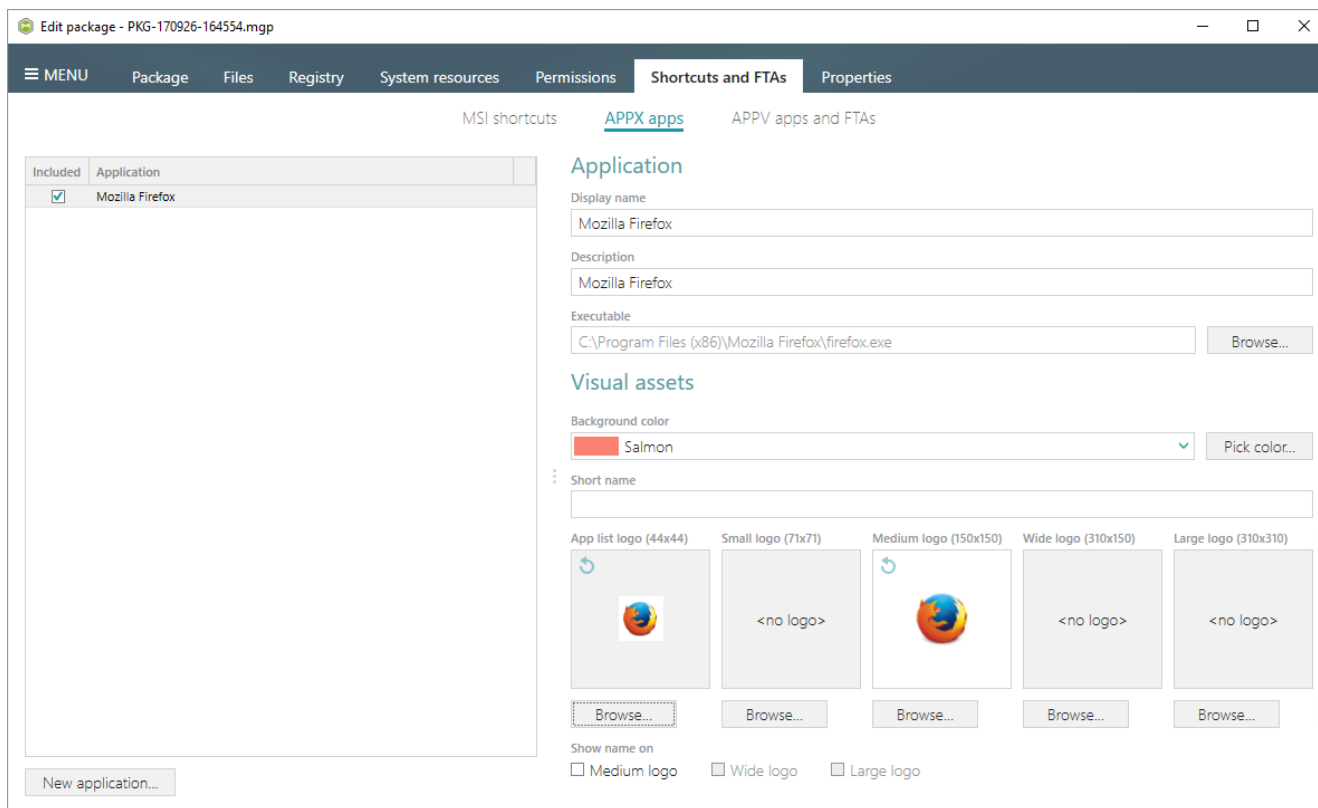
Our core intention was to make the creation of APPX packages as easy as possible, and by using **PACE Suite 4.4** you can bring your desktop apps to the Universal Windows Platform (UWP) in just a few mouse clicks. The most important innovation that we bring to the creation of UWP app packages is that there is no need to deep-dive into the details of the APPX technology, install Windows SDK components, and prepare peculiar environments to start packaging in this new format. **PACE Suite 4.4** is able to build APPX packages independently in your usual packaging environment under Windows 10 or Windows Server 2016 or newer.

**PACE Suite 4.4** allows you to manage all the application details and sign your APPX package (if necessary) in our familiar user-friendly interface. For your convenience, we added an option to select the application root folder (a folder, which contents are placed into the package root). You can also choose to interrupt building your package so you can edit the manifest file manually. Moreover, as UWP format has a number of limitations, you can review them right in PACE Suite before creating your package.





Along with other APPX package settings, you can customize app visual assets such as logos, background color and others.



### 2.2.2 New Installation Capturing Wizard

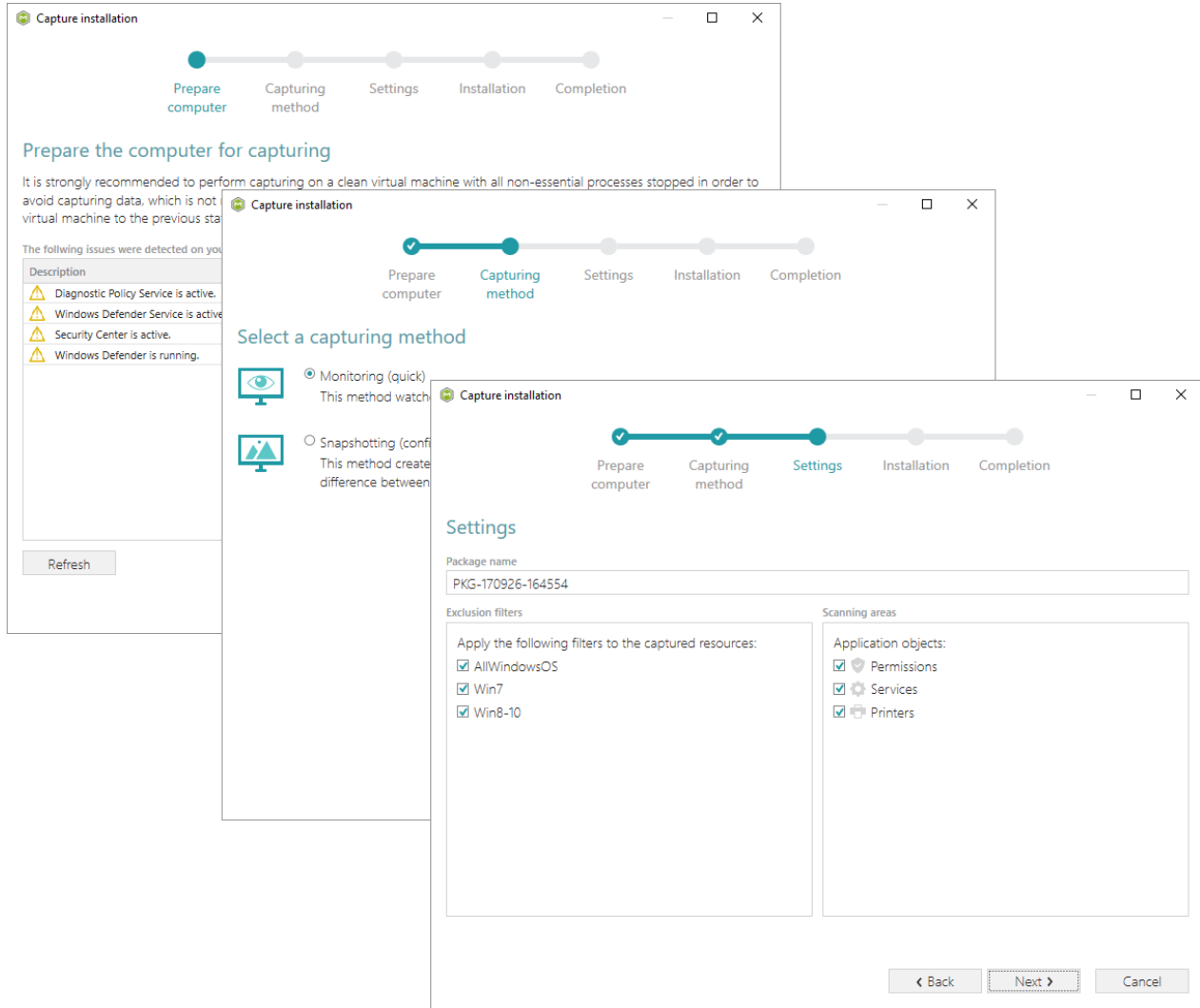
We are dedicated to ensuring PACE Suite is the easiest application tool at any given moment. That is why we are continuously enhancing our wizards to guide even novice users to the successful creation of high-quality packages. With this release, we completely redefined our Installation Capturing Wizard.

Our unique Installation Capturing Wizard walks the user through each step of creating a package. In fact, the Wizard begins with helping you optimize your packaging environment. The purity and reliability of the created packages depend on the properly configured packaging environment. If you do not have a clue of how to configure it, do not worry. PACE Suite will inspect your environment and show you which of processes and services should be stopped.

What is more important, if your source installation requires a system restart the Wizard will successfully capture such an application. New Wizard’s mechanism of automatic restore simply continues from the ‘Installation’ step.



Finally, Installation Capturing Wizard allows you to copy all the captured resources to the project folder right after the installation is completed. Therefore, you can seamlessly transfer your captured project with all the source files between different packaging environments or simply copy the project folder to your system to continue editing in comfortable conditions. For instance, this enables you to include previously excluded resources even if you are working in a completely new packaging environment.

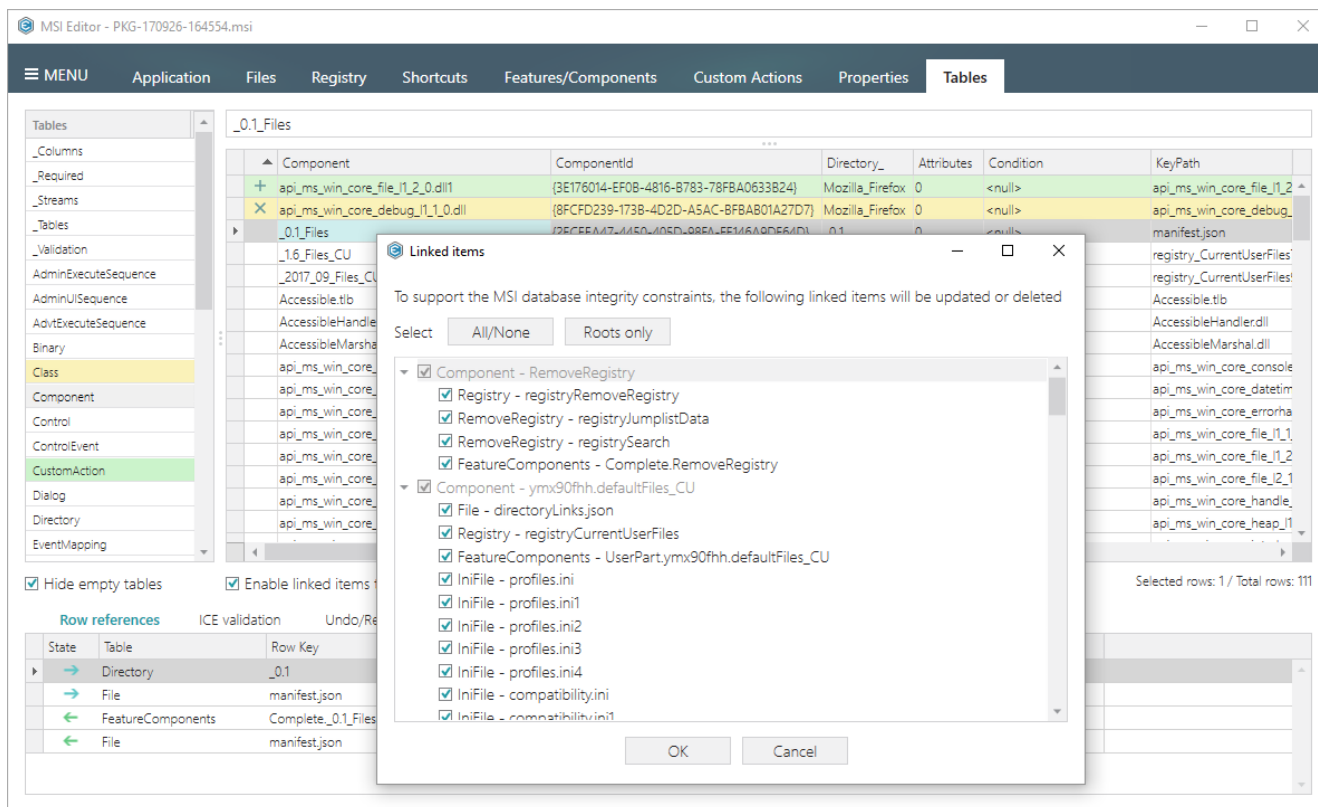




### 2.2.3 Enhanced usability of the Tables Tab in Our Package Editor

Those who work with MSI tables a lot will appreciate our new enhancements of the 'Tables' tab of MSI Editor.

Visual improvements include better highlighting for the selected elements and auto-adjusted columns widths. From the functionality standpoint, you can now see the removed tables with their initial content, reuse identifiers of the removed rows, review and handle elements with their references to other tables during the dropping non-empty MSI tables, and others.



### 2.2.4 Redesigned Undo/Redo History

The Undo/Redo mechanism of MSI Editor was completely redesigned to secure maximum stability in different complex conditions. With PACE Suite 4.4, you need not be afraid to experiment with your package, because almost all MSI database changes could be reverted to the previous or initial state (some operations are still irreversible due to their peculiarity; these operations are: Apply MST to MSI..., Active scripting..., Compare packages..., Import merge modules.....).



## 2.3 Fixed Bugs

### 2.3.1 MSI Generator

- Crash on capturing with the “enumeration operation may not execute” message.
- Error while parsing the log file.

### 2.3.2 MSI Editor

- Crash on modifying the ‘Name’ column of the ‘Icon’ and ‘Binary’ tables.

## 2.4 Known Issues and Limitations

- MSI Editor: Opening big Windows Installer packages (500MB in size and more or 50K rows in a table) may take a long time.
- PACE Suite: If you are installing PACE Suite on a system, where Raynet RayPack was installed, please remove the `%localappdata%\MSI Generator` folder manually before launching MSI Generator. Raynet RayPack keeps its conflicting setting in that folder.





## 3 Release History

- [PACE Suite 4.3](#)
- [PACE Suite 4.2](#)
- [PACE Suite 4.1](#)
- [PACE Suite 4.0](#)
- [PACE Suite 3.5.5](#)
- [PACE Suite 3.5](#)
- [PACE Suite 3.4.2](#)
- [PACE Suite 3.4.1](#)
- [PACE Suite 3.4](#)
- [PACE Suite 3.3 – 3.3.1](#)

