



PACE Suite

Release Notes

Version 4.1
September 29, 2016



Table of Contents

- 1 PACE SUITE 4.1..... 3
 - 1.1 Release summary 3
 - 1.2 New features 3
 - 1.2.1 New Modern User Interface (UI) 3
 - 1.3 Improvements 6
 - 1.3.1 Added support of virtual fonts subsystem for App-V 6
 - 1.4 Fixed bugs 6

- 2 KNOWN ISSUES 7

- 3 ARCHIVE OF RELEASE NOTES..... 8

PACE Overview

PACE Suite is a software solution designed by Infopulse for application packaging engineers. The solution provides a complete feature set required for re-packaging and creating custom application packages with the use of various technologies and formats.

PACE Suite was inspired by the packagers and designed for the packagers. Infopulse initiated development of packaging software back in 2008 in response to the in-house needs, and later, in 2012, we brought the solution to the market.

PACE Suite consists of the three components:

- **MSI Generator** enables capturing legacy setup of any format into a project with application of the corporate packaging standards. It generates customized packages of various formats – App-V 5.x, MSI, MST and ThinApp.
- **MSI Editor** provides a tool for editing Windows Installer packages. It is suitable for both advanced users and newbies as it combines an intuitive UI and the advanced editing capabilities.
- **Docu Generator** is a handy tool which allows creating screenshot-based instructions for the created package.

1 PACE Suite 4.1

1.1 Release summary

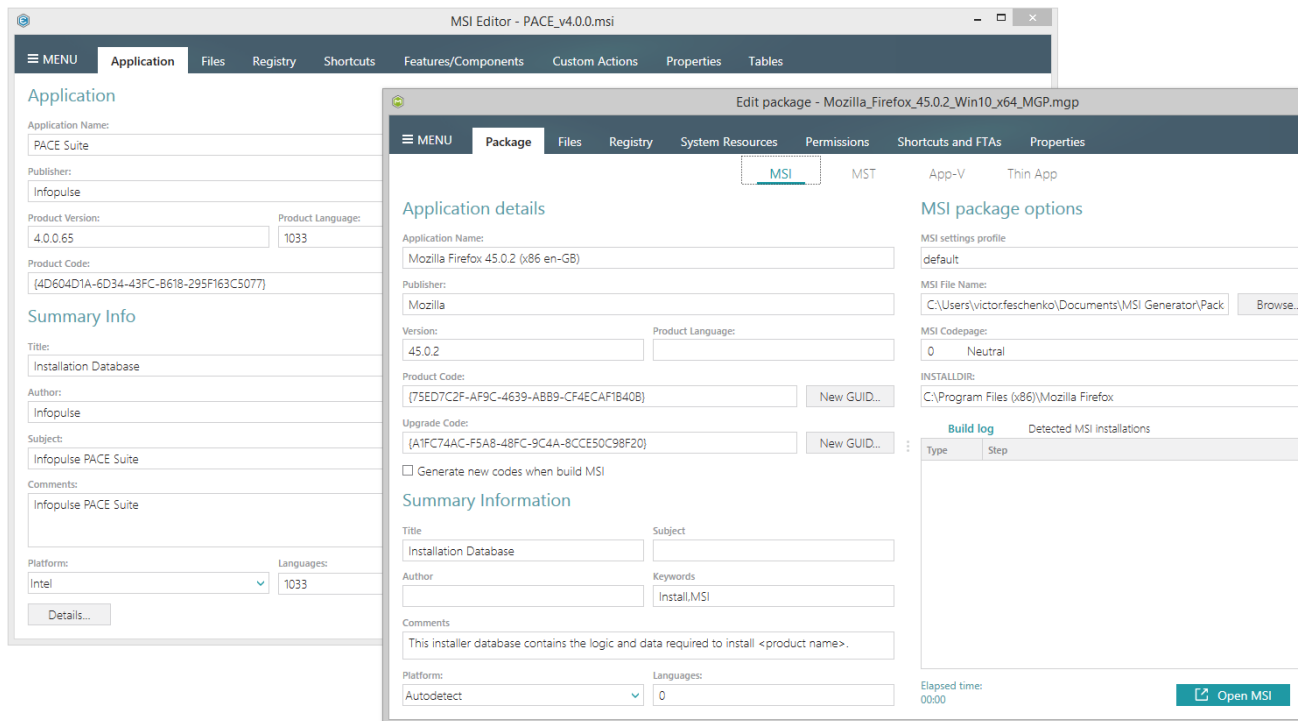
Next to bringing full support of Microsoft App-V 5.1 technology in PACE Suite 4.0, the new release 4.1 presents a brand new user interface for improving the usability of product.

1.2 New features

1.2.1 New Modern User Interface (UI)

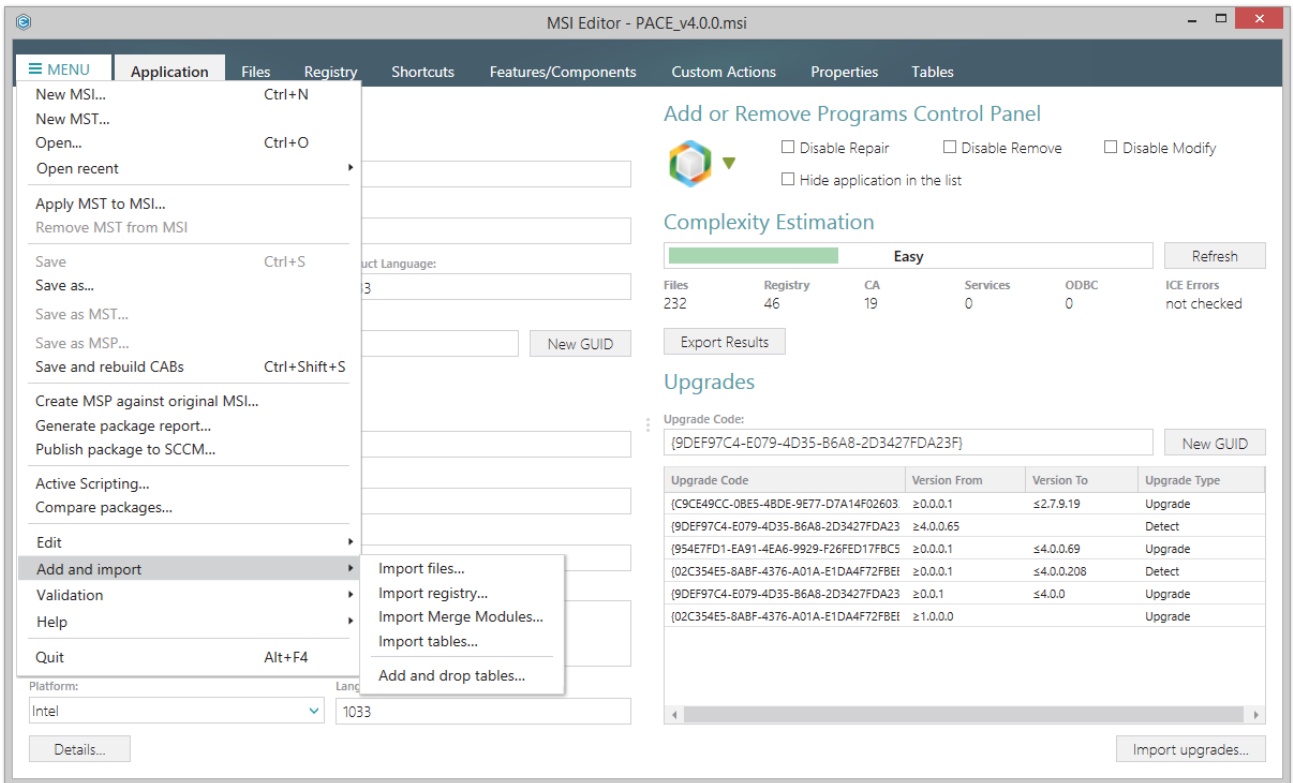
Unified UI styles for the enhanced usability

Just focus on the work results instead of focusing on the tool. Enjoy the enhanced usability provided by the unified styles for action buttons, menus, fields, captions, panes and other controls. The new version presents all 150 screens of the PACE Suite components in a common harmonic look.



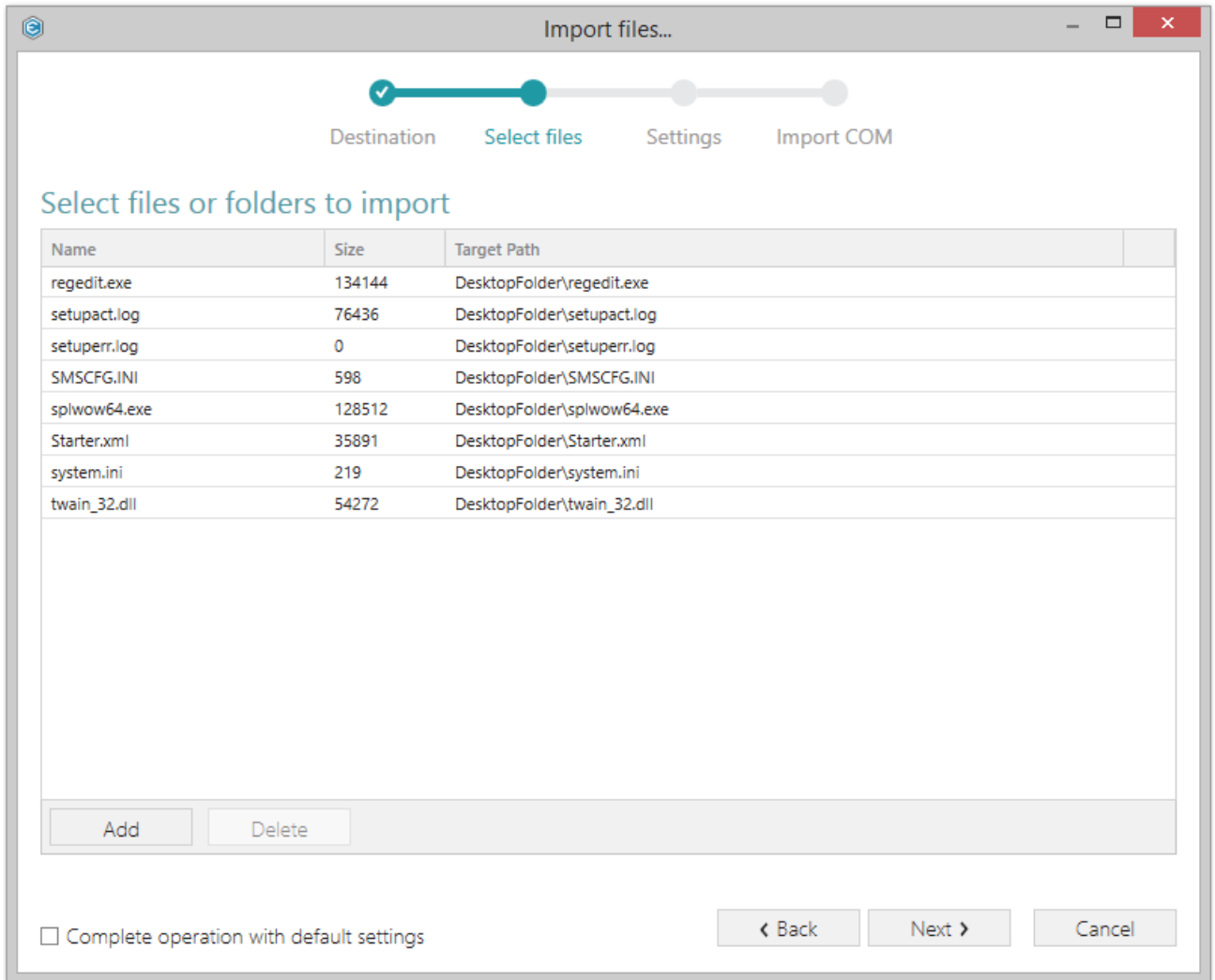
Find the available functions in a single structured menu

The new style of menu secures finding all available functions, optimizes the use of Windows screens and user's efforts.



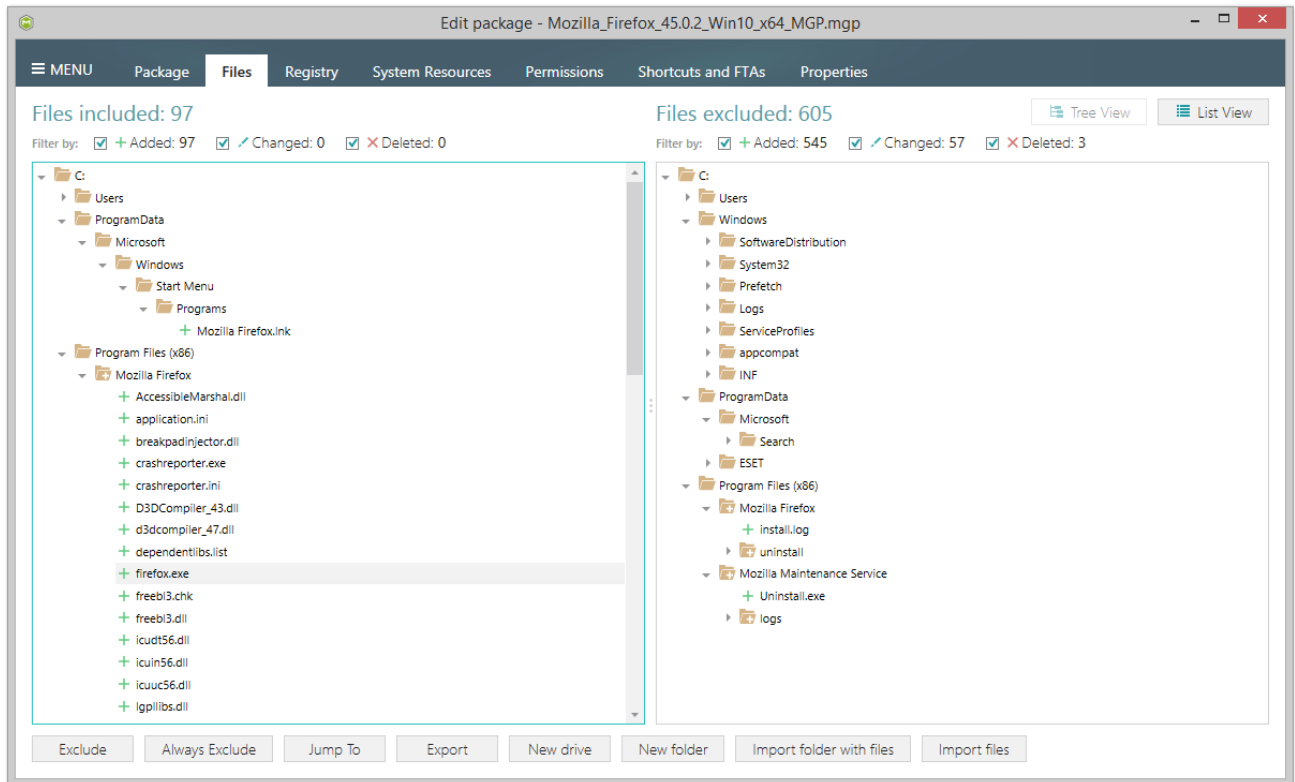
New intelligible wizards for running complex scenarios

Say goodbye to ugly old style wizards and narrow tables overwhelmed with data. The new perspicuous wizard design serves for simplification of displaying big amount of data and various options.



Discover new way of managing package resources

Working with files and registry is a complex task performed with the use of both MSI Generator and MSI Editor. The new responsive tree and list views serve for working with a larger amount of resources with the same window size.



(Screenshot of MSI Generator's Files tab)

1.3 Improvements

1.3.1 Added support of virtual fonts subsystem for App-V

MSI Generator secures including captured Fonts to a virtual Microsoft App-V 5.1 package. The font information is stored as an extension (AppV.Fonts) of the manifest file.

1.4 Fixed bugs

- Crashes at the snapshot comparison phase of the capturing process in MSI Generator
- Crash on importing files to an empty package in MSI Editor
- Issues with proper displaying values of the 'Last saved by', 'Created' and 'Saved' properties of the Summary Information stream in MSI Editor
- Problem with specifying new custom location of ThinApp install in MSI Generator
- Bug related to creation of a new registry key in MSI Editor
- Incorrect behavior of MSI Generator on saving per-user data to an App-V package in case it was captured by another user

- Problem with losing Application Name and Publisher properties during the capturing applications
- UI issue on refreshing the Features-Components tree after adding a new MSI feature in MSI Editor

2 Known issues

MSI Editor: Undoing a large number of actions at once can cause unwanted results. Please apply UNDO in a sequence.

MSI Editor: Opening big Windows Installer packages (500MB in size and more or 50K rows in a table) may take long time.

3 Archive of Release Notes

- [PACE Suite 4.0](#)
- [PACE Suite 3.5.5](#)
- [PACE Suite 3.5](#)
- [PACE Suite 3.4.2](#)
- [PACE Suite 3.4.1](#)
- [PACE Suite 3.4](#)
- [PACE Suite 3.3 – 3.3.1](#)